



# Stormwater Management Program (SWMP)

Town of Medway



EPA NPDES Permit Number # MAR0411132

June 28, 2019

Revised June 24, 2020

Revised June 8, 2021

Revised June 27, 2022

Updated June 29, 2023

## Table of Contents

Introduction .....	3
1.1 History of the Stormwater Regulations and Requirements.....	4
1.2 Eligibility Requirements .....	4
1.2.1 Special Eligibility Requirements .....	4
1.3 Impaired Waters in Medway .....	6
1.4 Small MS4 Authorization .....	8
1.5 Permit Year Definitions .....	8
MCM 1 Public Education and Outreach .....	10
MCM 2: Public Involvement and Participation .....	14
MCM 3 Illicit Discharge Detection and Elimination (IDDE) Program .....	16
MCM 4 Construction Site Stormwater Runoff Control .....	18
MCM 5 Post Construction Stormwater Management in New Development and Redevelopment .....	20
MCM 6 Good Housekeeping and Pollution Prevention for Permittee Owned Operations .....	22
Charles River Watershed Phosphorus TMDL Requirements .....	24
Bacteria and Pathogen TMDL Requirements.....	28
Stormwater Management Program – Certification .....	29
Appendix A - Town of Medway MS4 Permit Coverage .....	30
Appendix B – Administratively Continued Permit Coverage .....	32
Appendix C – Notice of Intent.....	33

## Introduction

The Town of Medway (Town and Permittee ) has developed a Stormwater Management Plan (SWMP) as the guiding document to describe the activities and measures the Town will take in order to minimize the impacts of stormwater runoff into local waters. This document is a requirement under the United States Environmental Protection Agency's (EPA) 2016 National Pollutant Discharge Elimination System (NPDES) General Permit for stormwater discharges from Small Municipal Separate Storm Sewer Systems (MS4) in Massachusetts.

The six main elements of the stormwater management program are:

**Public Education and Outreach** - in order to affect public behavior causing stormwater pollution

**Public Involvement and Participation** - an opportunity for the public to participate and provide comments on the stormwater program

**Illicit Discharge Detection and Elimination (IDDE) Program** - a program to effectively find and eliminate illicit discharges within the MS4

**Construction Site Stormwater Runoff Control** - a program to effectively control construction site stormwater discharges to the MS4

**Post Construction Stormwater Management** - a program to ensure that stormwater from development projects entering the MS4 is adequately controlled by the construction of stormwater controls

**Good Housekeeping and Pollution Prevention for Permittee Owned Operations** - program to ensure that stormwater pollution sources on municipal properties and from municipal operations are minimized.

In addition to these six measures the Town of Medway is also responsible for discharges to certain impaired waters. Details on these requirements are discussed in Section 1.3 of this document.

## **1.1 History of the Stormwater Regulations and Requirements**

The Stormwater Phase II Final Rule was promulgated in 1999 and was the next step after the 1987 Phase I Rule in EPA's effort to preserve, protect, and improve the Nation's water resources from polluted stormwater runoff. The Phase II program expanded the Phase I program by requiring additional operators of MS4s in urbanized areas and operators of small construction sites, through the use of NPDES Permits, to implement programs and practices to control polluted stormwater runoff. Phase II is intended to further reduce adverse impacts to water quality and aquatic habitat by instituting the use of controls on the unregulated sources of stormwater discharges that have the greatest likelihood of causing continued environmental degradation. Under the Phase II rule all MS4s with stormwater discharges from Census designated Urbanized Area are required to seek NPDES Permit coverage for those stormwater discharges (see Figure 1).

On May 1, 2003, EPA Region 1 issued its Final General Permit for Stormwater Discharges from Small Municipal Separate Storm Sewer Systems (2003 small MS4 Permit) consistent with the Phase II rule. The 2003 small MS4 Permit covered "traditional" (i.e., cities and towns) and "non-traditional" (i.e., Federal and state agencies) MS4 Operators located in the states of Massachusetts and New Hampshire. This Permit expired on May 1, 2008 but remained in effect until operators were authorized under the 2016 MS4 general Permit, which became effective on July 1, 2018.

On January 6, 2021 a revised version of the MS4 Permit was issued.

## **1.2 Eligibility Requirements**

In order for the Town to discharge stormwater to the Waters of the United States, it completed a Notice of Intent (NOI) and receive authorization from the EPA via the NPDES MS4 General Permit. Details on the eligibility provisions can be found in Section 1.2 and Section 1.9 of the General Permit.

The Town of Medway is an existing MS4 covered under the 2003 MS4 Permit and continues to meet the provisions of a small MS4 within the Commonwealth of Massachusetts. The majority of the Town is located within an urbanized area which also qualifies the Town for an MS4 Permit (see Figure 1).

### **1.2.1 Special Eligibility Requirements**

The Town of Medway must also provide documentation supporting the Town's eligibility determination with regard to the federal Endangered and Threatened Species and Critical Habitat Protection and Historic Properties Preservation.

The results from the U.S Fish and Wildlife Services endangered species screening system determined that Medway's MS4 area contains the Northern Long-eared Bat. Using the Endangered Species Act Eligibility Criteria, the Town is eligible for the MS4 Permit under Criterion C.

The Town also went through consultation with the State Historic Preservation Officer. Rabbit Hill Historic District and Medway Village Historic District are the two federally listed Historic Properties in Medway, and therefore, the Town is eligible under Criterion A for these areas.

Supporting documentation was included in the Town's NOI and is provided in Appendix C.



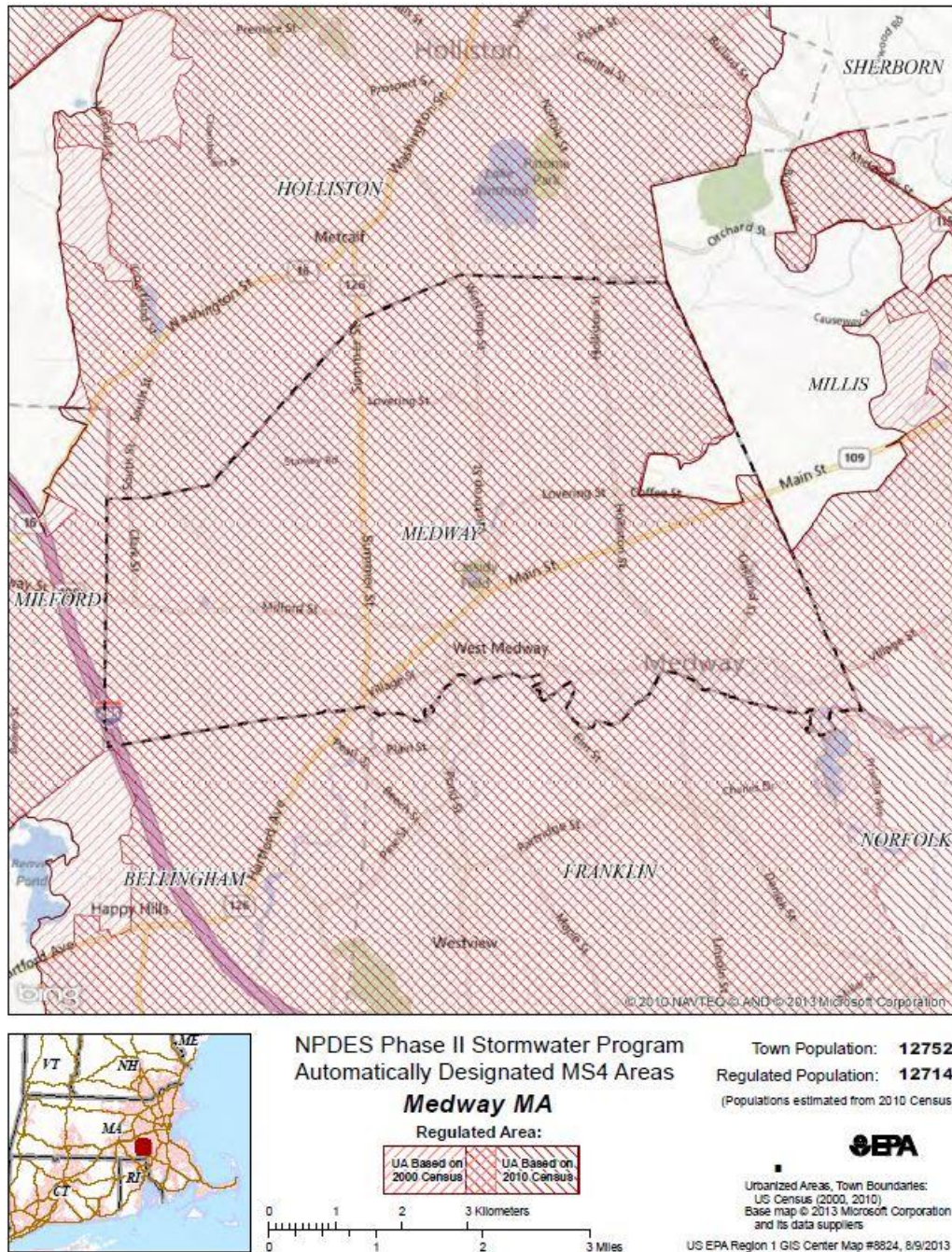


Figure 1 Automatically Designated MS4 Area in the Town of Medway.

### 1.3 Impaired Waters in Medway

According to the Massachusetts Integrated List of Impaired Waters for the Clean Water Act 2018/2020 (updated November 2021) the following impaired waters are found within the boundaries of the Town of Medway.

**Table 1: Impaired Waters in Town of Medway**

<b>Water Body</b>	<b>Segment ID</b>	<b>2016 Impairment Category</b>	<b>2016 Impairment</b>	<b>EPA TMDL #</b>
Charles River	MA 72-04	5	Flow Regime Modification*	
			Ambient Bioassays – Chronic Aquatic Toxicity	
			Chlordane in Fish Tissue	
			DDT in Fish Tissue	
			Escherichia (E. Coli)	32366
			Fish Bioassessments	
			Mercury in Fish Tissue	
			Nutrient/Eutrophication Biological Indicators	
			Phosphorus, Total	
			Temperature	
Charles River	MA 72-05	5	(Fanwort*)	
			(Water Chestnut*)	
			Algae	40317
			Benthic Macroinvertebrates	
			Chlordane in Fish Tissue	
			DDT in Fish Tissue	
			Dissolved Oxygen	40317
			Dissolved Oxygen Supersaturation	40317
			Mercury in Fish Tissue	

			Nutrient/Eutrophication Biological indicators	40317
			Phosphorus, Total	40317
			Turbidity	40317
Chicken Brook	MA 72-34	5	E. coli	
Hopping Brook	MA 72-35	5	E. coli	

On June 10, 2011, the EPA approved the Total Maximum Daily Load for Nutrients in the Upper/Middle Charles River. Therefore, the Town must comply with Appendix F (A) (I) – Charles River Watershed Phosphorus TMDL Requirements. As a part of these requirements the Town will implement a Phosphorus Control Plan (PCP) within the entire municipal boundary. On January 6, 2021, the TMDL target reductions were increased after the EPA determined the phosphorus removal credits from the Illicit Discharge Detection and Elimination Program should not be included because the program began during the current Permit term. The updated target reductions are shown in **Table 2** below.

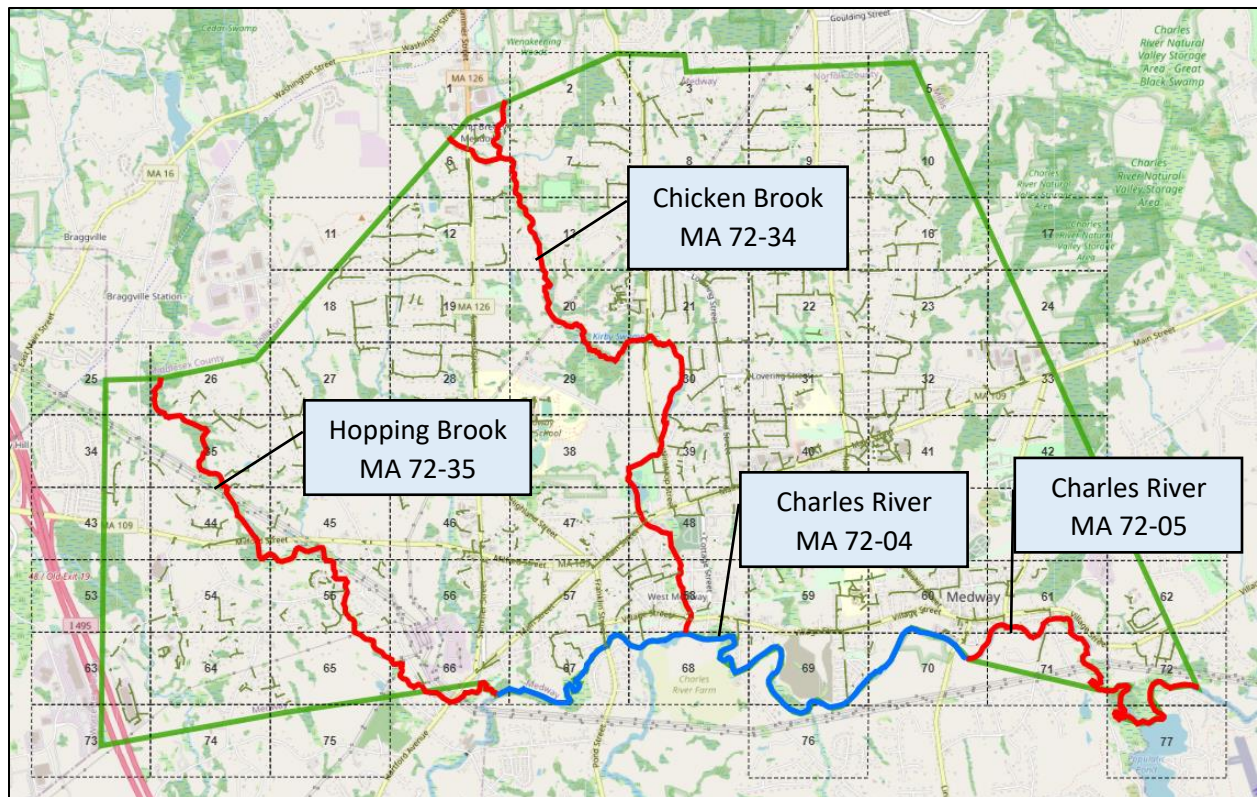
The Charles River segments 72-04 and 72-05 are also listed as having a pathogen impairment. Therefore, the Town must meet the requirements listed in section 2.3 of the Permit as well as the enhanced BMPs listed in Appendix F (A) (III).

Chicken Brook and Hopping Brook were recategorized from Category 2 waters to Category 5 waters on the 2016 List, and therefore, must comply with Appendix F A (III) for Bacteria and Pathogen TMDL requirements.

**Table 2 Community Annual Stormwater Phosphorus Load Reduction for the Town of Medway**

Baseline Phosphorus Load (kg/year)	Stormwater Phosphorus Load Reduction Requirement (kg/year)	Allowable Phosphorus Load (kg/year)	Stormwater Percent Reduction in Phosphorus Load (%)
1,063	400	662	38%





**Figure 2: Impaired waters in Medway by their segment identification.**

## 1.4 Small MS4 Authorization

The Town submitted its NOI on September 28, 2019, which can be found in Appendix C.

The Town received Authorization to Discharge on April 22, 2019. The Authorization Letter can be found in Appendix A.

The Town received “Administratively Continued Permit Coverage” on May 16, 2022. The Authorization Letter can be found in Appendix B.

## 1.5 Permit Year Definitions

In accordance with the MS4 Permit, there are several deliverables that must be met during certain Permit years. The Permit Years (PY) are as follows:

PY1: July 1, 2018 to June 30, 2019

PY2: July 1, 2019 to June 30, 2020

PY3: July 1, 2020 to June 30, 2021

PY4: July 1, 2021 to June 30, 2022

PY5: July 1, 2022 to June 30, 2023





The following sections list the minimum control measures the Town will undertake during the Permit term as identified in the Notice of Intent. The tables list each measure, the responsible party for implementation, the intended audience, the method in which the Town will track the success of the measure, the beginning year of implementation, and the status of each measure is included in the tables.

## **MCM 1 Public Education and Outreach**

### Permit Part 2.3.2

**Objective:** The Permittee shall implement an education program that includes educational goals based on stormwater issues of significance within the MS4 area. The ultimate objective of a public education program is to increase knowledge and change behavior of the public so that the pollutants in stormwater are reduced.

#### **Update**

During Year 5, the Town continued to use its social media platforms to communicate with the public. During the spring of 2023, the Town hosted its annual Medway Pride Day event. The Department of Public Works as well as the Energy and Sustainability Committee were able to share information with the public about stormwater and phosphorus removal requirements. As the program has evolved it seems that the messages and methods listed in the NOI do not align as well as anticipated. For example, the electronic message board is better suited for leaf litter education rather than pet waste management education. The Medway Matters Monthly Newsletter has been discontinued in favor of regular social media posts.

Below is a table listing the educational messages the Town distributed through social media during permit Year 5.

<b>Date</b>	<b>Message Topic</b>	<b>Likes</b>	<b>Comments</b>	<b>Shares</b>	<b>People Reached</b>	<b>Engagements</b>
11/1/2022	Leaf litter clean up and phosphorus reduction	1	0	0	136	1
11/2/2022	Leaf litter clean up and phosphorus reduction	3	1	0	86	3
11/9/2022	Leaf litter clean up and phosphorus reduction	1	1	0	61	1

5/2/2023	Green infrastructure and nature based solutions	18	1	0	390	19
5/24/2023	Lawn and Landscaping maintenance and management	25	0	0	197	5
5/26/2023	Pet Waste Management - Scoop the poop	9	0	1	196	9
5/29/2023	Pet Waste Management - Scoop the poop	3	0	0	138	3
5/30/2023	Lawn and Landscaping maintenance and management	17	2	0	556	20

BMP ID	BMP Media/Category	BMP Description	Targeted Audience	Responsible Personnel	Measurable Goal	Beginning Year of Implementation	Status
1-1	Special Events/Festivals/Fairs	Engage residents during annual Medway Pride Day. Explain MS4 Permit and why it matters and how it relates to everyday life. Focus on pet waste, lawn care and fertilizer BMPs, septic system management, snow and ice removal, rain barrels, and GI.	Residents	Conservation Agent	Staff a booth/table minimum once every 2 years.	Year 2	<p>Year 1: Hosted event May 18, 2019.</p> <p>Year 2: Event canceled in 2020 due to pandemic.</p> <p>Year 3: Event canceled in 2021 due to pandemic.</p> <p>Year 4: Hosted event May 21, 2022.</p> <p>Year 5: Hosted event May 20, 2023</p>
1-2	Brochures/Pamphlets	Grass clippings and fertilizer management: update existing Medway brochure. Include landscape management, fertilizer use, and snow and ice removal.	Businesses/Institutions and Commercial Facilities	DPW	Continual distribution of brochure at the following locations: Town Hall, Planning Office, ConCom Office, DPW Office; Mailing to top 20% (by parcel size) commercial property owners in Medway.	Year 1	<p>Year 1: Distribute brochures in the DPW office. Did not mail to commercial property owners.</p> <p>Year 2: No update.</p> <p>Year 3: No update.</p> <p>Year 4: Emailed 41 local landscape companies the landscape management best practices flyer. Requested read receipts.</p> <p>Year 5: Emailed 41 local landscape companies the landscape management best practices flyer. Requested read receipts.</p>
1-3	Brochures/Pamphlets	Sedimentation and erosion control messaging.	Developers (construction)	Planning and Economic Development Coordinator	Distribution of pamphlet at Planning offices to developers seeking Permits through site development process.	Year 2	<p>Year 1: N/A</p> <p>Year 2: Incomplete</p> <p>Year 3: Incomplete</p> <p>Year 4: Complete</p> <p>Year 5: Complete</p>
1-4	Brochures/Pamphlets	Management of SW from metal roofs (Zone II related); proper maintenance of parking lot surfaces	Industrial Facilities	DPW	Mail to 100% of industrially zoned parcels.	Year 2	<p>Year 1: N/A</p> <p>Year 2: Incomplete</p> <p>Year 3: Incomplete</p> <p>Year 4: Complete</p> <p>Year 5: Complete</p>
1-5	Electronic Messaging Board	Rotating (seasonal) messages on grass clippings and fertilizer management, pet waste	Residents	DPW	Message Boards placed at publicly accessible locations.	Year 3	<p>Year 1: N/A</p> <p>Year 2: N/A</p>



		management, snow and ice treatments, and septic system management.					Year 3: Incomplete Year 4: Seasonal messages were posted to the Town' Facebook page.  Year 5: Seasonal messages were posted to the Town's Facebook page.
1-6	Medway Matters monthly digital newsletter	Preventing SSOs through FOG program; highlighting impacts of FOG article	Businesses/Institutions and Commercial Facilities	Communications Director	Achieve "open" rate of greater than 50% for edition newsletter.	Year 4	Year 1: N/A Year 2: No longer distribute the newsletter. Year 3: No Update Year 4: No Update Year 5: No Update
1-7	Local Public Service Announcements	Posting of PSA on FB page re: good site maintenance and LID techniques for residential development	Developers (construction)	Communications Director	100% response to questions or comments posted on the page in relation to PSA.	Year 5	Year 1: N/A Year 2: N/A Year 3: N/A Year 4: N/A Year 5: Complete
1-8	Newspaper Articles/Press Release	Waste management best practices such as covering dumpsters, sweeping regularly, keeping inventory and waste within buildings or protected from SW.	Industrial Facilities	DPW	Mail to 100% of industrially zoned parcels.	Year 5	Year 1: N/A Year 2: N/A Year 3: N/A Year 4: Complete Year 5: Complete

## **MCM 2: Public Involvement and Participation**

---

### Permit Part 2.3.3

**Objective:** The Permittee shall provide opportunities to engage the public to participate in the review and implementation of the Permittee's SWMP.

BMP ID	BMP Media/Category	BMP Description	Responsible Personnel	Measurable Goal	Beginning Year of Implementation	Status
2-1	Public Review	SWMP Review; to be available through website redirect to stormwater page.	DPW	Allow annual review of stormwater management plan and posting of stormwater management plan on website.	Year 1	Year 1: Complete Year 2: Complete Year 3: Complete Year 4: Complete Year 5: Complete
2-2	Public Participation	Public comment on SWMP.	DPW	Allow public to comment on stormwater management plan annually.	Year 1	Year 1: Complete Year 2: Complete Year 3: Complete Year 4: Complete Year 5: Complete
2-3	Public Participation	Direct messages to support participation in Town's Household Hazardous Waste Day.	DPW	Track volume of material collected and number of residents participating.	Year 2	Year 1: Complete Year 2: Complete Year 3: Hosted 2 events. Year 4: Hosted 2 events. Year 5: Hosted 2 events.
2-4	Public Participation	Direct messages to support participation in Town's "Clean Sweep" Day.	DPW	Track volume of material collected and number of residents participating.	Year 2	Year 1: Complete Year 2: Cancelled by pandemic. Year 3: Cancelled by pandemic. Year 4: Complete. 30+ volunteers filled a 10yd trash container. Year 5: Complete.

## **MCM 3 Illicit Discharge Detection and Elimination (IDDE) Program**

---

### Permit Part 2.3.4

**Objective:** The Permittee shall implement an IDDE program to systematically find and eliminate illicit sources of non-stormwater discharges to its municipal separate storm sewer system and implement procedures to prevent such discharges.



BMP ID	BMP Media/Category	BMP Description	Responsible Personnel	Measurable Goal	Beginning Year of Implementation	Status
3-1	SSO Inventory	Maintain SSO Inventory in accordance with Permit conditions.	DPW	Town has completed the requirements of this BMP via the IWRMP. Maintain inventory as new information becomes available.	Year 1	Year 1: Complete Year 2: Complete Year 3: Complete Year 4: Complete Year 5: Complete
3-2	Storm sewer system map	Update map as appropriate during IDDE program implementation.	GIS Coordinator	Map 100% of outfalls and receiving waters, open channel conveyances, interconnections , municipally-owned stormwater treatment structures, waterbodies identified by name and indication of all use impairments, and initial catchment delineations within 2 years of the Permit's effective date.	Year 2	Year 1: Partial Year 2: Partial Year 3: Complete Year 4: Complete Year 5: Complete
3-3	Written IDDE Plan	Create written IDDE program	DPW	Existing written IDDE program to be updated within 1 year of effective date of Permit and update as required.	Year 1	Year 1: Partial Year 2: Partial Year 3: Complete Year 4: N/A Year 5: N/A
3-4	Implement revised IDDE Program	Implement catchment investigations according to program and Permit conditions.	DPW	Complete within 10 years of Permit effective date.	Year 1	Year 1: N/A Year 2: N/A Year 3: Began implementation Year 4:N/A Year 5: Incomplete
3-5	Employee Training	Train employees on IDDE implementation	DPW	Train annually	Year 1	Year 1: Incomplete Year 2: Complete Year 3: Complete Year 4: Complete Year 5: Complete
3-6	Conduct dry weather screening	Conduct in accordance with outfall screening procedures and Permit conditions.	DPW	Complete within 3 years of effective date of Permit.	Year 2	Year 1: N/A Year 2: Partial Year 3: Complete Year 4: N/A Year 5: N/A
3-7	Conduct wet weather screening	Conduct in accordance with outfall screening procedures and Permit conditions.	DPW	Complete 10 years after effective date of Permit.	Year 3	Year 1: N/A Year 2: N/A Year 3: Began implementation Year 4: Continuing Year 5: Continuing
3-8	Ongoing screening	Conduct dry and wet weather screening as needed.	DPW	Complete ongoing outfall screening upon completion of IDDE program.	Year 5	Year 1: N/A Year 2: Partial Year 3: Partial Year 4: Continuing Year 5: Continuing

## **MCM 4 Construction Site Stormwater Runoff Control**

---

### **Permit Part 2.3.5**

**Objective:** The objective of an effective construction stormwater runoff control program is to minimize or eliminate erosion and maintain sediment on site so that it is not transported in stormwater and allowed to discharge to a water of the U.S. through the Permittee 's MS4.

BMP 4-1: October 7, 2020 Meeting between DPW, Community and Economic Development Department, and Conservation to establish procedures site inspection, enforcement and tracking. Planning and Economic Development Coordinator and Conservation Agent will maintain their records for number of Land Disturbance Permit Reviews completed in a year. They will also track the number of inspections and enforcements. For Conservation Commission, Conservation Agent will complete the inspections and enforcement orders. For Community and Economic Development Department, an outside consultant will complete the inspections and enforcements. At the beginning of each fiscal year, the Sustainability Coordinator will reach out to these departments for the tally of completed reviews, inspections, and enforcements completed in the prior fiscal year and report them in the MS4 Annual Report.

BMP ID	BMP Media/Category	BMP Description	Responsible Personnel	Measurable Goal	Beginning Year of Implementation	Status
4-1	Site inspection and enforcement of erosion and sediment control measures	Complete written procedures of site inspections and enforcement procedures	DPW, Conservation Agent, Community and Economic Development Department, Building Department	Maintain current procedures and document 100% of inspections.	Year 1	Year 1: Complete Year 2: N/A Year 3: Updated Year 4: N/A Year 5: N/A
4-2	Site Plan Review	Complete written procedures of site plan review and begin implementation	Planning and Economic Development Coordinator	Complete update to existing review procedures within 1 year of the effective date of Permit.	Year 1	Year 1: Complete Year 2: N/A Year 3: N/A Year 4: N/A Year 5: N/A
4-3	Erosion and Sediment Control	Adoption of requirements for construction operators to implement a sediment and erosion control program	Planning and Economic Development Coordinator	Maintain current procedures and document 100% project close-outs of construction phase controls.	Year 1	Year 1: Complete Year 2: Complete Year 3: Complete Year 4: Complete Year 5: Complete
4-4	Waste Control	Adoption of requirements to control wastes including but not limited to discarded building materials, concrete truck wash out, chemicals, litter, and sanitary wastes.	Planning and Economic Development Coordinator	Maintain current procedures	Year 1	Year 1: Complete Year 2: N/A Year 3: N/A Year 4: N/A Year 5: N/A

## **MCM 5 Post Construction Stormwater Management in New Development and Redevelopment**

---

### Permit Part 2.3.6

**Objective:** The objective of an effective post construction stormwater management program is to reduce the discharge of pollutants found in stormwater to the MS4 through the retention or treatment of stormwater after construction on new or redeveloped sites and to ensure proper maintenance of installed stormwater controls.

BMP 5-1: October 7, 2020 Meeting between DPW, Community and Economic Development Department, and Conservation to establish procedures for the submission of As-Builts. Once a Land Disturbance Permit has been issued and the project has been issued either a Certificate of Compliance or Certificate of Completion, the following documents will be uploaded to the Town's One Drive: As-built plan, Long Term Operation and Maintenance, specifications for BMPs, drainage report, and certification that these documents are recorded in the Registry of Deeds. Each property will have a folder where the Sustainability Coordinator will collect and store annual reports documenting compliance with the Long Term O&M plans.



BMP ID	BMP Media/Category	BMP Description	Responsible Personnel	Measurable Goal	Beginning Year of Implementation	Status
5-1	As-Built plans for on-site stormwater control	The procedures to require submission of as-built drawings and ensure long term operation and maintenance will be a part of the SWMP	Planning and Economic Development Coordinator	Require submission of as-built plans for 100% of completed projects.	Year 1	Year 1: Complete Year 2: N/A Year 3: N/A Year 4: N/A Year 5: N/A
5-2	Target properties to reduce impervious areas	Identify at least 5 Permittee -owned properties that could be modified or retrofitted with BMPs to reduce impervious areas and update annually	DPW	Analysis complete and properties identified; report annually on status of retrofit-candidate properties.	Year 4	Year 1: N/A Year 2: Complete Year 3: N/A Year 4: N/A Year 5: Complete
5-3	Allow Green Infrastructure	Develop a report assessing existing local regulations to determine the feasibility of making green infrastructure practices allowable when appropriate site conditions exist	Planning and Economic Development Coordinator	Complete 4 years after effective date of Permit and implement recommendations of report.	Year 3	Year 1: N/A Year 2: N/A Year 3: N/A Year 4: Complete Year 5: N/A
5-4	Street design and parking lot guidelines	Develop a report assessing requirements that affect the creation of impervious cover. The assessment will help determine if changes to design standards for streets and parking lots can be modified to support low impact design options.	Planning and Economic Development Coordinator	Complete 4 years after effective date of Permit and implement recommendations of report.	Year 3	Year 1: N/A Year 2: N/A Year 3: N/A Year 4: Complete Year 5: N/A
5-5	Ensure any stormwater controls or management practices for new development and redevelopment meet the retention or treatment requirements of the Permit and all applicable requirements of the Massachusetts Stormwater Handbook and MS4 Permit (e.g. 1" retention from impervious area for new development).	Adoption, amendment, or modification to current regulation to meet Permit requirements	Planning and Economic Development Coordinator	Complete update to existing mechanism (if necessary) 2 years after effective date of Permit.	Year 1	Year 1: Complete Year 2: N/A Year 3: N/A Year 4: N/A Year 5: N/A

## **MCM 6 Good Housekeeping and Pollution Prevention for Permittee Owned Operations**

---

### Permit Part 2.3.7

**Objective:** The Permittee shall implement an operations and maintenance program for Permittee -owned operations that has a goal of preventing or reducing pollutant runoff and protecting water quality from all Permittee-owned operations.

BMP ID	BMP Media/Category	BMP Description	Responsible Personnel	Measurable Goal	Beginning Year of Implementation	Status
6-1	O&M Procedures	Create written O&M procedures including all requirements contained in 2.3.7.a.ii for parks and open spaces, buildings and facilities, and vehicles and equipment.	DPW	Update the O&M plan as needed for new equipment and protocols (e.g. revised street sweeping or CB cleaning).	Year 1	Year 1: Incomplete Year 2: Incomplete Year 3: Incomplete Year 4: Complete Year 5: N/A
6-2	Inventory all Permittee - owned parks and open spaces, buildings and facilities, and vehicles and equipment.	Create inventory	DPW	Update the inventory annually as needed.	Year 1	Year 1: Incomplete Year 2: Incomplete Year 3: Incomplete Year 4: Complete Year 5: N/A
6-3	Infrastructure O&M	Establish and implement a program for repair and rehabilitation of MS4 infrastructure.	DPW	Update plan within 2 years of effective date of Permit.	Year 2	Year 1: Incomplete Year 2: Incomplete Year 3: Incomplete Year 4: Incomplete Year 5: Partial
6-4	Stormwater Pollution Prevention Plan (SWPPP)	Create SWPPP for maintenance garages, transfer stations, and other waste-handling facilities.	DPW	Complete and implement within 2 years effective date of Permit.	Year 2	Year 1: Incomplete Year 2: Incomplete Year 3: Complete Year 4: N/A Year 5: N/A
6-5	Catch basin cleaning	Establish a schedule for catch basin cleaning so that each catch basin is never more than 50% full.	DPW	Clean catch basins on established schedule and report the number of catch basins cleaned and volume of material removed annually.	Year 1	Year 1: Complete Year 2: Complete Year 3: Complete Year 4: Complete Year 5: Complete
6-6	Street sweeping program	Sweep all streets and Permittee -owned parking lots in accordance with Permit conditions	DPW	Sweep all streets and Permittee -owned parking lots annually	Year 1	Year 1: Complete Year 2: Complete Year 3: Complete Year 4: Complete Year 5: Complete
6-7	Road salt use optimization program	Establish and implement a program to minimize the use of road salt	DPW	Implement salt use optimization during deicing season	Year 1	Year 1: Incomplete Year 2: Incomplete Year 3: Incomplete Year 4: Incomplete Year 5: Partial
6-8	Inspection and maintenance of stormwater infrastructure	Establish and implement inspection and maintenance procedures and frequencies	DPW	Inspect and maintain treatment structures in conformance with manufacturer's guidance	Year 1	Year 1: Complete Year 2: Complete Year 3: Complete Year 4: Complete Year 5: Complete

# **Charles River Watershed Phosphorus TMDL Requirements**

Appendix F Part A Section I



BMP ID	BMP Category	BMP Description	Responsible Personnel	Measurable Goal		Status
7-1	Public Education and Outreach	Distribute an annual message in the spring(April/May) that encourages the proper use and disposal of grass clippings and encourages the proper use of slow-release and phosphorus free fertilizers.	DPW	Educational posts on Town's social media account. Display message on electronic signs.	Annual Requirement	Complete
7-2	Public Education and Outreach	Distribute an annual message in the summer (June/July) encouraging the proper management of pet waste, including waste, including noting any existing ordinances where appropriate	DPW	Educational posts on Town's social media account.	Annual Requirement	Complete
7-3	Public Education and Outreach	Distribute an annual message in the fall (August/September/October) encouraging the proper disposal of leaf litter.	DPW	Educational posts on Town's social media account. Display message on electronic signs.	Annual Requirement	Complete
7-4	Good Housekeeping and Pollution Prevention for Permittee-owned operations	Increase street sweeping frequency of all municipal owned streets and parking lots subject to Permit part 2.3.7.a.iii.(c) to a minimum of two times per year (spring and fall)	DPW	Track miles swept and volume of material collected	Annual Requirement	Complete
7-5	Good Housekeeping and Pollution Prevention for Permittee-owned operations	Establish procedures to properly manage grass cuttings and leaf litter on permittee property, including prohibiting blowing organic waste materials onto adjacent impervious surfaces	DPW	Staff training and reminders as needed	Annual Requirement	Complete

7-6	Stormwater Management in New and Redevelopment	Retrofit inventory and priority ranking under 2.3.6.1.b. shall include consideration of BMPs to reduce phosphorus discharges	DPW	Create an inventory of private BMPs and identify what can be retrofitted. Update Bylaw to include this authority.	Annual Requirement	Complete
7-7	Phosphorus Reduction Tracking BMP	Any structural BMPs listed in Table 3 of Attachment 1 to Appendix H already existing or installed in the regulated area by the permittee or its agents shall be tracked and the permittee shall estimate the phosphorus removal by the BMP consistent with Attachment 1 to Appendix H.	DPW	The BMP type, total area treated by the BMP, the design storage volume of the BMP and the estimated phosphorus removed in pass per year by the BMP is found in the following document or website and is updated yearly at a minimum:	Annual Requirement	Complete 2021
7-8	Stormwater Management in New and Redevelopment	The requirement for adoption/amendment of the permittee's ordinance or other regulatory mechanism shall include a requirement that new development and redevelopment stormwater management BMPs be optimized for phosphorus removal.	DPW		Due year 2	Complete

7-9	Stormwater Management in New and Redevelopment	Complete a Phosphorus Source Identification Report	DPW		Due year 4	Incomplete
7-10	Stormwater Management in New and Redevelopment	Retrofit inventory and priority ranking under 2.3.6.1.b. shall include consideration of BMPs that infiltrate stormwater where feasible	DPW		Due year 4	Complete
7-11	Potential Structural BMPs	Evaluate all permittee-owned properties identified as presenting retrofit opportunities or areas for structural BMP installation under Permit part 2.3.6.d.ii or identified in the Phosphorus Source Identification Report that are within the drainage area of the impaired water or its tributaries	DPW		Due year 5	Partial
7-12	Potential Structural BMPs	Complete a listing of planned structural BMPs and a plan and schedule for implementation	DPW		Due Year 5	Partial

## Bacteria and Pathogen TMDL Requirements

### Appendix F Part A Section III

BMP ID	BMP Category	BMP Description	Responsible Personnel	Measurable Goal		Status
8-1	Mapping	Rank outfalls to these receiving waters as high priority for IDDE implementation in the initial outfall ranking	DPW	Create list of outfalls and related BMPs that drain directly to receiving waters	Annual requirement	Complete
8-2	Public Education and Outreach	Annual message encouraging the proper management of pet waste, including noting any existing ordinances where appropriate	DPW	Educational posts on Town's social media account	Annual requirement	Complete
8-3	Public Education and Outreach	Permittee or its agents disseminate educational material to dog owners at the time of issuance or renewal of dog licenses, or other appropriate time	DPW	Automatic messaging using online license renewal portal. Educational signage at Dog Park. Coordinate with local dog-related businesses to share information.	Annual requirement	Complete
8-4	Public Education and Outreach	Provide information to owners of septic systems about proper maintenance in any catchment that discharges to a water body impaired for bacteria.	DPW	Direct mailing to residents with septic systems, or newspaper advertisement in coordination with approved septic haulers. Brochure at BOH and DPW for distribution and at change of owner. Educational post on Town's social media account.	Annual requirement	Complete

## Stormwater Management Program – Certification

“I certify under penalty of law that this document and all attachments were prepared under my direction or supervision in accordance with a system designed to assure that qualified personnel properly gathered and evaluated the information submitted. Based on my inquiry of the person or persons who manage the system, or those persons directly responsible for gathering the information, the information submitted is, to the best of my knowledge and belief, true, accurate, and complete. I am aware that there are significant penalties for submitting false information, including the possibility of fine and imprisonment for knowing violations.”

---

Authorized Official

Town Manager

Title

## Appendix A - Town of Medway MS4 Permit Coverage



UNITED STATES ENVIRONMENTAL PROTECTION AGENCY  
REGION 1  
5 POST OFFICE SQUARE, SUITE 100  
BOSTON, MA 02109-3912

### VIA EMAIL

April 22, 2019

Mr. Michael E. Boynton  
Town Administrator

And;

David D'Amico  
Director, Department of Public Services  
45(b) Holliston Street  
Medway, MA. 02053  
ddamico@townofmedway.org

Re: National Pollutant Discharge Elimination System Permit ID #: MAR041132, Town of Medway

Dear David D'Amico:

The 2016 NPDES General Permit for Stormwater Discharges from Small Municipal Separate Storm Sewer Systems in Massachusetts (MS4 General Permit) is a jointly issued EPA-MassDEP permit. Your Notice of Intent (NOI) for coverage under this MS4 General Permit has been reviewed by EPA and appears to be complete. You are hereby granted authorization by EPA and MassDEP to discharge stormwater from your MS4 in accordance with the applicable terms and conditions of the MS4 General Permit, including all relevant and applicable Appendices. This authorization to discharge expires at midnight on **June 30, 2022**.

For those permittees that certified Endangered Species Act eligibility under Criterion C in their NOI, this authorization letter also serves as EPA's concurrence with your determination that your discharges will have no effect on the listed species present in your action area, based on the information provided in your NOI.

As a reminder, your first annual report is due by **September 30, 2019** for the reporting period from May 1, 2018 through June 30, 2019.

Information about the permit and available resources can be found on our website:  
<https://www.epa.gov/npdes-permits/massachusetts-small-ms4-general-permit>. Should you have

any questions regarding this permit please contact Newton Tedder at [tedder.newton@epa.gov](mailto:tedder.newton@epa.gov) or (617) 918-1038.

Sincerely,

A handwritten signature in blue ink that reads "Thelma Murphy". The signature is fluid and cursive, with the first name "Thelma" being more prominent than the last name "Murphy".

Thelma Murphy, Chief  
Stormwater and Construction Permits Section  
Office of Ecosystem Protection  
United States Environmental Protection Agency, Region 1

and;

A handwritten signature in black ink that reads "Lealdon Langley". The signature is cursive and somewhat stylized, with the first name "Lealdon" being more prominent than the last name "Langley".

Lealdon Langley, Director  
Wetlands and Wastewater Program  
Bureau of Water Resources  
Massachusetts Department of Environmental Protection



## Appendix B – Administratively Continued Permit Coverage



### UNITED STATES ENVIRONMENTAL PROTECTION AGENCY

Region 1  
5 Post Office Square – Suite 100  
BOSTON, MA 02109-3912

VIA EMAIL

May 16, 2022

Re: 2016 Massachusetts Small Municipal Separate Storm Sewer System General Permit -  
Administratively Continued Permit Coverage

Dear Permit Holder:

You are receiving this letter because stormwater discharges from your municipal separate storm sewer system (MS4) are currently authorized under the 2016 Massachusetts Small MS4 Permit (MA MS4 permit), which will expire on July 1, 2022. In accordance with Part 1.6 of the MA MS4 Permit, the MA MS4 Permit will be administratively continued on July 1, 2022. The MA MS4 Permit will remain in force and effect for discharges that were authorized prior to July 1, 2022 until such discharges are authorized under a reissued general permit, an individual permit, or other alternative general permit. No action is required at this time to remain covered under the MA MS4 Permit.

If you have any questions regarding this matter, please contact Newton Tedder ([tedder.newton@epa.gov](mailto:tedder.newton@epa.gov)) at USEPA or Laura Schiffman ([laura.schifman@mass.gov](mailto:laura.schifman@mass.gov)) at MassDEP.

Sincerely,

**LYNNE JENNINGS** Digitally signed by LYNNE JENNINGS  
Date: 2022.05.16 10:55:24 -04'00'

Lynne Jennings, Chief  
Water Permits Branch  
Water Division  
USEPA

A handwritten signature in black ink, appearing to read "Lealdon Langley", is positioned above the printed name and title of the Director of the Division of Watershed Management at MassDEP.

Lealdon Langley, Director  
Division of Watershed Management  
MassDEP

## **Appendix C – Notice of Intent**

# Notice of Intent (NOI) for coverage under Small MS4 General Permit Page 1 of 21

## Part I: General Conditions

### General Information

Name of Municipality or Organization:  State:

EPA NPDES Permit Number (if applicable):

### Primary MS4 Program Manager Contact Information

Name:  Title:

Street Address Line 1:

Street Address Line 2:

City:  State:  Zip Code:

Email:  Phone Number:

Fax Number:

### Other Information

Stormwater Management Program (SWMP) Location (web address or physical location, if already completed):

### Eligibility Determination

Endangered Species Act (ESA) Determination Complete?

Eligibility Criteria (check all that apply): ☐ A ☐ B ☒ C

National Historic Preservation Act (NHPA) Determination Complete?

Eligibility Criteria (check all that apply): ☒ A ☐ B ☐ C

☒ Check the box if your municipality or organization was covered under the 2003 MS4 General Permit

### MS4 Infrastructure (if covered under the 2003 permit)

Estimated Percent of Outfall Map Complete?  If 100% of 2003 requirements not met, enter an estimated date of completion (MM/DD/YY):

Web address where MS4 map is published:   
If outfall map is unavailable on the internet an electronic or paper copy of the outfall map must be included with NOI submission (see section V for submission options)

### Regulatory Authorities (if covered under the 2003 permit)

Illicit Discharge Detection and Elimination (IDDE) Authority Adopted?  Effective Date or Estimated Date of Adoption (MM/DD/YY):

Construction/Erosion and Sediment Control (ESC) Authority Adopted?  Effective Date or Estimated Date of Adoption (MM/DD/YY):

Post-Construction Stormwater Management Adopted?  Effective Date or Estimated Date of Adoption (MM/DD/YY):

## Notice of Intent (NOI) for coverage under Small MS4 General Permit

## Part II: Summary of Receiving Waters

Please list the waterbody segments to which your MS4 discharges. For each waterbody segment, please report the number of outfalls discharging into it and, if applicable, any impairments.

Massachusetts list of impaired waters: *Massachusetts 2014 List of Impaired Waters*- <http://www.mass.gov/eea/docs/dep/water/resources/07v5/14list2.pdf>

Check off relevant pollutants for discharges to impaired waterbodies (see above 303(d) lists) without an approved TMDL in accordance with part 2.2.2.a of the permit. List any other pollutants in the last column, if applicable.

[illegible]

Click to lengthen table

## Notice of Intent (NOI) for coverage under Small MS4 General Permit

### Part III: Stormwater Management Program Summary

Identify the Best Management Practices (BMPs) that will be employed to address each of the six Minimum Control Measures (MCMs). For municipalities/organizations whose MS4 discharges into a receiving water with an approved Total Maximum Daily Load (TMDL) and an applicable waste load allocation (WLA), identify any additional BMPs employed to specifically support the achievement of the WLA in the TMDL section at the end of part III.

For each MCM, list each existing or proposed BMP by category and provide a brief description, responsible parties/departments, measurable goals, and the year the BMP will be employed (public education and outreach BMPs also requires a target audience). **Use the drop-down menus in each table or enter your own text to override the drop down menu.**

#### MCM 1: Public Education and Outreach

BMP Media/Category (enter your own text to override the drop down menu)	BMP Description	Targeted Audience	Responsible Department/Parties (enter your own text to override the drop down menu)	Measurable Goal	Beginning Year of BMP Implementation
Special Events/Festivals/Fairs	Engage residents during annual Medway Pride Day. Explain MS4 permit and why it matters and how it relates to everyday life. Focus on pet waste, lawn care and fertilizer BMPs, septic system management, snow and ice removal, rain barrels, and GI	Residents	Conservation Commission: Bridget Graziano	Staff a booth/table minimum once every 2 years.	2019
Brochures/Pamphlets	Grass clippings and fertilizer management: update existing Medway brochure. Include landscape management, fertilizer use, and snow and ice removal.	Businesses, Institutions and Commercial Facilities	DPS: David D'Amico	Continual distribution of brochure at the following locations: Town Hall, Planning Office, ConCom Office, DPS Office; Mailing to top 20% (by parcel size) commercial property owners in Medway.	2018

Brochures/Pamphlets	Sedimentation and erosion control messages	Developers (construction)	Planning Department: Susan Affleck-Childs	Distribution of pamphlet at Planning offices to developers seeking permits through site development process.	2019
Brochures/Pamphlets; Direct Mail	Management of SW from metal roofs (Zone II related); proper maintenance of parking lot surfaces	Industrial Facilities	DPS: David D'Amico	Mail to 100% of industrially zoned parcels.	2019
Electronic messaging boards	Rotating (seasonal) messages on grass clippings and fertilizer management, pet waste management, snow and ice treatments, and septic system management.	Residents	DPS: David D'Amico	Message Boards placed at publicly accessible locations.	2020
Medway Matters monthly digital newsletter	Preventing SSO's through FOG program; highlighting impacts of FOG article	Businesses, Institutions and Commercial Facilities	Communications Depart.: Sandy Johnston	Achieve "open" rate of greater than 50% for edition of newsletter.	2021
Local Public Service Announcements; Medv	Posting of PSA on FB page re: good site maintenance and LID techniques for residential development	Developers (construction)	Communications Dept.: Sandy Johnston	100% response to questions or comments posted on the page in relation to PSA.	2022
Newspaper Articles/Press Releases	Waste management best practices such as covering dumpsters, sweeping regularly, keeping inventory and waste within buildings or protected from SW.	Industrial Facilities	DPS: David D'Amico	Mail to 100% of industrially zoned parcels.	2022



[illegible]

## Notice of Intent (NOI) for coverage under Small MS4 General Permit

### Part III: Stormwater Management Program Summary (continued)

## MCM 2: Public Involvement and Participation

[illegible]

[illegible]

## Notice of Intent (NOI) for coverage under Small MS4 General Permit

### Part III: Stormwater Management Program Summary (continued)

#### MCM 3: Illicit Discharge Detection and Elimination (IDDE)

<b>BMP Categorization</b> (enter your own text to override the drop down menu)	<b>BMP Description</b>	<b>Responsible Department/Parties</b> (enter your own text to override the drop down menu)	<b>Measurable Goal</b> (all text can be overwritten)	<b>Beginning Year of BMP Implementation</b>
SSO inventory	Maintain SSO inventory in accordance with permit conditions	DPS: Stephanie Carlisle	Town has completed requirements of this BMP via IWRMP. Maintain inventory as new information becomes available.	2018
Storm sewer system map	Update map as appropriate during IDDE program completion	GIS Coordinator: Fran Hutton Lee	Map has been updated to meet Phase I mapping requirements of 6/30/20 deadline. Full system map to be completed within 10 years after effective date of permit.	2020
Written IDDE program* (Plan current as of 2014. Updates required documented in 4/5/17 memorandum)	Create written IDDE program	DPS: Stephanie Carlisle	Existing written IDDE program to be updated within 1 year of the effective date of permit and update as required.	2018
Implement revised IDDE program	Implement catchment investigations according to program and permit conditions	DPS HWY: Jack Tucker	Complete 10 years after effective date of permit.	2018
Employee training	Train employees on IDDE implementation	DPS: David D'Amico	Train annually.	2018
Conduct dry weather screening	Conduct in accordance with outfall screening procedure and permit conditions	DPS: David D'Amico	Complete 3 years after effective date of permit.	2019
Conduct wet weather screening	Conduct in accordance with outfall screening procedure	DPS: David D'Amico	Complete 10 years after effective date of permit.	2020
Ongoing screening	Conduct dry weather and wet weather screening (as necessary)	DPS: David D'Amico	Complete ongoing outfall screening upon completion of IDDE program.	2022


## Notice of Intent (NOI) for coverage under Small MS4 General Permit

### Part III: Stormwater Management Program Summary (continued)

#### MCM 4: Construction Site Stormwater Runoff Control

<b>BMP Categorization</b> (enter your own text to override the drop down menu or entered text)	<b>BMP Description</b>	<b>Responsible Department/Parties</b> (enter your own text to override the drop down menu)	<b>Measurable Goal</b> (all text can be overwritten)	<b>Beginning Year of BMP Implementation</b>
Site inspection and enforcement of Erosion and Sediment Control (ESC) measures (Current regulations meet this provision)	Complete written procedures of site inspections and enforcement procedures	Land Disturbance Permit Authority: ConCom, Planning, or Admin. Review team	Maintain current procedures and document 100% of inspections.	2018
Site plan review	Complete written procedures of site plan review and begin implementation	Planning Department: Susan Affleck-Childs	Complete update to existing review procedures (if necessary) within 1 year of the effective date of permit.	2018
Erosion and Sediment Control (Current regulations meet this provision)	Adoption of requirements for construction operators to implement a sediment and erosion control program	Planning Department: Susan Affleck-Childs	Maintain current procedures and document 100% of project close-outs of construction phase controls.	2018
Waste Control (Current regulations meet this provision)	Adoption of requirements to control wastes, including but not limited to, discarded building materials, concrete truck wash out, chemicals, litter, and sanitary wastes	Planning Department: Susan Affleck-Childs	Maintain current procedures.	2018

[illegible]

## Notice of Intent (NOI) for coverage under Small MS4 General Permit

### Part III: Stormwater Management Program Summary (continued)

#### MCM 5: Post-Construction Stormwater Management in New Development and Redevelopment

<b>BMP Categorization</b> (enter your own text to override the drop down menu or entered text)	<b>BMP Description</b>	<b>Responsible Department/Parties</b> (enter your own text to override the drop down menu)	<b>Measurable Goal</b> (all text can be overwritten)	<b>Beginning Year of BMP Implementation</b>
As-built plans for on-site stormwater control (current regulations meet this provision)	The procedures to require submission of as-built drawings and ensure long term operation and maintenance will be a part of the SWMP	Planning Department: Susan Affleck-Childs	Require submission of as-built plans for 100% of completed projects.	2018
Target properties to reduce impervious areas (2018 IWRMP meets this provision)	Identify at least 5 permittee-owned properties that could be modified or retrofitted with BMPs to reduce impervious areas and update annually	DPS: David D'Amico	Analysis complete and properties identified; report annually on status of retrofit-candidate properties.	2022
Allow green infrastructure (current regulations encourage LID per MA Stormwater Management Standards)	Develop a report assessing existing local regulations to determine the feasibility of making green infrastructure practices allowable when appropriate site conditions exist	Planning Department: Susan Affleck-Childs	Complete 4 years after effective date of permit and implement recommendations of report.	2020
Street design and parking lot guidelines	Develop a report assessing requirements that affect the creation of impervious cover. The assessment will help determine if changes to design standards for streets and parking lots can be modified to support low impact design options.	Planning Department: Susan Affleck-Childs	Complete 4 years after effective date of permit and implement recommendations of report.	2020



[illegible]

--	--	--	--	--

## Notice of Intent (NOI) for coverage under Small MS4 General Permit

### Part III: Stormwater Management Program Summary (continued)

#### MCM 6: Municipal Good Housekeeping and Pollution Prevention

<b>BMP Categorization</b> (enter your own text to override the drop down menu or entered text)	<b>BMP Description</b>	<b>Responsible Department/Parties</b> (enter your own text to override the drop down menu)	<b>Measurable Goal</b> (all text can be overwritten)	<b>Beginning Year of BMP Implementation</b>
O&M procedures (2014 O&M plan meets this provision)	Create written O&M procedures including all requirements contained in 2.3.7.a.ii for parks and open spaces, buildings and facilities, and vehicles and equipment	DPS: David D'Amico	2014 O&M Plan meets this requirement; update as necessary for new equipment and protocols (e.g. revised sweeping or CB cleaning).	2018
Inventory all permittee-owned parks and open spaces, buildings and facilities, and vehicles and equipment (2014 O&M plan meets this provision)	Create inventory	DPS: David D'Amico	2014 O&M Plan meets this requirement; implement annually.	2018
Infrastructure O&M (2014 O&M plan meets most of this provision)	Establish and implement program for repair and rehabilitation of MS4 infrastructure	DPS: David D'Amico	Update plan within 2 years after effective date of permit.	2019
Stormwater Pollution Prevention Plan (SWPPP)	Create SWPPPs for maintenance garages, transfer stations, and other waste-handling facilities	DPS: David D'Amico	Complete and implement 2 years after effective date of permit.	2019
Catch basin cleaning	Establish schedule for catch basin cleaning such that each catch basin is no more than 50% full and clean catch basins on that schedule	DPS: HWY: Jack Tucker	Clean catch basins on established schedule and report number of catch basins cleaned and volume of material moved annually.	2018
Street sweeping program	Sweep all streets and permittee-owned parking lots in accordance with permit conditions	DPS HWY: Jack Tucker	Sweep all streets and permittee-owned parking lots once per year in the spring.	2018
Road salt use optimization program	Establish and implement a program to minimize the use of road salt	DPS: David D'Amico	Implement salt use optimization during deicing season.	2018

[illegible]

## Notice of Intent (NOI) for coverage under Small MS4 General Permit

### Part III: Stormwater Management Program Summary (continued)

### Actions for Meeting Total Maximum Daily Load (TMDL) Requirements

Use the drop-down menus to select the applicable TMDL, action description to meet the TMDL requirements, and the responsible department/parties. If no options are applicable, or more than one, **enter your own text to override drop-down menus.**

[illegible]

## Notice of Intent (NOI) for coverage under Small MS4 General Permit

### Part III: Stormwater Management Program Summary (continued)

### Actions for Meeting Requirements Related to Water Quality Limited Waters

Use the drop-down menus to select the pollutant causing the water quality limitation and enter the waterbody ID(s) experiencing excursions above water quality standards for that pollutant. Choose the action description from the dropdown menu and indicate the responsible party. If no options are applicable, or more than one, **enter your own text to override drop-down menus.**

[illegible]

## Notice of Intent (NOI) for coverage under Small MS4 General Permit

Page 21 of 21

### Part V: Certification

*I certify under penalty of law that this document and all attachments were prepared under my direction or supervision in accordance with a system designed to assure that qualified personnel properly gather and evaluate the information submitted. Based on my inquiry of the person or persons who manage the system, or those persons directly responsible for gathering the information, I certify that the information submitted is, to the best of my knowledge and belief, true, accurate, and complete. I am aware that there are significant penalties for submitting false information, including the possibility of fine and imprisonment for knowing violations.*

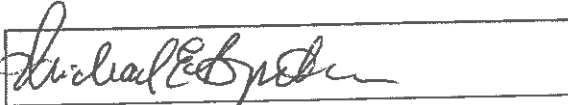
Name:

Mr. Michael E. Boynton

Title:

Town Administrator

Signature:



Date:

9.27.2018

[To be signed according to Appendix B, Subparagraph B.11, Standard Conditions]

Note: When prompted during signing, save the document under a new file name

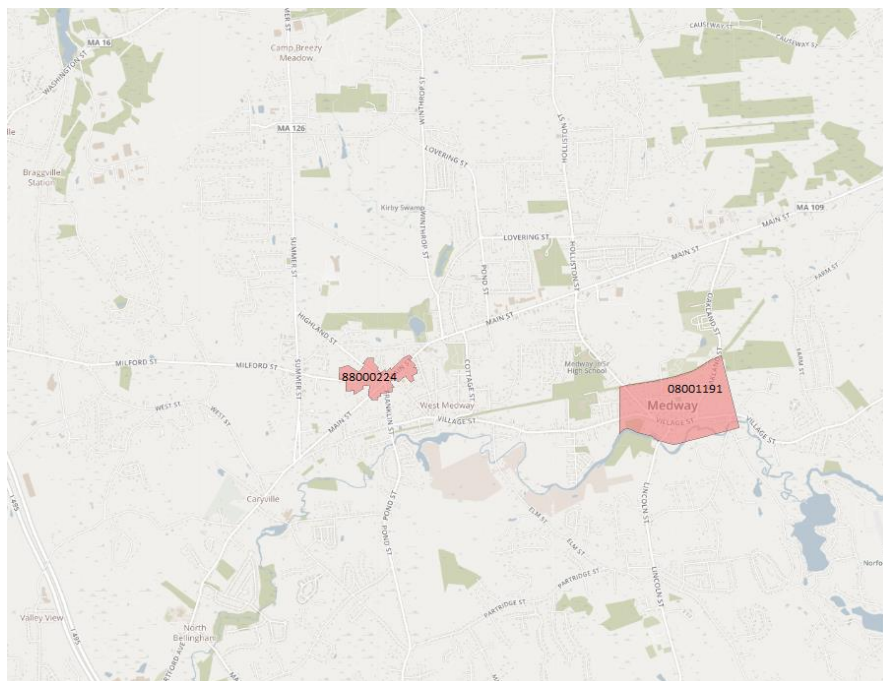
## Medway NOI Screenings

### Historic Properties:

The Town's MS4 is an existing system covered under the 2003 permit; therefore the Town meets criteria A of Appendix D to the small MS4 General Permit and went through consultation with the State Historic Preservation Officer at that time.

The following is a list of Federally Listed Historic Properties in Medway, MA

- Rabbit Hill Historic District (#88000224)
- Medway Village Historic District (#08001191)



### Endangered Species:

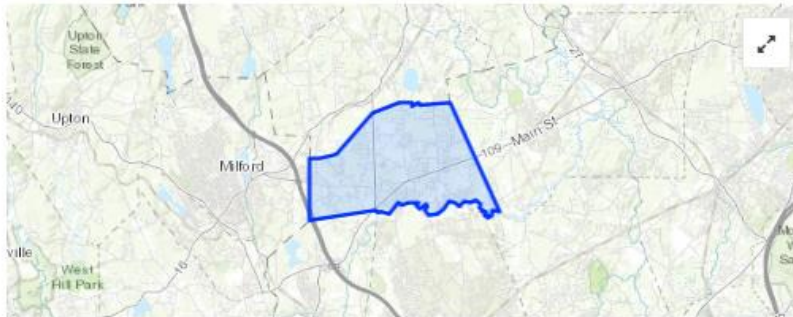
The results from the U.S. Fish and Wildlife IPaC system determined that Medway's MS4 area contains the Northern Long-eared Bat. IPaC results and a NHESP Habitats map from the MA GIS database are provided below. Using the ESA Eligibility criteria as referenced in Appendix C of the MA Small MS4 General Permit, Medway is eligible under criterion C. Based on our review, there is no discharge related activities involving the removal of trees, i.e. the Northern Long-eared Bat's habitat, therefore the Town's MS4 system does not affect any federally threatened or endangered listed species.



# Medway Endangered Species



No description provided.



LOCATION Middlesex, Norfolk and Worcester counties, Massachusetts

CREATED June 19, 2018

1 MEMBER

1 DOCUMENT

## Resources

This project potentially impacts 11 resources managed or regulated by the U.S. Fish and Wildlife Service.

- 1 endangered species
- 9 migratory birds
- Refuge and fish hatchery information is not available at this time
- Known wetlands

[SEE RESOURCES](#)

# Medway Endangered Species Middlesex, Norfolk and Worcester counties, Massachusetts

PROJECT HOME

REGULATORY REVIEW

LOCAL OFFICE NEW ENGLAND ESFO ▾

[Project home](#) / Resources

## Resources

ENDANGERED SPECIES 1

MIGRATORY BIRDS 9

FACILITIES !

WETLANDS ✓

[PRINT RESOURCE LIST](#)

## Endangered species

Listed species (1) and their critical habitats are managed by the [Ecological Services Program](#) of the U.S. Fish and Wildlife Service (USFWS) and the fisheries division of the National Oceanic and Atmospheric Administration (NOAA Fisheries (2)).

Species and critical habitats under the sole responsibility of NOAA Fisheries are not shown on this list. Please contact [NOAA Fisheries](#) for [species under their jurisdiction](#).

Additional information on endangered species data is provided [below](#).

The following species are potentially affected by activities in this location:

THUMBNAILS LIST

## Mammals



## Critical habitats

Potential effects to critical habitat(s) in this location must be analyzed along with the endangered species themselves.

THERE ARE NO CRITICAL HABITATS AT THIS LOCATION.

- > What does IPaC use to generate the list of endangered species potentially occurring in my specified location?
- > Do these lists represent all species to be considered at this location?
- > If this resource list is empty, do I still need to coordinate with the USFWS?
- > What is an 'official species list' and why would I need one?