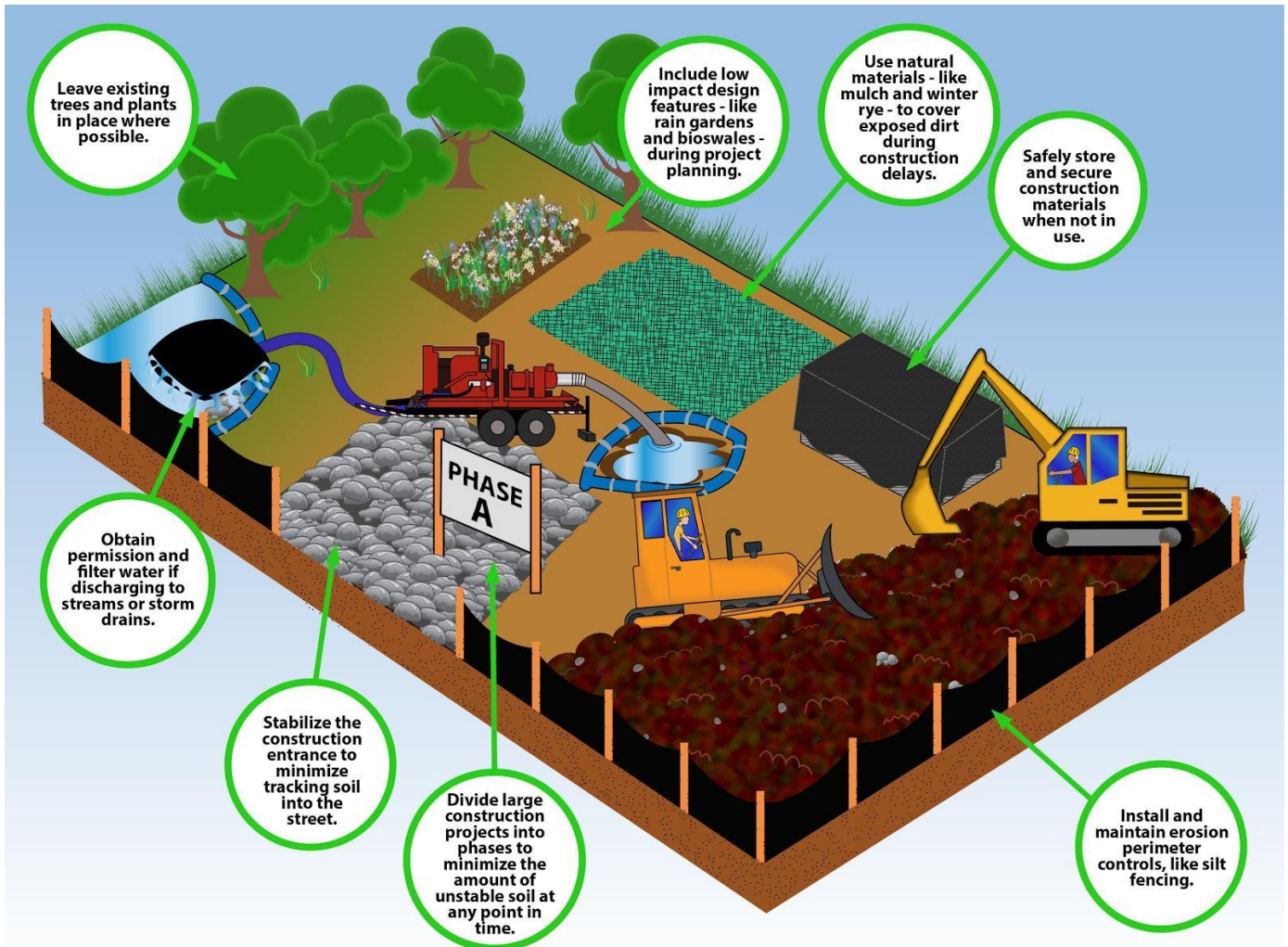




## Plan Ahead to Prevent Pollution: Tips to Reduce Stormwater Runoff During Construction



Contact EPA and your municipality to make sure you have the proper permits before beginning construction.

Dirt and pollutants that run off construction sites end up in our lakes, rivers, and streams.

Please choose practices that prevent erosion from happening in the first place.

Construction companies can do their part to keep Massachusetts' waterways clean.

Find more tips like these at [www.ThinkBlueMassachusetts.org](http://www.ThinkBlueMassachusetts.org).

