

# VOLTA

## CONSTRUCTION PROJECT: Medway, MA

|                     |  |                     |  |
|---------------------|--|---------------------|--|
| Site Address:       | 65 Main Street   | Date Completed:     |  |
| VOLTA Contact:      | Paul Zagami  | Contractor Contact: | Brian Sullivan   |
| VOLTA Email:        | <a href="mailto:paulzagami@voltacharging.com">paulzagami@voltacharging.com</a> | Contractor Email:   | <a href="mailto:briansullivan@service.com">briansullivan@service.com</a> |
| Station 01 Azimuth: | 35 NE  | Station #01 S/N:    | P1903VKDN55M513  |

### STATION #1 INSTALL PHOTO CHECKLIST:

Station #1 Placement Overall (showing Background reference):



Station Front & Back:



Station Serial Number & CSA sticker:



SUBJECT: ELECTRIC VEHICLE CHARGING SYSTEM  
MODEL: K1CSDIGT56SUB

SERIAL: P1003VK0N6BM613

CIRCUIT 1: 120 VAC @ 60Hz @ 10 A @ 1 Phase

CIRCUIT 2: 208-220 VAC @ 60Hz @ 30 A @ 1 Phase

## STATION #2 INSTALL PHOTO CHECKLIST:

Station 02 Azimuth:

0 N

Station #02 S/N:

P1903VKDN55M516

Station #2 Placement Overall (showing Background reference):



Station Front & Back:





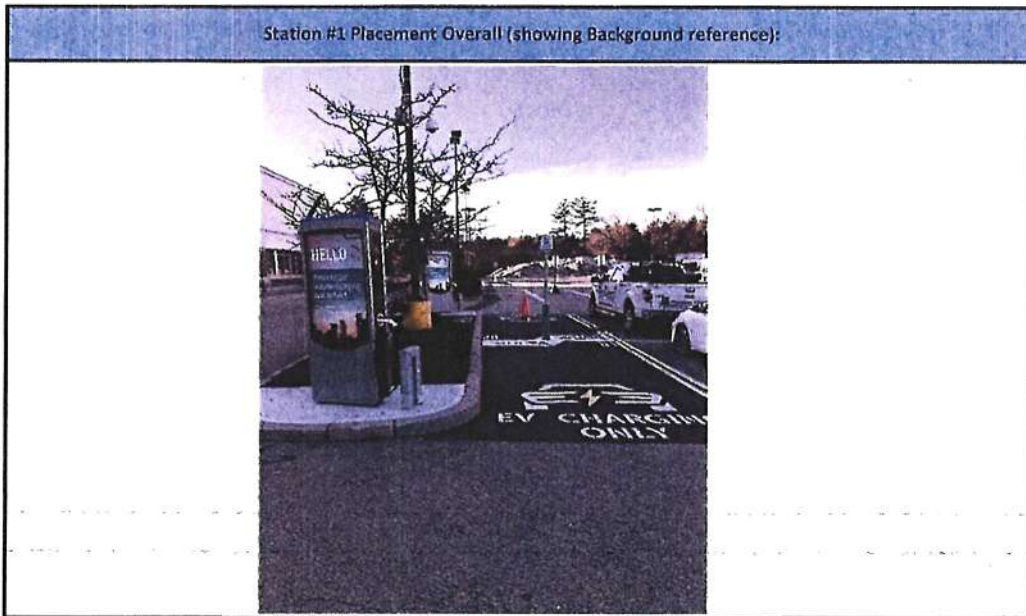
# VOLTA

## CONSTRUCTION PROJECT: Medway, MA

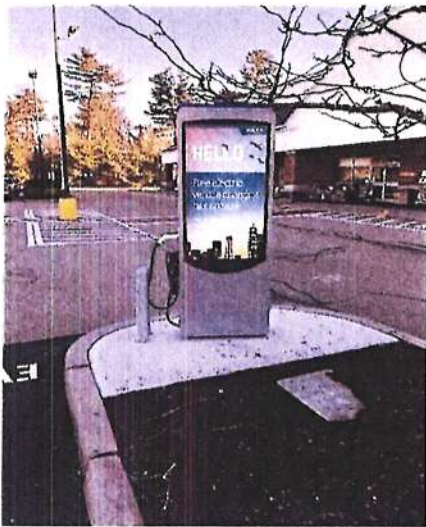
|                     |                              |                     |                           |
|---------------------|------------------------------|---------------------|---------------------------|
| Site Address:       | 65 Main Street               | Date Completed:     |                           |
| VOLTA Contact:      | Paul Zagami                  | Contractor Contact: | Brian Sullivan            |
| VOLTA Email:        | paulzagami@voltacharging.com | Contractor Email:   | briansullivan@service.com |
| Station 01 Azimuth: | 35 NE                        | Station #01 S/N:    | P1903VKDN55M513           |

### STATION #1 INSTALL PHOTO CHECKLIST:

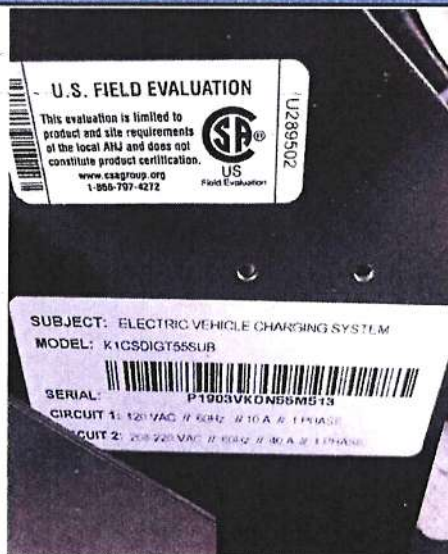
Station #1 Placement Overall (showing Background reference):



Station Front & Back:



Station Serial Number & CSA sticker:



## STATION #2 INSTALL PHOTO CHECKLIST:

Station 02 Azimuth:

0 N

Station #02 S/N:

P1903VKDN55M516

Station #2 Placement Overall (showing Background reference):



Station Front & Back:





## VOLTA - STATION OVERVIEW

Volta provides free, turnkey electric vehicle charging services. This modern amenity attracts the community as Volta's charging network draws 3x the number of visits to the property as compared to other charging networks.\* Our stations have been installed in over 140 different municipalities across the U.S.

\*Finn Research

### VOLTA STATION BENEFITS

- Installation, equipment and maintenance is paid by Volta
- Charges all electric vehicles
- Electricity to charge community members' electric vehicle is free
- Free electricity supported through third party content on displays
- Charges up to 2 hours free with software that discourages abuse
- Volta stations are occupied 80% of the retail day
- Volta has provided over 60 million miles of free charging, replaced approximately 2.3 million gallons of gasoline and eliminated over 45 million pounds of CO2

### CHARGING UNIT INFORMATION

Single charging units

Size: H 86.25" x W 32.5" x D 12.75"

Display Size: H 48" x W 27"

Cord length: 20'

Power Type: 208/240VAC, 40A, 10 kW max

Plug: SAE J1772 compliant connector

Listings: UL® E354307

### POWER REQUIREMENTS

Charging Unit: 50A/2P 208/240V breaker

Charging Aux Power: 20A/1P 120V breaker

Cell signal or LAN access required

### INSTALLATION REQUIREMENTS

Wire Diameter: #6 AWG\*

Larger for longer conduit runs

Conduit Diameter: 2"

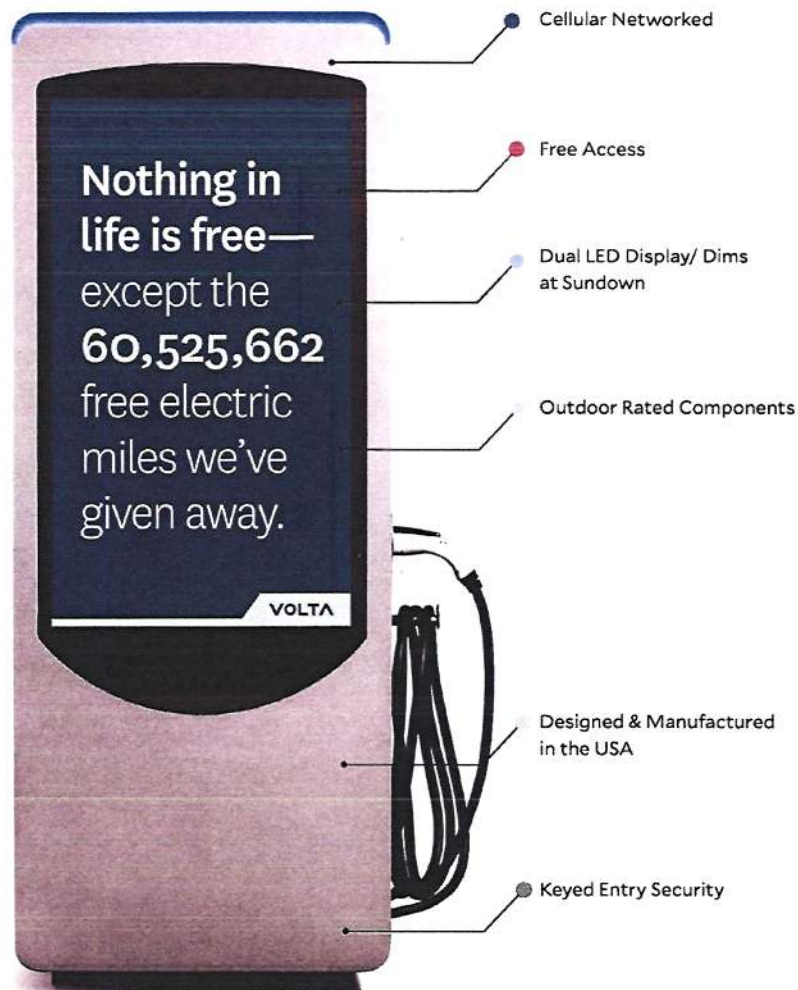
Two Volta stations can share one 2" conduit

Volta's mission is simple: Accelerate electric vehicle adoption by building cutting-edge, free and inspiring vehicle charging networks.



Above is a typical Volta installation showing one of our charging stations in a parking area.

**VOLTA**



**VOLTA**

155 DE HARO STREET  
SAN FRANCISCO, CA 94103

|  |  |  |  |
|--|--|--|--|
|  |  |  |  |
|  |  |  |  |
|  |  |  |  |

| REV | DATE     | DESCRIPTION | BY  |
|-----|----------|-------------|-----|
| 1   | 08/10/19 | CON         | SPS |
| 2   | 08/10/19 | CON         | SPS |

ISSUE DATE

ISSUED FOR  
PERMIT

IF A VIOLATION OF ANY FEDERAL PERSON  
UNLAWFUL ACTING UNDER THE DIRECTION  
OF A LICENSED PROFESSIONAL  
ENGINEER TO ALTER THIS DOCUMENT

SHEET TITLE

SHEET NUMBER

VOLTA HEADQUARTERS: 155 De Haro St. San Francisco, CA 94103 WEBSITE: [voltacharging.com](http://voltacharging.com)