

Tonight's Agenda

- Informal Viewing of Maps 6:30-7:00 PM
- Introduction by The Meadowlands Initiative
- Presentation of Maps by BETA Group, Inc.
 - Regional
 - Trail Maps: Bellingham, Medway, Franklin, Trail Design: Precedent/Inspirational Images
- Questions and Answers, Informal Discussion

Charles River Meadowlands Initiative

Charles River Meadowlands Initiative

The towns of Bellingham, Franklin, and Medway are host to more than 500 acres of land protected by the US Army Corps of Engineers (USACE) as part of the Charles River Natural Valley flood control project.

Charles River Meadowlands Initiative is an effort among citizens and local officials to work together and to work with Federal and State officials, to improve access to and management of this beautiful natural resource.

<https://www.charlesrivermeadowlands.org>

Purpose of this Effort

To increase public environmental awareness and provide opportunities for connectivity and passive recreation within the area.

Scope includes :

- Assess USACE, Municipal, Conservation and Private lands environmental and recreational resources
- Assess access and linkages within the site and to Town features
- Provide concepts for potential trails including visual images of trail and boardwalk materials, signage and amenities
- Provide phased priority for feasible improvements
- Public meetings, one in each town. Recorded and incorporated comments
- Provided a final Summary Report

Charles River Meadowlands Initiative

Project Area Map

- Federal and State Land
- Municipal and Conservation Land
- Private Land
- River
- Town Boundary

Charles River Meadowlands Initiative



Access and Linkages

- Access Points
- Public Parking
- Potential Parking
- Existing Kayak Launch
- Historic Points
- Town Centers
- Schools

Charles River Meadowlands Initiative



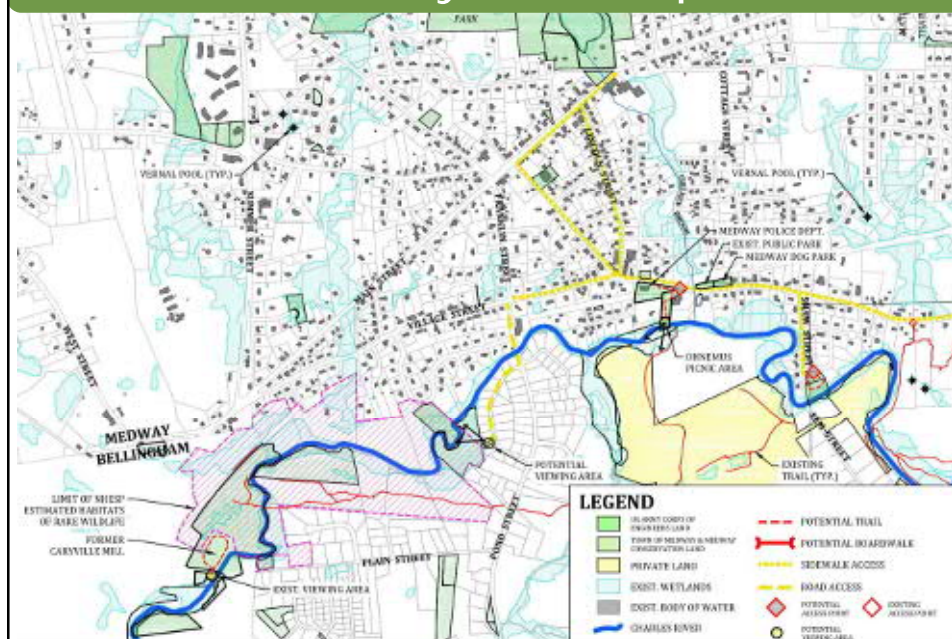
Resource Mapping

- Wetlands
- Flood Plains
- Vernal Pool
- Rare Species Habitat

Charles River Meadowlands Initiative



Medway Trail Map I



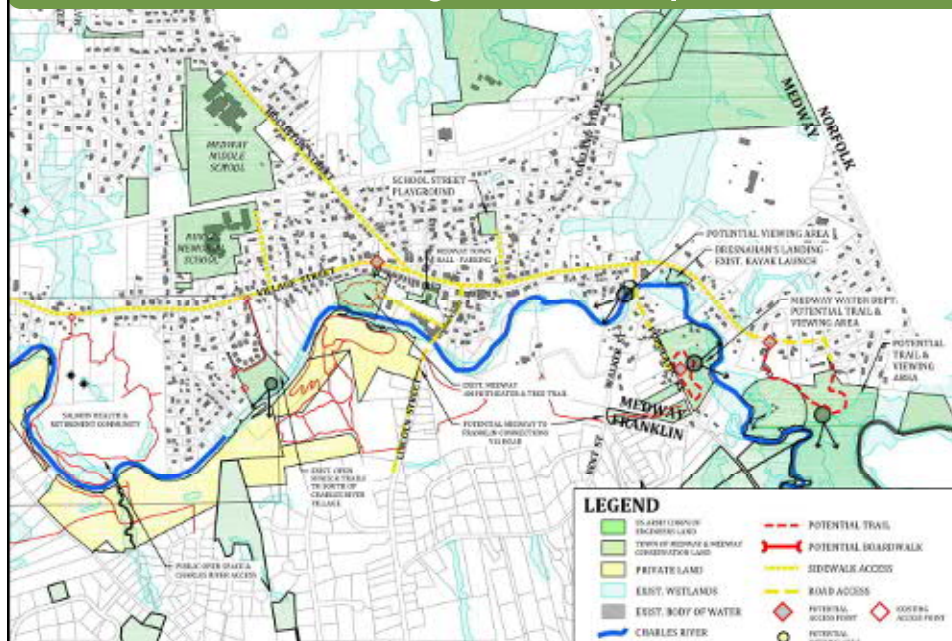
Medway Trail Map I Area Photos



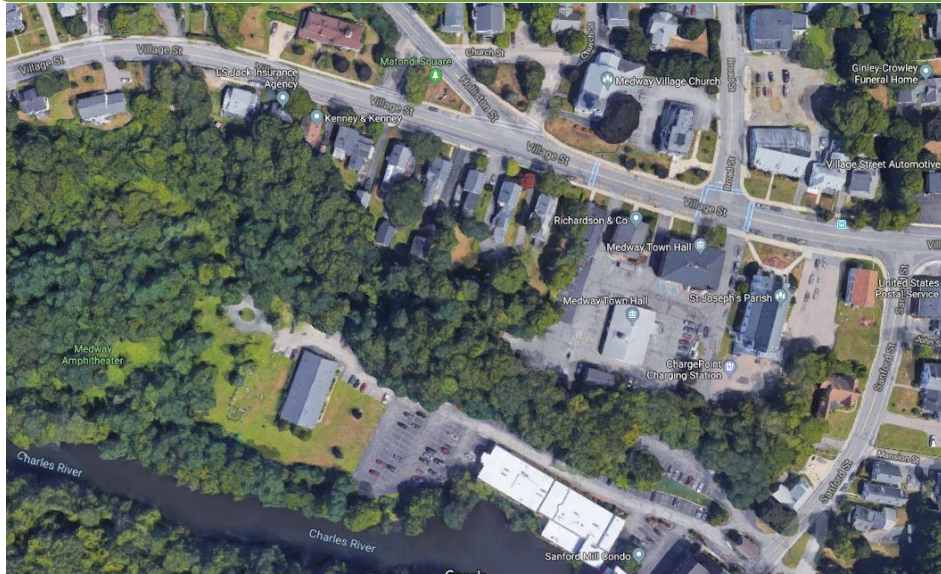
- Improve access to Ohnemus picnic area
- Access and trail at Shaw Street



Medway Trail Map II

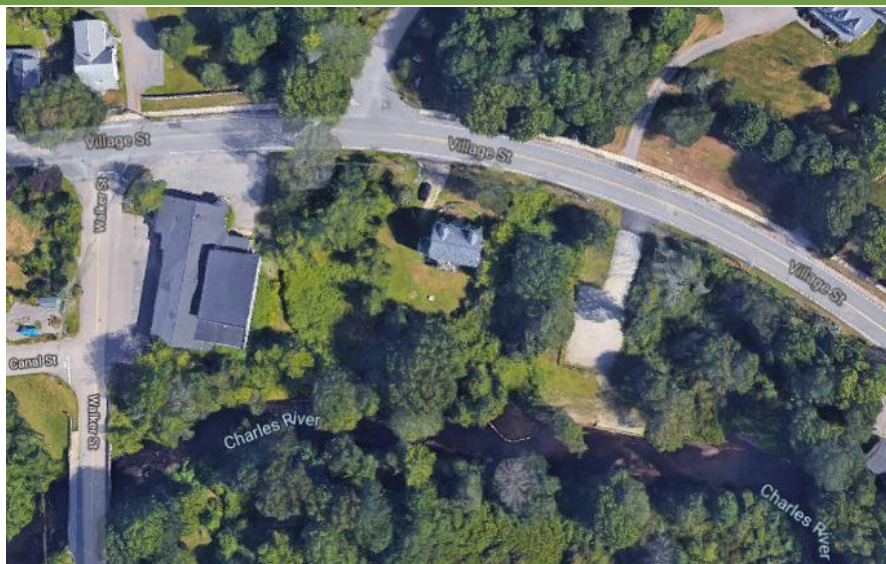


Medway Trail Map II Area Photos



Access from Village Street to the Amphitheater

Medway Trail Map II Area Photos



Improvements to Bresnahan's Landing

Medway Trail Map II Area Photos

Town land at Village St.



Town land at Populatic St.

Bellingham Trail Map I

Mechanic St. to I-495

- Access and trail at Town Hall
- Crossing at MBTA
- Crossing at Charles River
- Connect to High St. Field Trails
- Continue adjacent to MBTA
- Connect north to Conservation land at High Street
- Access at High St.
- Potential parking and Kayak Access at High St.



Bellingham Trail Map I Photos



Town Hall potential trail and connections



Potential connections to High Street Fields

Bellingham Trail Map I Photos

Conservation land at
High street.
Possible Phase I.



Bellingham Trail Map II

I-495 to Pearl Street

- Trail on Conservation Land with access at Maple Street
- Trail between Mall and Maple Street
- Access and trail at Caryville Mill site. Opportunity for interpretation and riverfront trail or park.
- Note habitat of rare wildlife zone



Bellingham Trail Map II Photos



Potential Maple Street Access and trail connections east and west of Mine Brook



Bellingham Trail Map II Photos

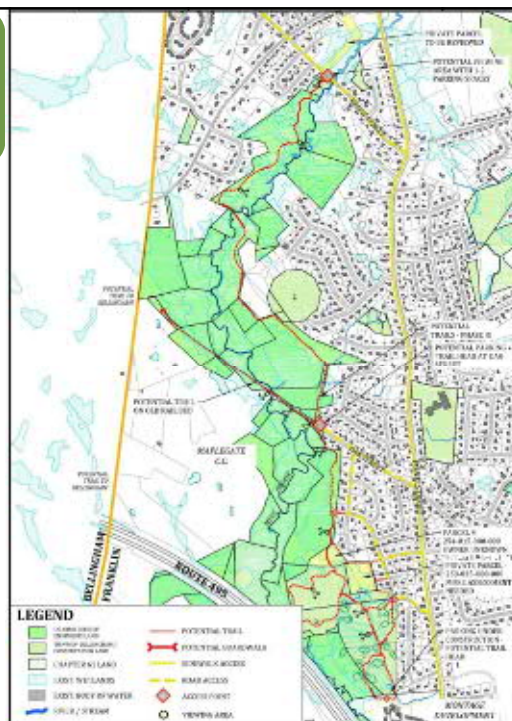


Caryville Mill site: Potential access, viewing area and riverfront trail. Opportunity for interpretation and park

Franklin Trail Map I

North of I-495 to north of Beech Street

- Phase I Montage to White Ave.
- Phase II White Ave. to Oak St.
- Phase III Oak Street to north of Beech St.



Franklin Trail Map I Area Photos



View from trail at Oak Street

Franklin Trail Map I Area Photos



View from Beech St. potential viewing area

Franklin Phase I Trail

Montage to White Ave.

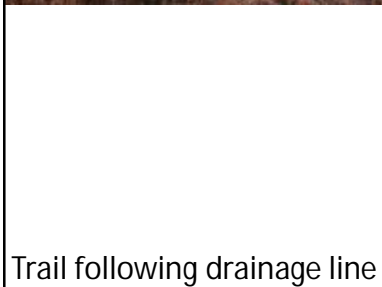
- Parking at Montage Development
- Main trail follows existing drainage line
- Lower loop to the west
- Views to meadow
- Upper Loop to White Ave.
- Access at White Ave.



Phase I Trail Area Photos



Phase I viewing area



Trail following drainage line



Trail Types

Overlook Pier



Pervious Pathway



Boardwalk

Trail Layout



- Follow Existing Trails when possible
- Various Widths
- Layout based on existing trees, wetland resources, grades, etc.

Charles River Meadowlands Initiative

Trail Materials



Dense Graded Crushed Stone
ADA Compliant



Mown native grasses



Woodland path (pine)

Boardwalk

Boardwalk where cross
wetlands



Americans with Disabilities Act

ADA and Multi-Generational



Charles River Meadowlands Initiative

Signage



Mile marker and
interpretive signs



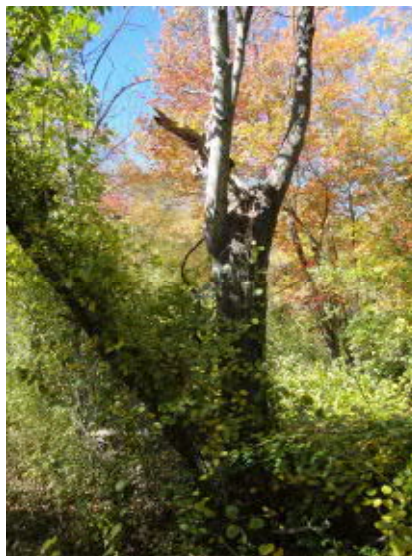
Entry Sign/ Kiosk with map

Habitat



Maintenance and Management

- Trash, trail maintenance, policing, manage invasive/ unwanted vegetation
- Management Plan -
 - Required for projects on USACE lands
 - Work with each town for municipal and conservation properties
- Look at precedent examples for management strategies that work



Community Forum Dates

- Thursday, April 11, 2019 at 6:30 PM
Franklin Fire Department, 600 King St.
- Tuesday, April 16, 2019 at 6:30 PM
Bellingham Town Hall, 10 Mechanic Street
- Monday, April 29, 2019 at 6:30 PM
Thayer Homestead, 2B Oak Street, Medway

Charles River Meadowlands Initiative

What's Next?

- Meet with USACE and Fish and Wildlife
- Update maps based on comments from meetings
- Identify potential trails to pursue as projects
- Summary Report
- Seek funds and grants
 - Community Preservation Act (CPA) Funding
 - Parc Grant Program
 - Mass DEP Section 319 Grant collaboration
 - Mass Trails Program

Questions and Answers

Thank You for Being Here!

