

⑦ NORTH ELEVATION - EXISTING  
1/8" = 1'-0"



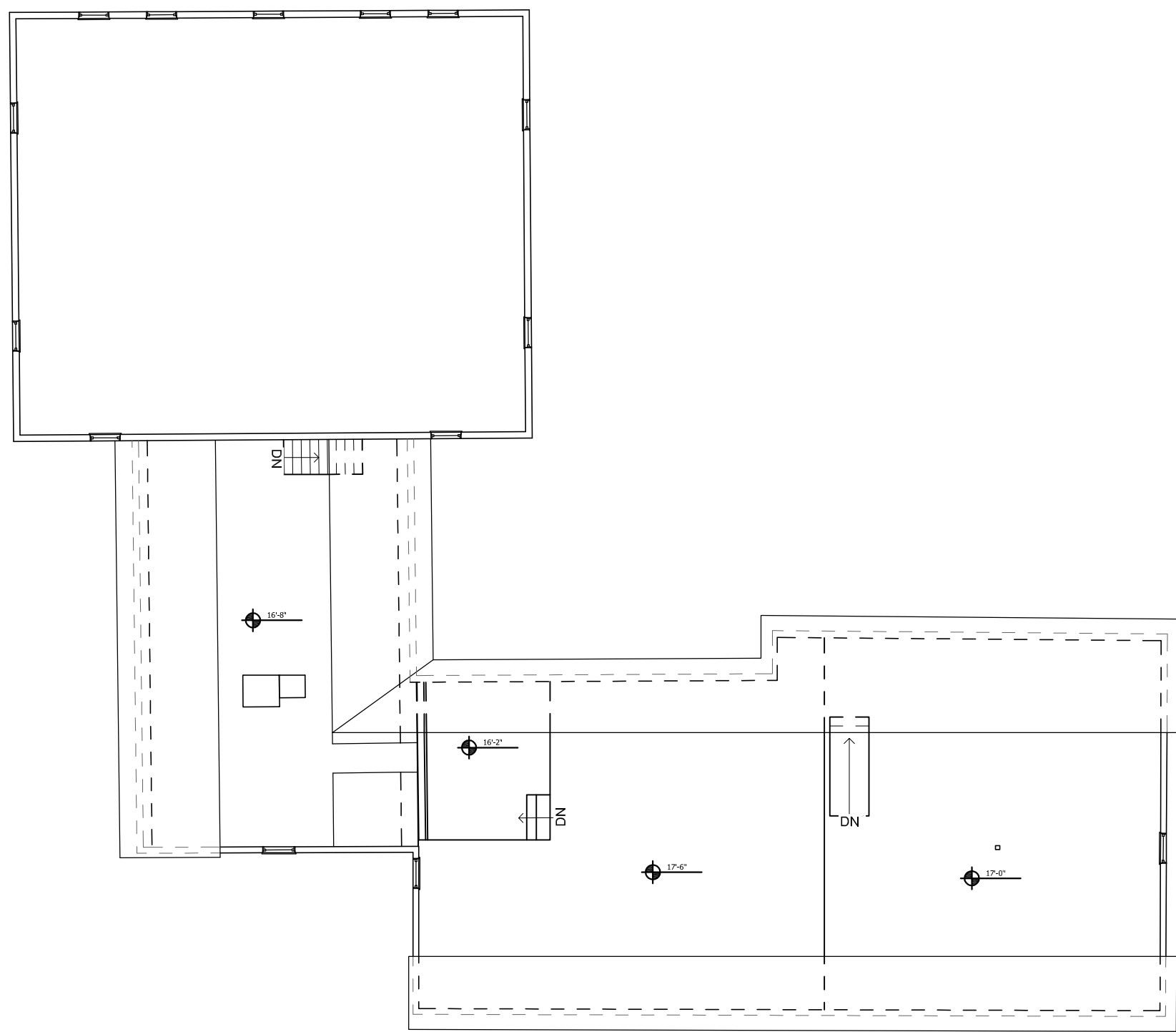
⑥ EAST ELEVATION - EXISTING  
1/8" = 1'-0"



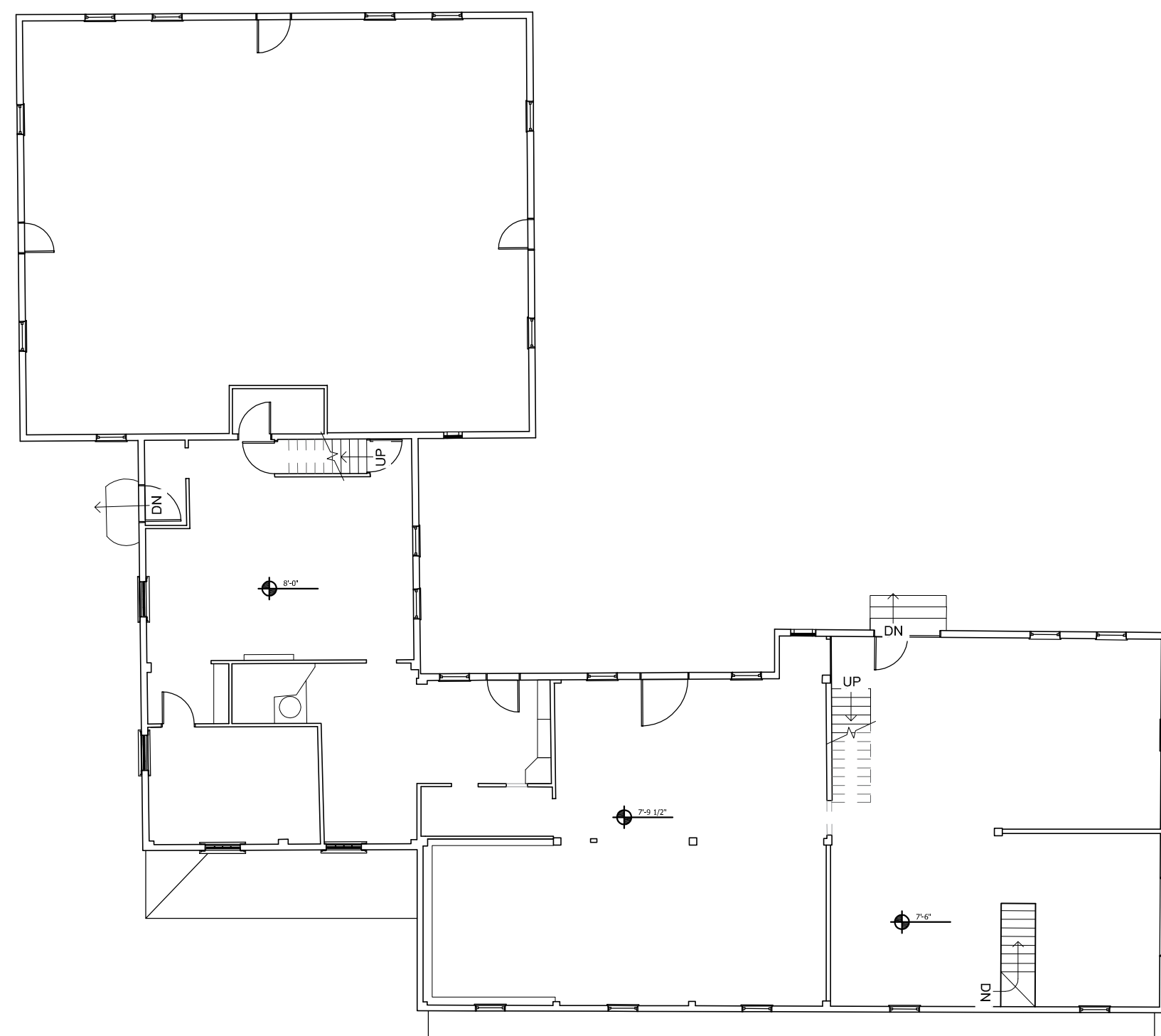
⑤ SOUTH ELEVATION - EXISTING  
1/8" = 1'-0"



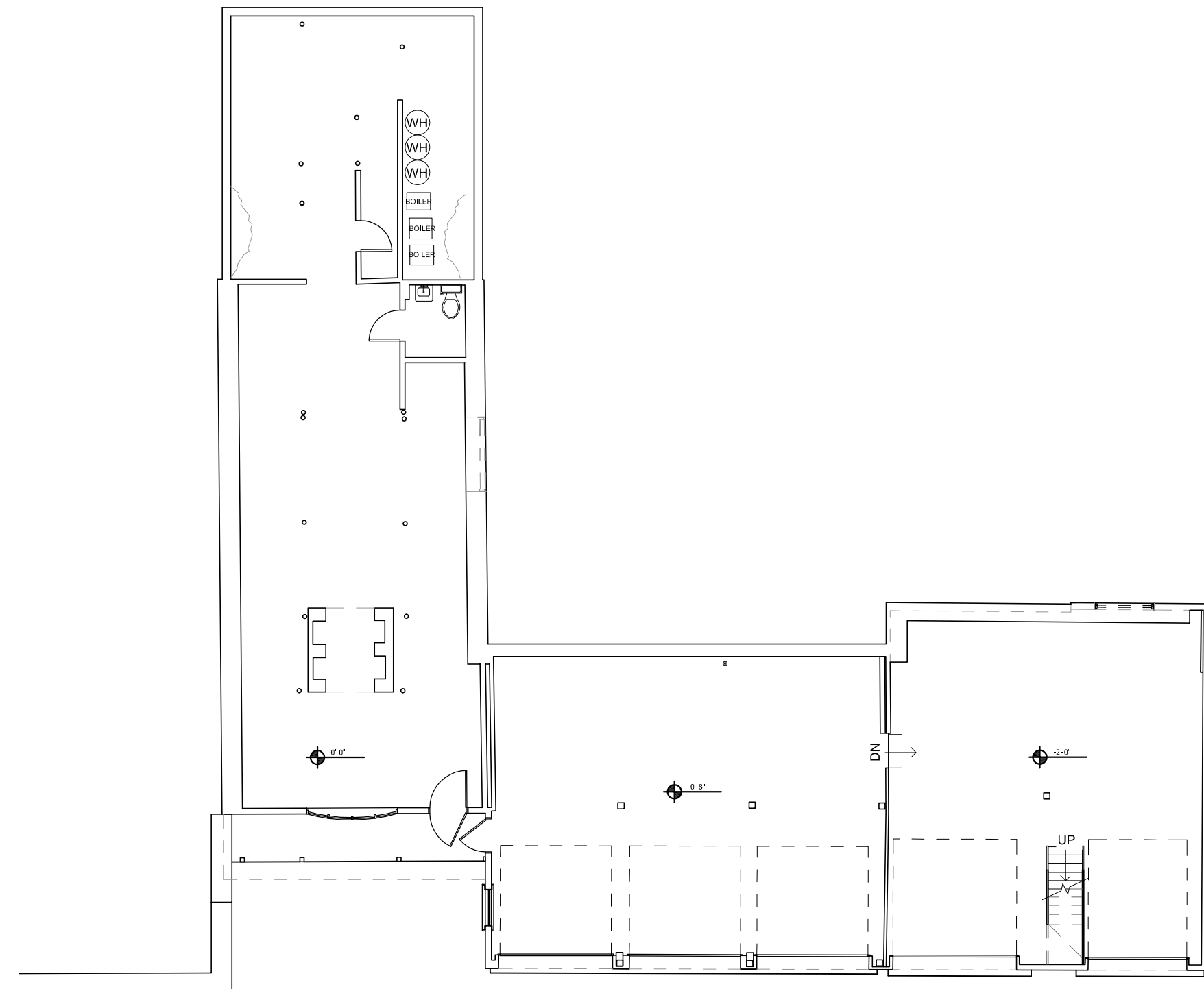
④ WEST ELEVATION - EXISTING  
1/8" = 1'-0"



③ THIRD FLOOR PLAN - EXISTING  
3/32" = 1'-0"



② SECOND FLOOR PLAN - EXISTING  
3/32" = 1'-0"



① FIRST FLOOR PLAN - EXISTING  
3/32" = 1'-0"

REVISIONS

DONAHUE Architects inc.

21 MCGRATH HIGHWAY, QUINCY, MASS. 02169  
Phone: 1-617-479-4122

MEDWAY APARTMENT EXISTING CONDITIONS

7 STANFORD STREET  
MEDWAY, MA 02053

EXISTING ELEVATIONS

Drawn by: TAS  
Reviewed by: BD  
Date: 1/23/2023  
Scale: AS NOTED



A100



① NEW GROUND FLOOR PLAN UNIT 1  
1/4" = 1'-0"

REVISIONS	

DONAHUE Architects, inc.  
21 MCGRATH HIGHWAY, QUINCY, MASS. 02169  
Phone: 1-617-479-4122

APARTMENT RENOVATIONS  
7 Sanford St, Medway, MA 02053

LOWER FLOOR PLAN

Drawn by:	TAS
Date:	10.07.2022
Scale:	AS NOTED

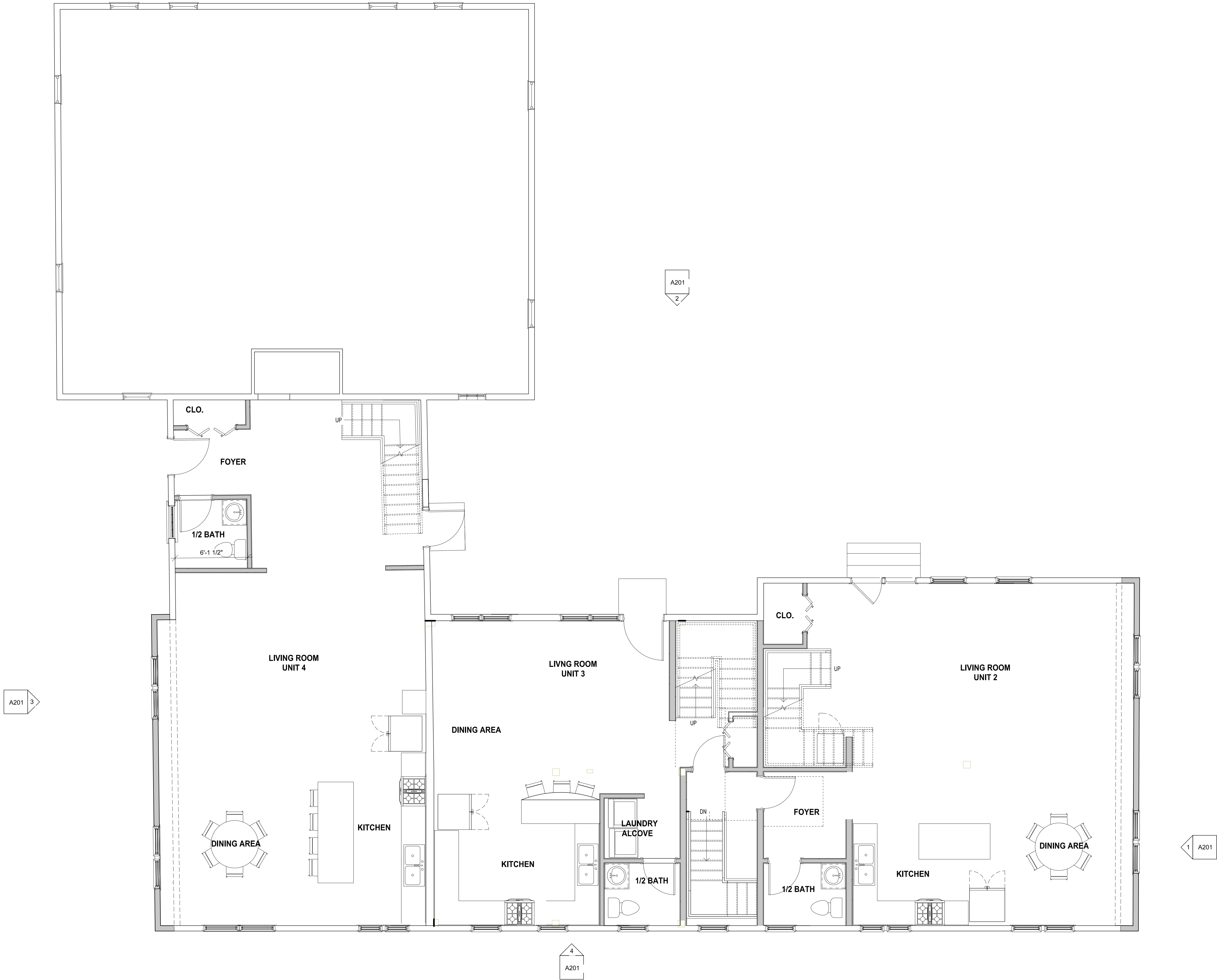


Drawing Number:

A101

7/14/2022 9:25:16 AM





① NEW LEVEL 2 FLOOR PLAN - UNITS 2,3, & 4  
1/4" = 1'-0"

REVISIONS	

**DONAHUE Architects, inc.**  
21 MCGRATH HIGHWAY, QUINCY, MASS. 02169  
Phone: 1-617-479-4122

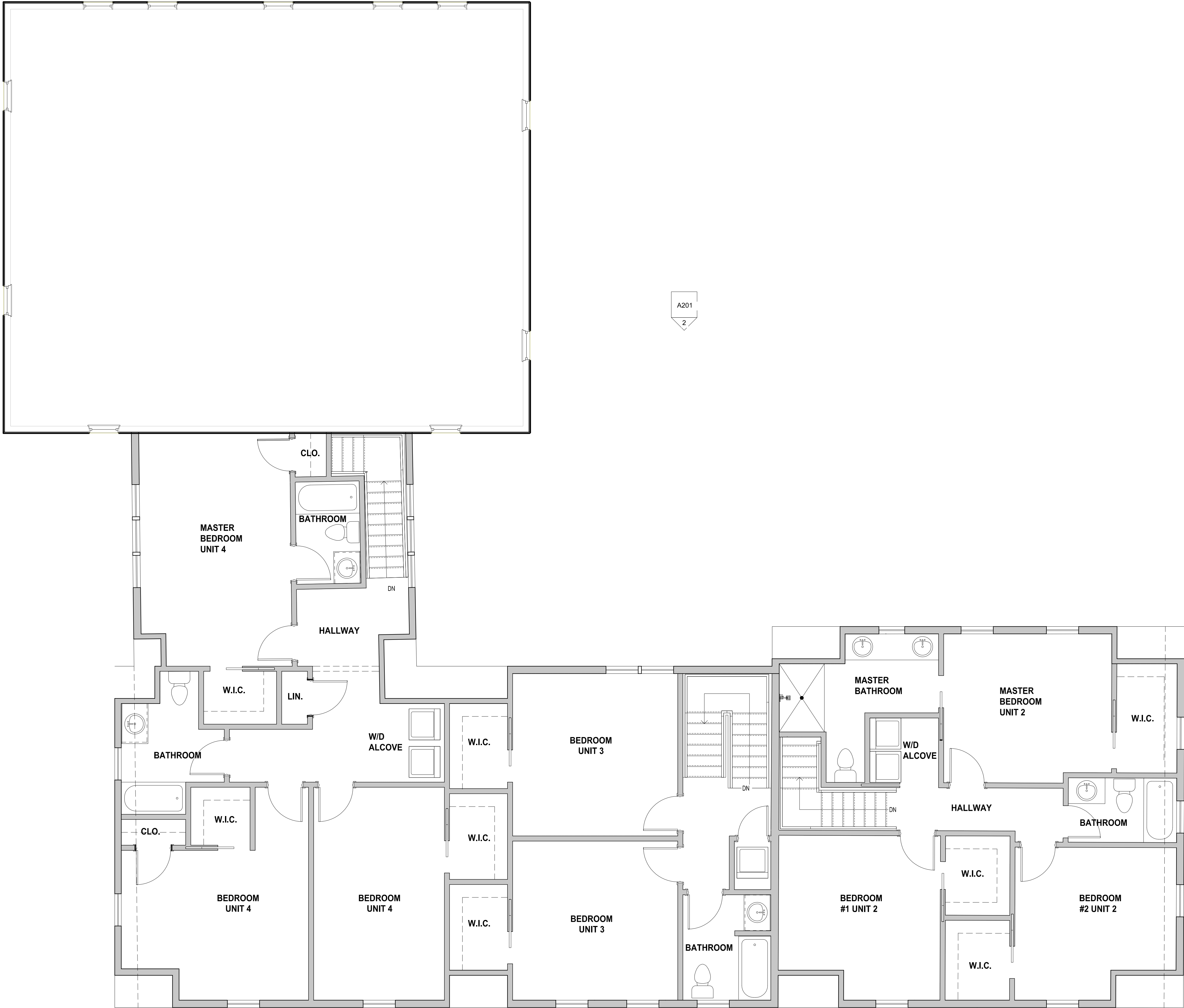
**APARTMENT RENOVATIONS**  
7 Sanford St, Medway, MA 02053  
**LEVEL 2 FLOOR PLAN**

Drawn by: TAS  
Date: 10.07.2022  
Scale: AS NOTED



Drawing Number:  
**A102**

7/14/2022 9:25:19 AM



① LEVEL 3 NEW FLOOR PLAN UNITS 2,3, & 4  
1/4" = 1'-0"

PROGRESS SET

REVISIONS

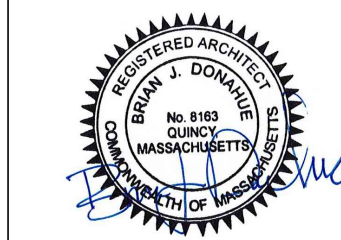
**DONAHUE Architects, inc.**

21 MCGOWAN HIGHWAY, QUINCY, MASS. 02169  
Phone: 1-617-479-4122

APARTMENT RENOVATIONS  
7 Sanford St, Medway, MA 02053

LEVEL 3 FLOOR PLAN

Drawn by: TAS  
Date: 10.07.2022  
Scale: AS NOTED



Drawing Number:

**A103**

7/14/2022 9:25:21 AM



① SOUTH ELEVATION  
1/4" = 1'-0"



② NORTH ELEVATION  
1/4" = 1'-0"

REVISIONS

**DONAHUE Architects, inc.**

21 MCGRATH HIGHWAY, QUINCY, MASS. 02169  
Phone: 1-617-479-4122

APARTMENT RENOVATIONS

7 Sanford St, Medway, MA 02053

**SOUTH & NORTH ELEVATIONS**

Drawn by:

TAS

Date:

10.07.2022

Scale:

AS NOTED



Drawing Number:

**A200**

7/14/2022 9:25:21 AM

PROGRESS SET



③ EAST ELEVATION  
1/4" = 1'-0"



④ WEST ELEVATION  
1/4" = 1'-0"

REVISIONS

**DONAHUE Architects, inc.**

21 MCGRATH HIGHWAY, QUINCY, MASS. 02169  
Phone: 1-617-479-4122

APARTMENT RENOVATIONS

7 Sanford St, Medway, MA 02053

**EAST & WEST ELEVATIONS**

Drawn by:

TAS

Date:

10.07.2022

Scale:

AS NOTED



Drawing Number:

**A201**

7/14/2022 9:25:21 AM



RENDERED VIEWS



REVISIONS

DONAHUE Architects, inc.

21 MCGRATH HIGHWAY, QUINCY, MASS. 02169  
Phone: 1-617-479-4122

APARTMENT RENOVATIONS

7 Sanford St, Medway, MA 02053

RENDERED VIEWS

Drawn by:

TAS

Date:

10.07.2022

Scale:

AS NOTED



Drawing Number:

A202

7/14/2022 9:25:16 AM