

Town of Medway, MA Zoning Map

Zoning District

- AR-I Agricultural-Residential I
- AR-II Agricultural-Residential II
- BI Business-Industrial
- C-I Commercial I
- C-III Commercial III
- C-IV Commercial IV
- C-V Commercial V
- IND-I Industrial I
- IND-II Industrial II
- IND-III Industrial III
- AUOD Adaptive Use Overlay District
- Medway Mill Conversion Subdistrict
- Multifamily Housing Overlay District
- Groundwater Protection District

Other Features

- Medway Parcel Outlines

ZONE	Minimum lot size (sq ft)	Minimum frontage (ft)	Setbacks: front, side, rear (ft)
AR-I	44,000	180	35, 15, 15
AR-II	22,500	150	35, 15, 15
BI	20,000	100	35, 15, 15
C-I	20,000	100	50, 25, 25
C-III	20,000	100	35, 15, 15
C-IV	20,000	100	35, 15, 15
C-V	20,000	100	50, 15, 15
IND-I	20,000	100	30, 20, 30
IND-II	20,000	100	30, 20, 30
IND-III	40,000	100	30, 20, 30

MULTIFAMILY HOUSING OVERLAY DISTRICT

In this area a multifamily dwelling, apartment house, or multifamily development may be authorized by special permit from the Planning and Economic Development Board.

ARCPUD

Adult Retirement Community Planned Unit Development
Minimum of 10 Acres in AR-I or AR-II Zoning District
40% of the land set aside and maintained as open space
50% of open space land set aside permanently as protected open space in perpetuity.

OSRD

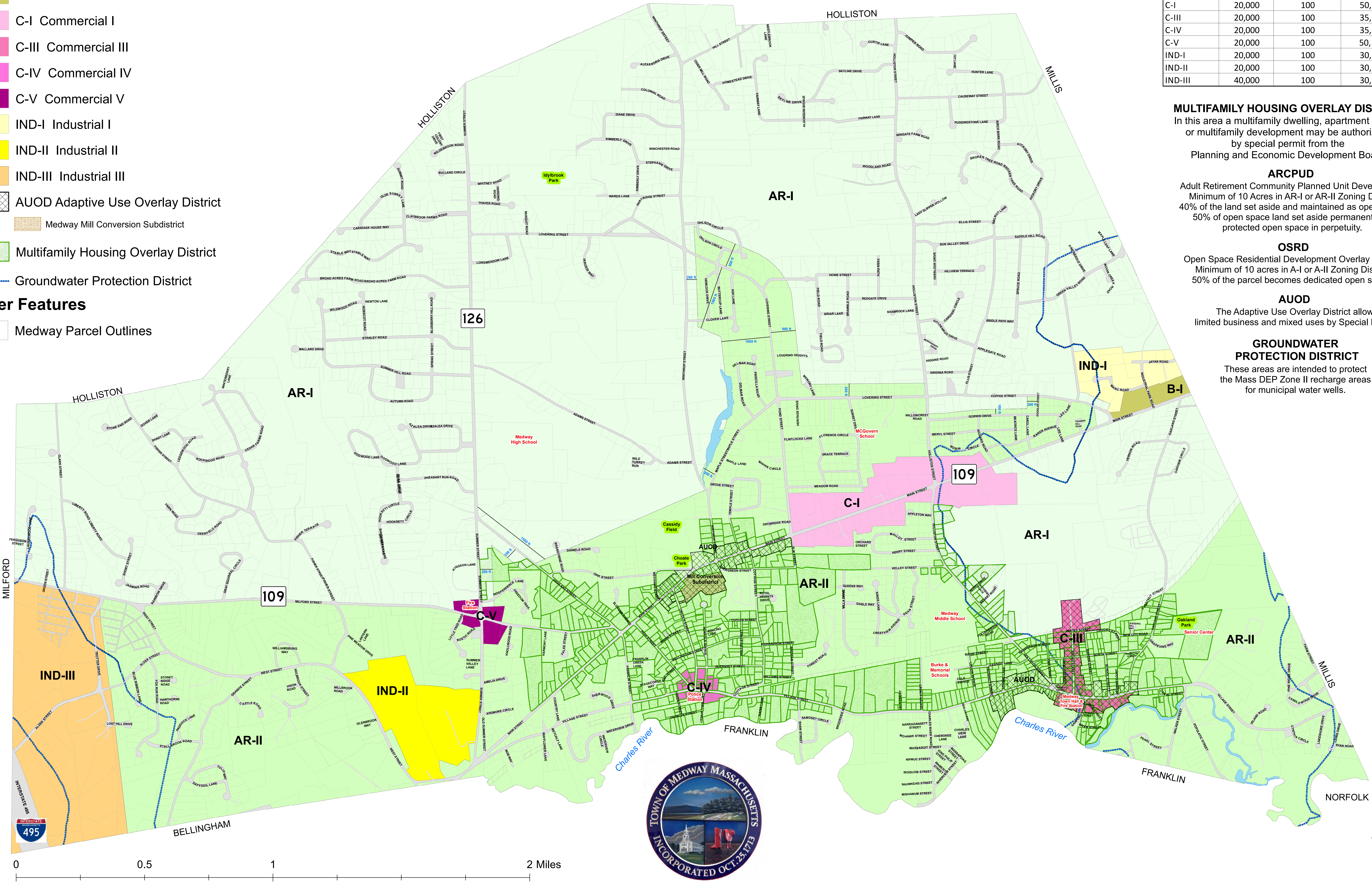
Open Space Residential Development Overlay District
Minimum of 10 acres in A-I or A-II Zoning District
50% of the parcel becomes dedicated open space

AUOD

The Adaptive Use Overlay District allows limited business and mixed uses by Special Permit.

GROUNDWATER PROTECTION DISTRICT

These areas are intended to protect the Mass DEP Zone II recharge areas for municipal water wells.



Prepared for the Medway
Planning & Economic Development Board
155 Village Street, Medway, MA 02053
508-533-3291
planningboard@townofmedway.org
Data provided by
Town of Medway and MassGIS

The information on this map is believed to be correct but errors in data entry or transmission may occur.
The map is not to be used for legal purposes.
The information on this map is subject to change or revision at any time.

Revised by *Fran V Hutton Lee*, July 9, 2015
as authorized by the May 11, Medway Town Meeting