

0 0.5 1 2 3
MILES

DATA SOURCES:
MASSGIS: SEE DETAILS ON DATA WITHIN THE 2018 OSRP
ON THE "MASSGIS DATA SOURCES" APPENDIX
MEDWAY ASSESSING, 10/2017
MEDWAY COMMUNITY & ECONOMIC DEVELOPMENT, 03/2018

PREPARED BY MACKENZIE LEAHY

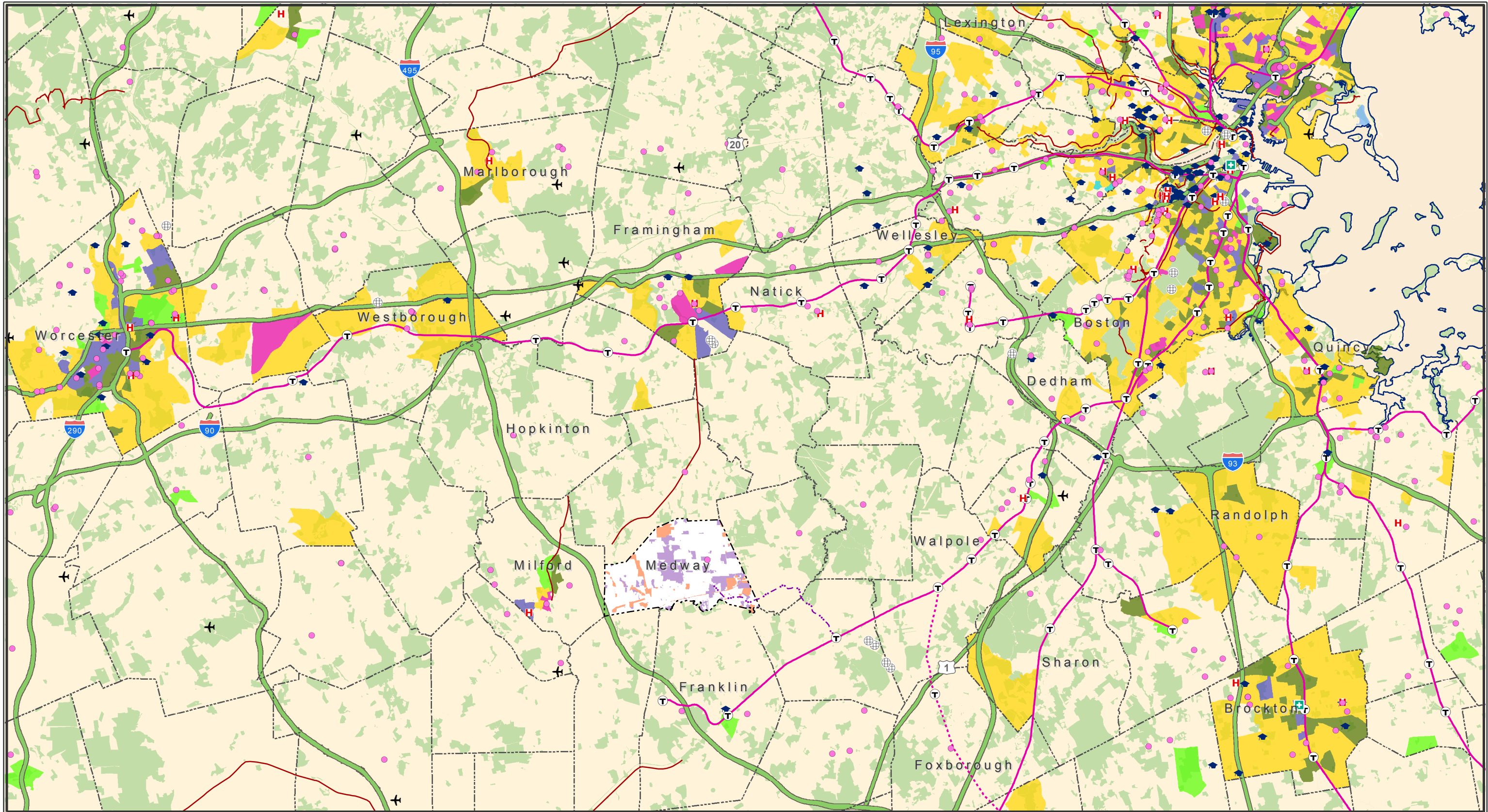
Water Bodies & Features

- Shoreline
- Intermittent Stream
- Perennial Stream
- Open Water
- Wetland

— MBTA Commuter Rail Regular Service	★ Long Term Care Facility
⋯ MBTA Rail Used Seasonally/Special Events	⊕ Prisons
— Existing or Underway Bike Trail	🏥 Hospital with ER
— Considered or Potential Bike Trail	🎓 Private University
— Active Railway	🏫 Vocational Schools
— Abandoned or Unknown Railway	✈ Airports
— GATRA Shuttle	🚉 MBTA Stop
■ Medway Protected/Limited Protection Land	
■ Medway Unprotected Land	
■ Protected and Recreational Open Space	

Regional Context

TOWN OF MEDWAY
MARCH 23, 2018



0 0.75 1.5 3 4.5 6 7.5
MILES

DATA SOURCES:

MASSGIS: SEE DETAILS ON DATA WITHIN THE 2018 OSRP
ON THE "MASSGIS DATA SOURCES" APPENDIX
MEDWAY ASSESSING, 10/2017
MEDWAY COMMUNITY & ECONOMIC DEVELOPMENT, 03/2018

PREPARED BY MACKENZIE LEAHY

Environmental Justice 2010 Populations

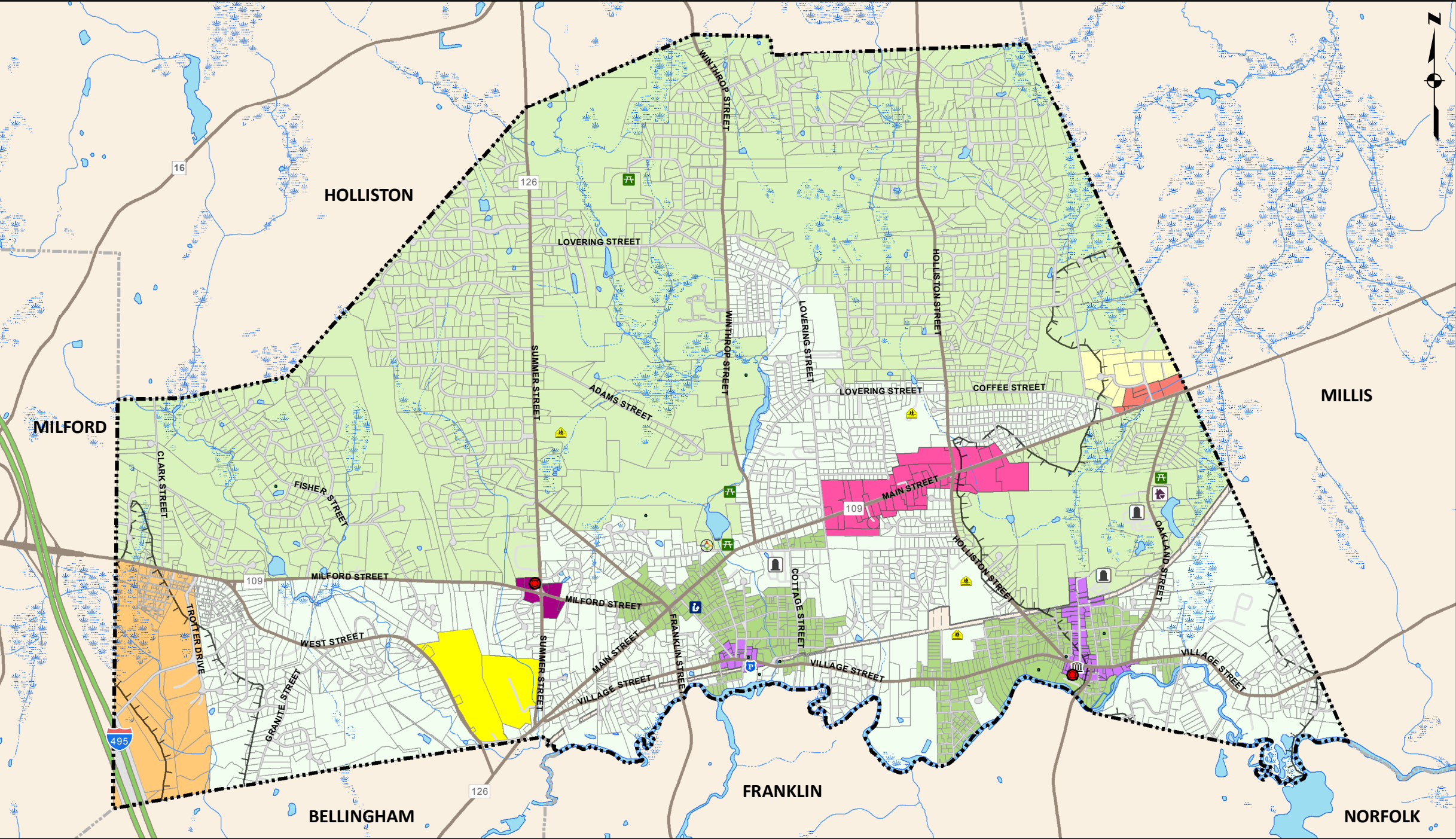
- Minority
- Income
- English isolation
- Minority and Income
- Minority and English isolation
- Income and English isolation
- Minority, Income and English isolation

- MBTA Commuter Rail Regular Service
- MBTA Rail Used Seasonally/Special Events
- Existing or Underway Bike Trail
- GATRA Shuttle
- Medway Protected/Limited Protection Land
- Medway Unprotected Land
- Protected and Recreational Open Space

- Health Center, Homeless Shelter
- Long Term Care Facility
- Hospitals
- Colleges & Universities
- Airports
- Prisons
- MBTA Stop

Regional Environmental Justice Populations and Accessibility to Services

TOWN OF MEDWAY
MARCH 23, 2018



Medway Zoning Map

TOWN OF MEDWAY
MARCH 23, 2018

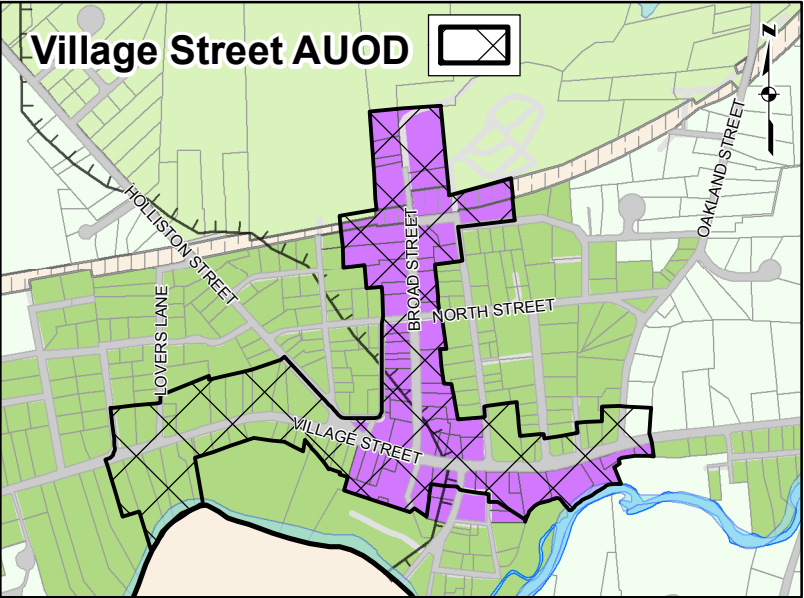
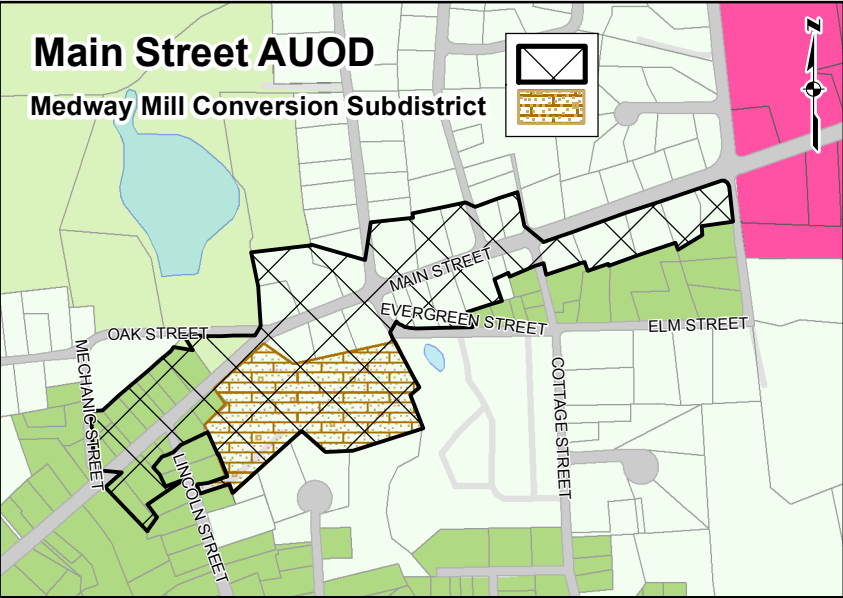
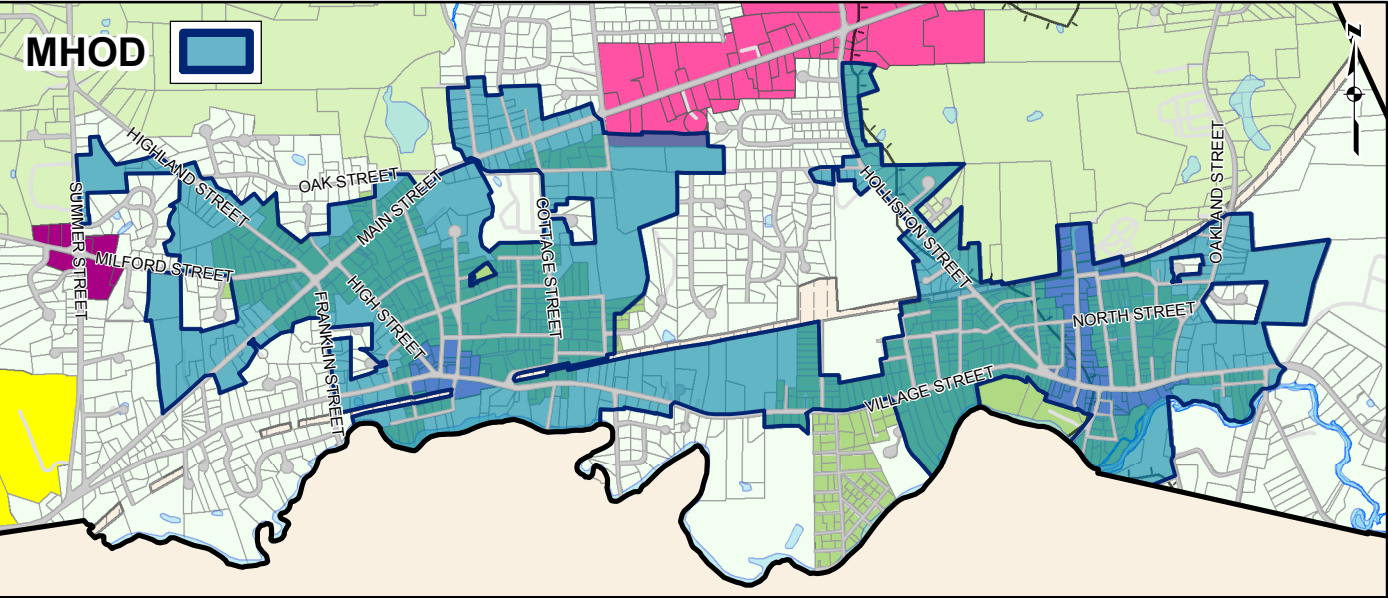
- Zoning District**
- AR-I Agricultural Residential I
 - AR-II Agricultural Residential II
 - VR Village Residential
 - VC Village Commercial
 - NC Neighborhood Commercial
 - CB Central Business
 - BI Business Industrial
 - EI East Industrial
 - ER Energy Resource
 - WI West Industrial

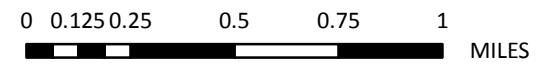
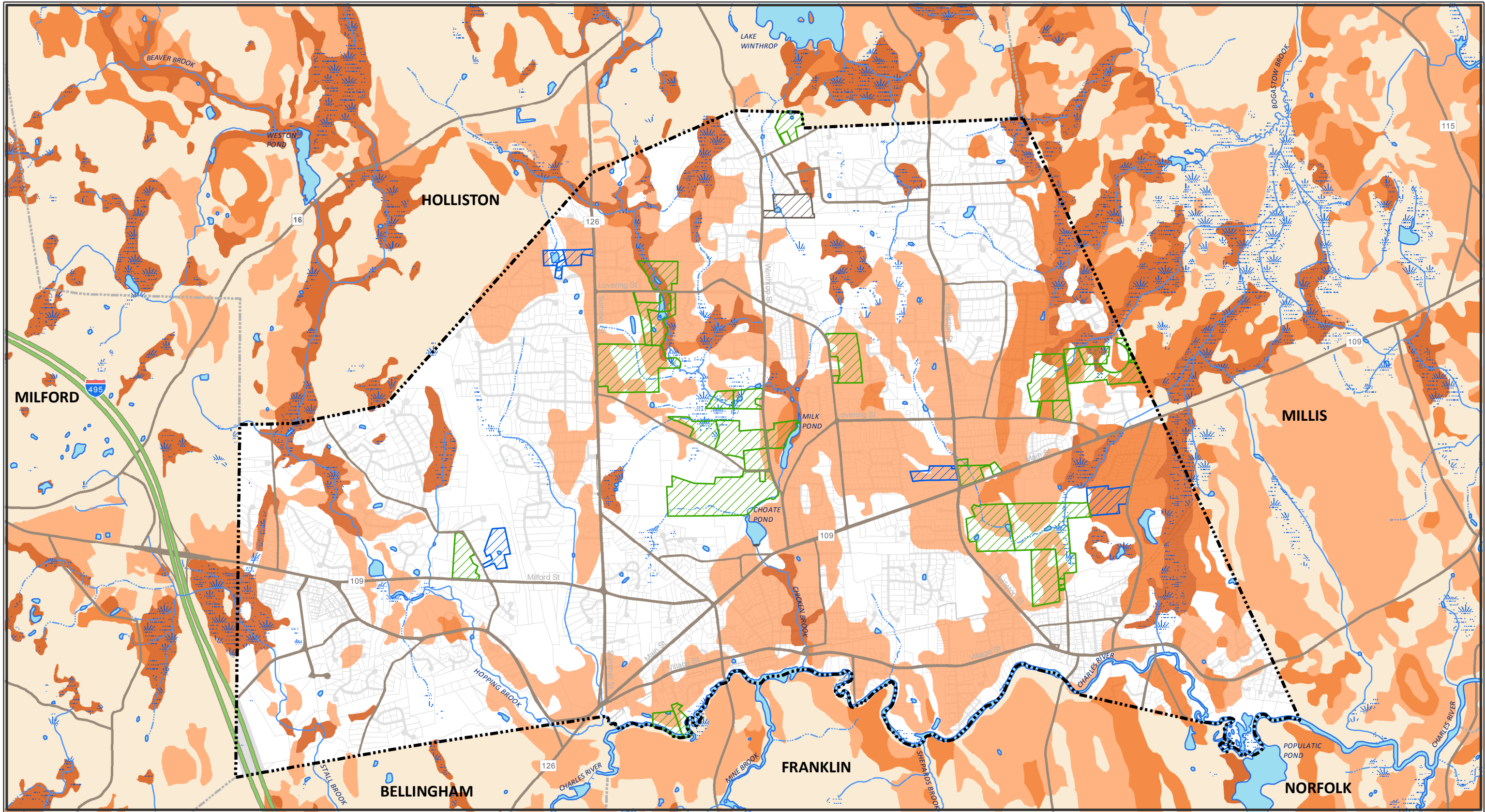
- Groundwater Protection District
- Open Water

- Other Features**
- Parcel Boundaries
 - Roads (Public & Private)
 - Rail ROW
 - Town Hall
 - Police Station
 - Fire Stations
 - Schools
 - Thayer House
 - Public Library
 - Senior Center
 - Parks, Fields
 - Cemeteries
 - Other Parks, Trails, Memorials, Dog Park, Picnic Areas

DATA SOURCES:
MASSGIS: LEVEL 3 ASSESSOR'S PARCELS, 10/2017
MEDWAY ASSESSING, 10/2017
MEDWAY COMMUNITY & ECONOMIC DEVELOPMENT, 02/2018

PREPARED BY MACKENZIE LEAHY





DATA SOURCES:
MASSGIS: SEE DETAILS ON DATA WITHIN THE 2018 OSRP
ON THE "MASSGIS DATA SOURCES" APPENDIX
MEDWAY ASSESSING, 10/2017
MEDWAY COMMUNITY & ECONOMIC DEVELOPMENT, 03/2018

PREPARED BY MACKENZIE LEAHY



Water Bodies & Features

- Shoreline
- Intermittent Stream
- Perennial Stream
- Open Water
- Wetland

Agricultural Properties

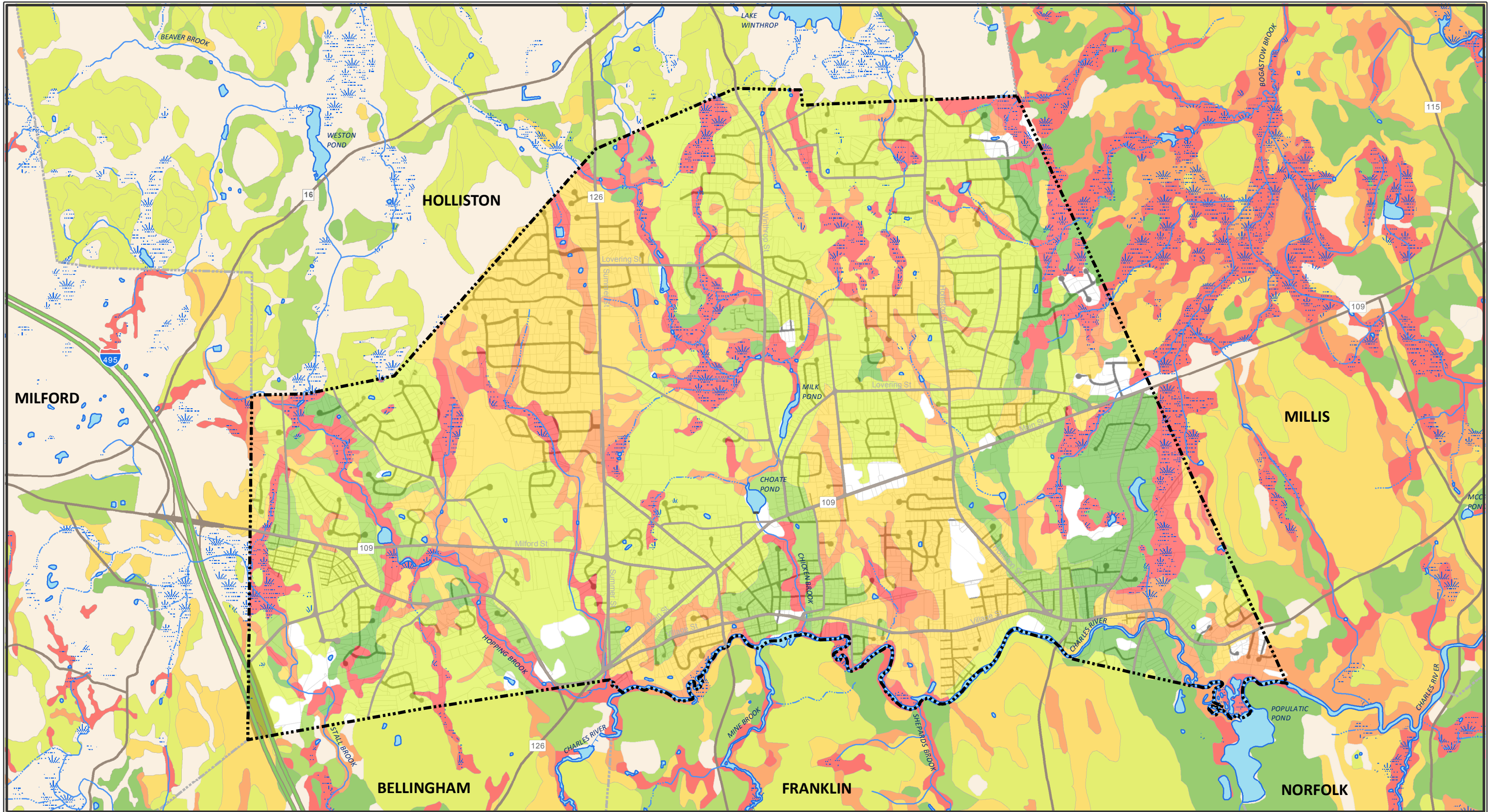
- Chapter 61 - Forest Lands
- Chapter 61A - Agricultural Lands
- Chapter 61B - Open Space & Recreation Lands

Farmland Soils

- All areas are prime farmland
- Farmland of statewide importance
- Farmland of unique importance

**Agricultural Properties
and Land with Significant
Agricultural Soils**

TOWN OF MEDWAY
MARCH 23, 2018



0 0.1250.25 0.5 0.75 1
MILES

DATA SOURCES:

MASSGIS: SEE DETAILS ON DATA WITHIN THE 2018 OSRP
ON THE "MASSGIS DATA SOURCES" APPENDIX
MEDWAY ASSESSING, 10/2017
MEDWAY COMMUNITY & ECONOMIC DEVELOPMENT, 03/2018

PREPARED BY MACKENZIE LEAHY



Water Bodies & Features

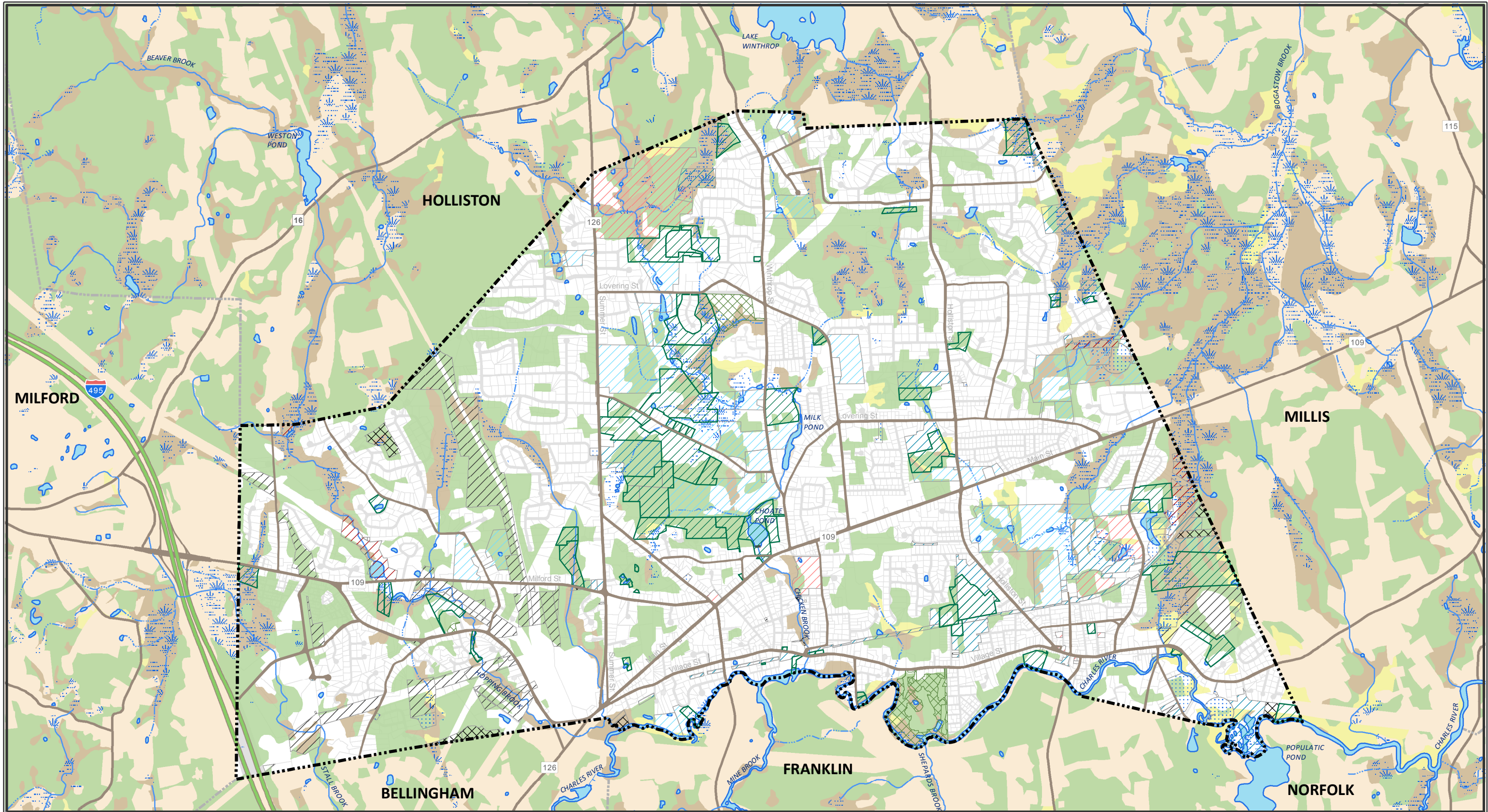
- Shoreline
- Intermittent Stream
- Perennial Stream
- Open Water
- Wetland

Soil Conditions



**Natural Drainage Conditions
of Soil and Areas Suitable
for Development**

TOWN OF MEDWAY
MARCH 23, 2018



0 0.125 0.25 0.5 0.75 1
MILES

DATA SOURCES:

MASSGIS: SEE DETAILS ON DATA WITHIN THE 2018 OSRP
ON THE "MASSGIS DATA SOURCES" APPENDIX
MEDWAY ASSESSING, 10/2017
MEDWAY COMMUNITY & ECONOMIC DEVELOPMENT, 03/2018

PREPARED BY MACKENZIE LEAHY



Water Bodies & Features

- Shoreline
- Intermittent Stream
- Perennial Stream
- Open Water
- Wetland

Open Space & Vacant Land

- Municipal Open Space & Recreation
- Conservation Restriction
- Chapter Land
- Municipal Buildings & Facilities / Vacant Land
- U.S. Army Corp of Engineers

Non-Profit

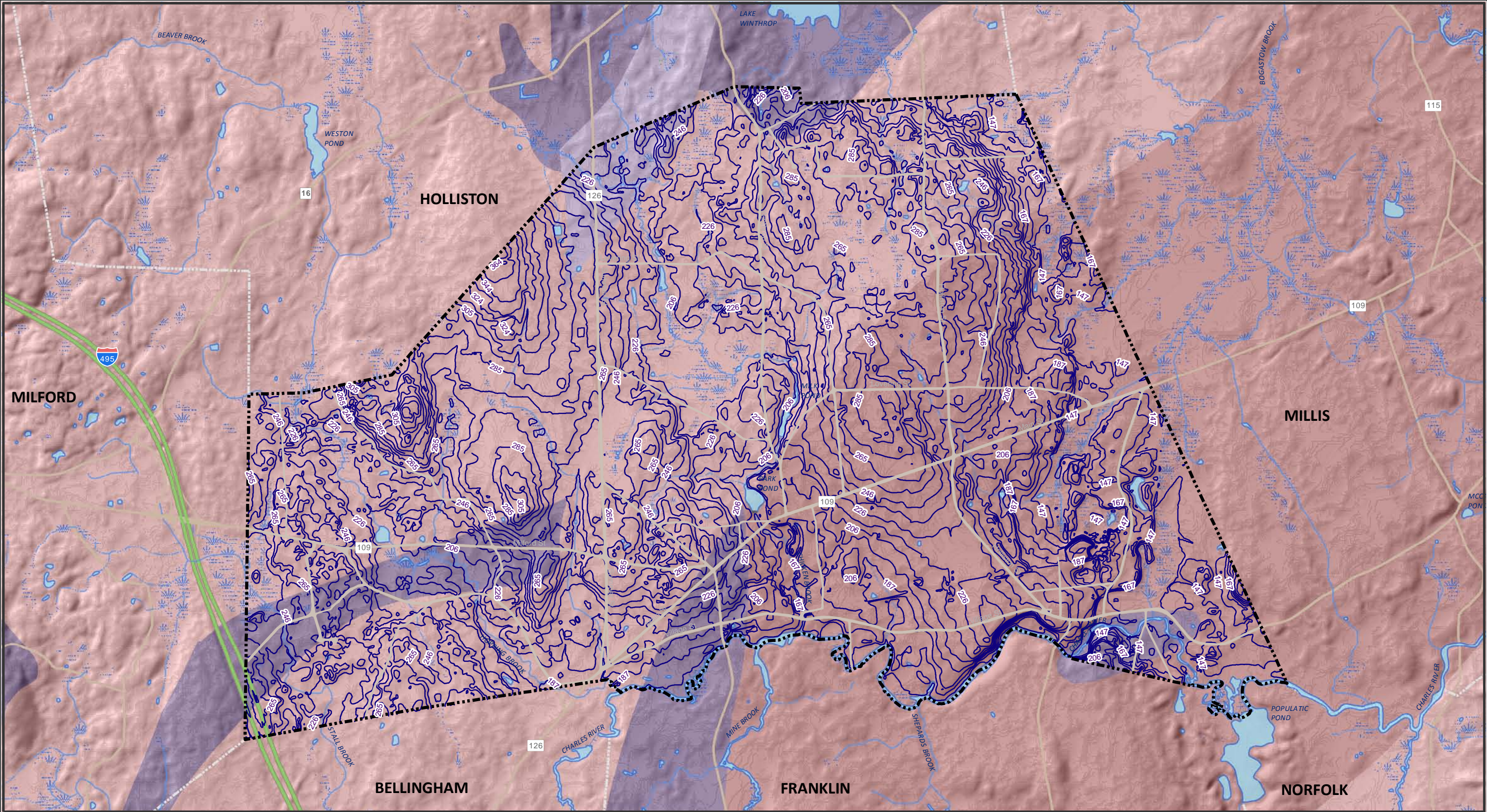
- Utilities
- Owner Unknown
- Drainage, Well, or Water Tank Parcel

Prime Forest Land

- Prime Forest Land
- Forest of Statewide Importance
- Forest of Local Importance

**Open Space and
Vacant Land
and Prime Forest Land**

TOWN OF MEDWAY
MARCH 23, 2018



0 0.125 0.25 0.5 0.75 1
MILES

DATA SOURCES:
MASSGIS: SEE DETAILS ON DATA WITHIN THE 2018 OSRP
ON THE "MASSGIS DATA SOURCES" APPENDIX
MEDWAY ASSESSING, 10/2017
MEDWAY COMMUNITY & ECONOMIC DEVELOPMENT, 03/2018

PREPARED BY MACKENZIE LEAHY



Water Bodies & Features

- Shoreline
- Intermittent Stream
- Perennial Stream
- Open Water
- Wetland

Bedrock Lithology

- Avalon Granite
- Felsic Volcanics
- Granite, other
- Mafic Rocks

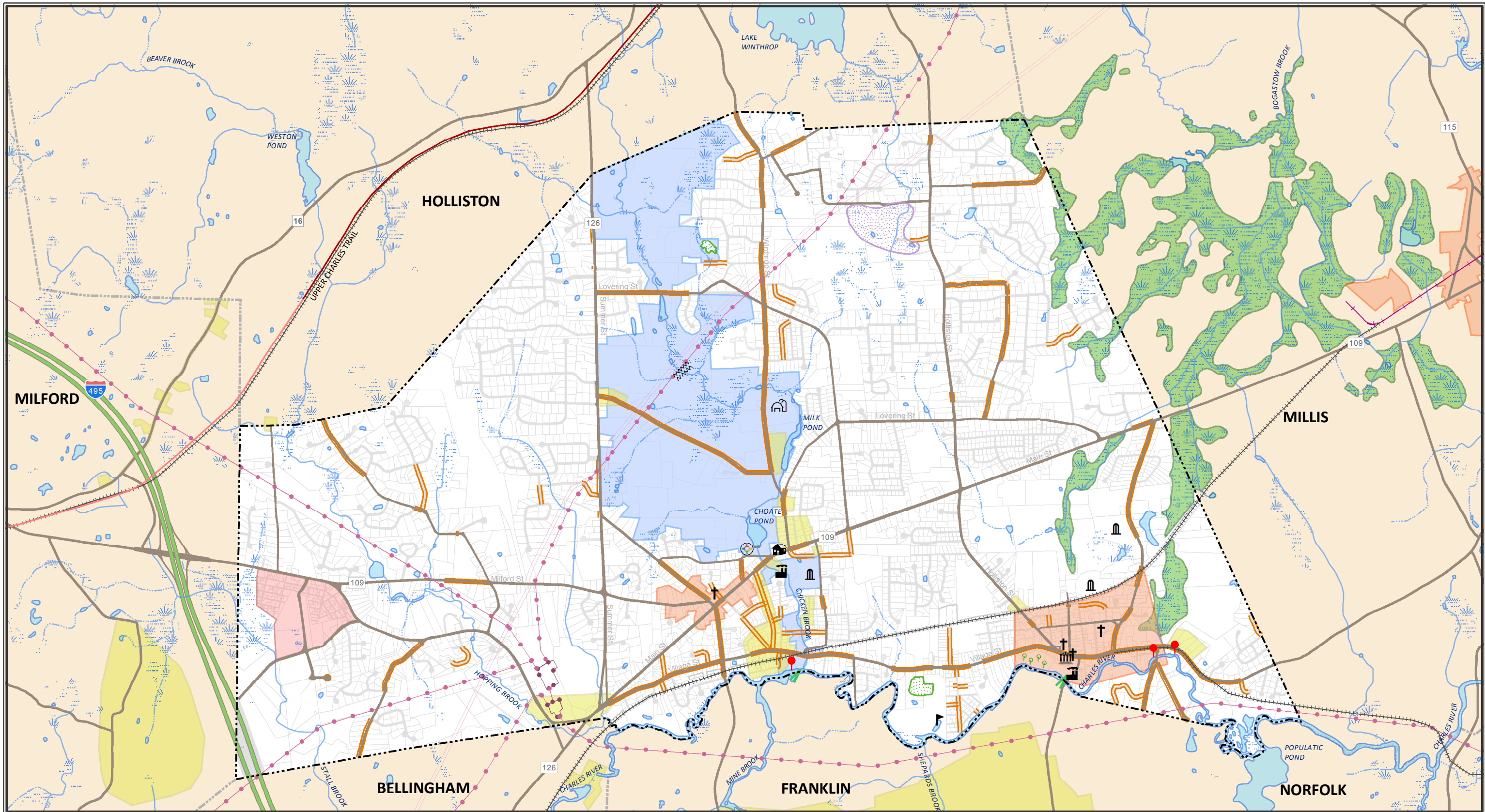
Contours

Shaded Relief

- Elevation High
- Elevation Low

Bedrock Geology

TOWN OF MEDWAY
MARCH 23, 2018



0 0.125 0.25 0.5 0.75 1
MILES

DATA SOURCES:

MASSGIS: SEE DETAILS ON DATA WITHIN THE 2018 OSRP
ON THE "MASSGIS DATA SOURCES" APPENDIX
MEDWAY ASSESSING, 10/2017
MEDWAY COMMUNITY & ECONOMIC DEVELOPMENT, 03/2018

PREPARED BY MACKENZIE LEAHY



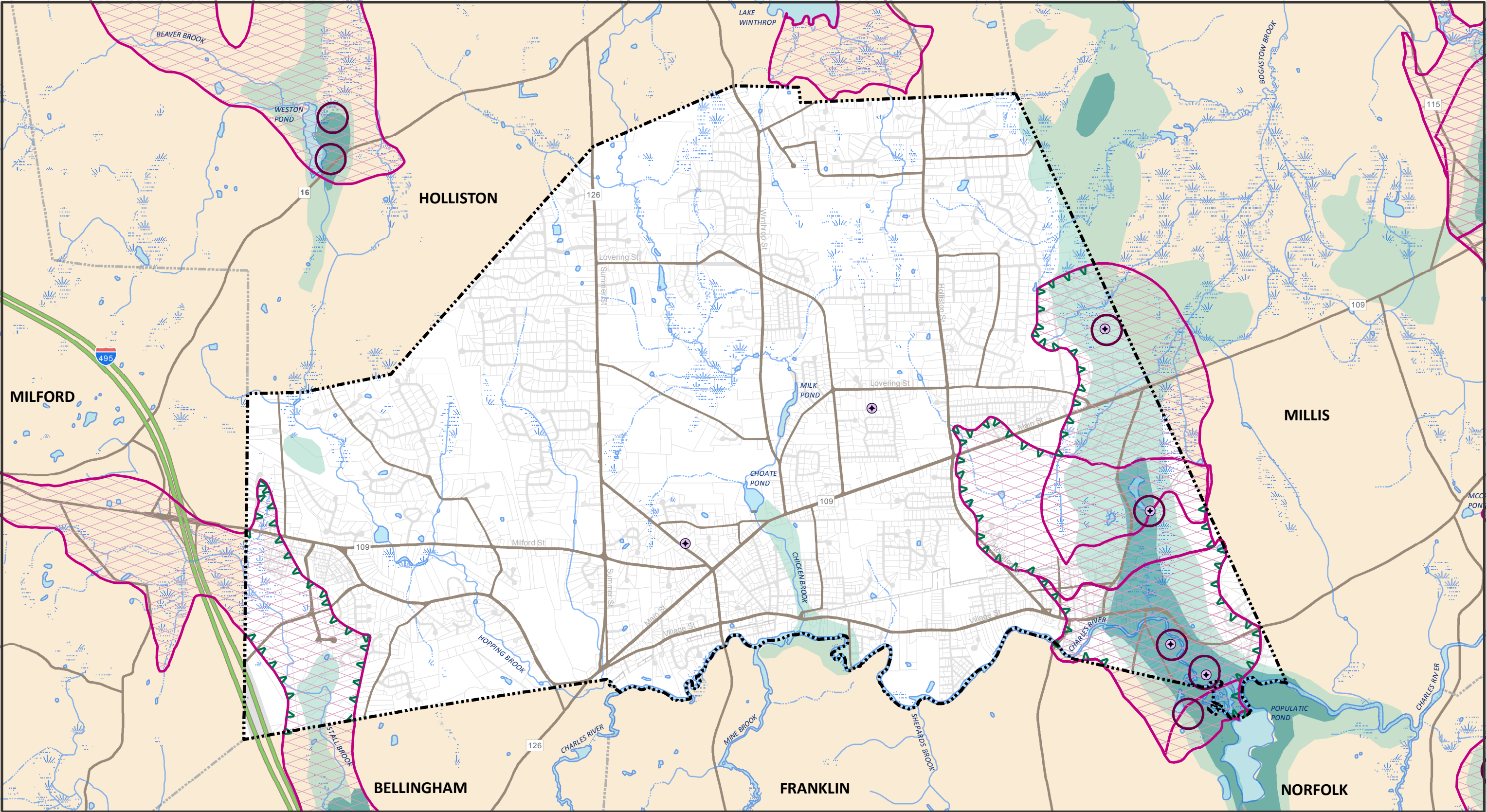
Water Bodies & Features

- Shoreline
- Intermittent Stream
- Perennial Stream
- Open Water
- Wetland

- | | | | |
|------------------------------------|-----------------------------------|-----------------------------|------------------|
| Pipeline | Vernal Pool Cluster | Charles River Access Points | Mills |
| Powerline | Tree Groves | David Hoag Boardwalk | Thayer Homestead |
| Substation | Chicken Brook Corridor | Medway Amphitheatre | Jacob Ide House |
| Active Railway | Black Swamp | Medway Community Farm | Town Hall |
| Abandoned or Unknown Railway | Oak Grove Urban Renewal Area | Skating Pond | Churches |
| Existing or Underway Bike Trail | Nat'l Register of Historic Places | Dams | Cemeteries |
| Considered or Potential Bike Trail | Historic Inventoried Area | | |
| Scenic Roads | | | |

Scenic and Unique Features

TOWN OF MEDWAY
MARCH 23, 2018



00.1250.250.50.751

MILES

DATA SOURCES:

MASSGIS: SEE DETAILS ON DATA WITHIN THE 2018 OSRP ON THE "MASSGIS DATA SOURCES" APPENDIX
MEDWAY ASSESSING, 10/2017
MEDWAY COMMUNITY & ECONOMIC DEVELOPMENT, 03/2018

PREPARED BY MACKENZIE LEAHY

Water Bodies & Features

Shoreline

Intermittent Stream

Perennial Stream

Open Water

Wetland

Public Wells & Water Tanks

Groundwater Protection District

Wellhead Protection Areas

DEP Approved Zone I

DEP Approved Zone II

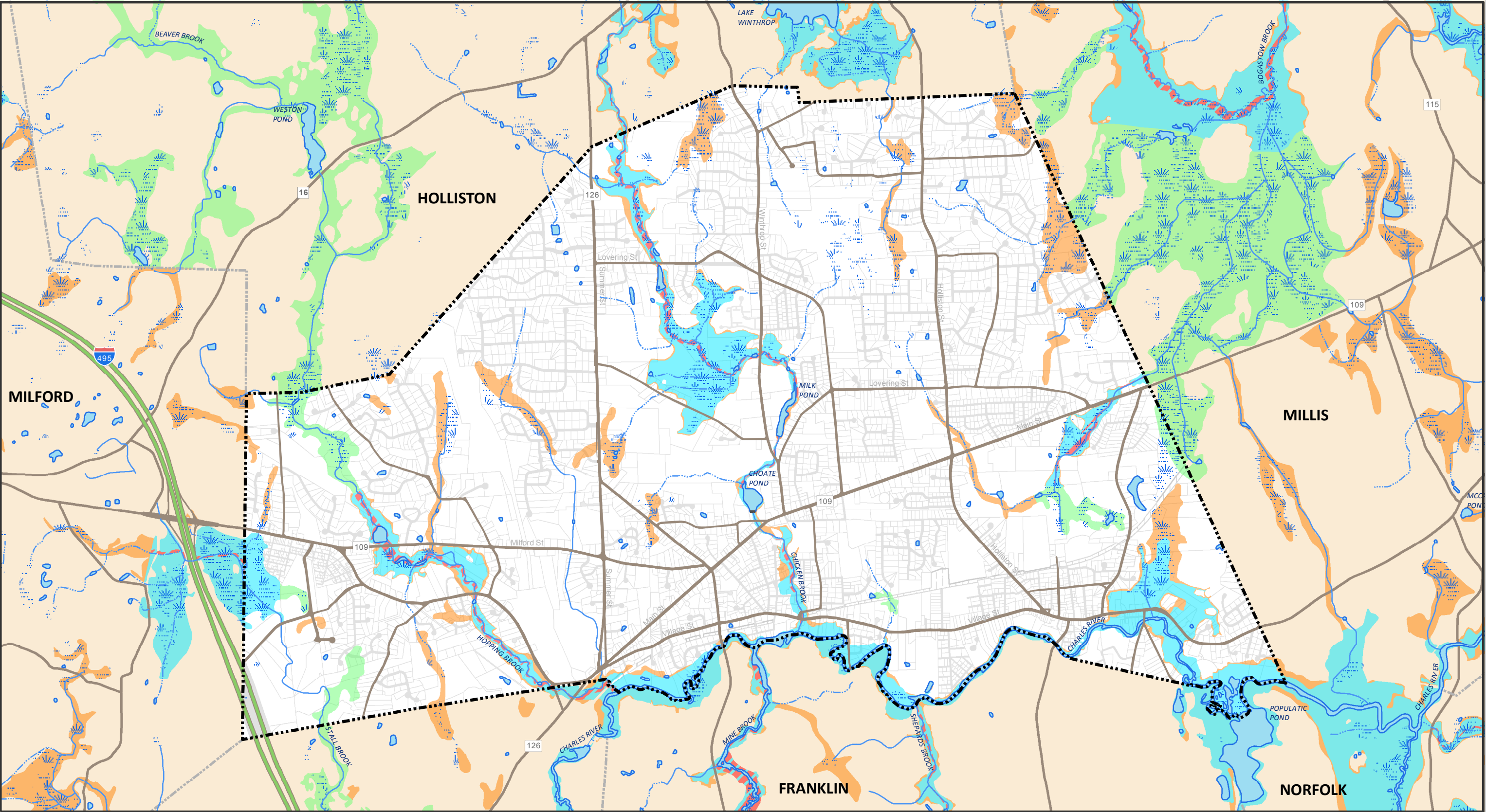
Aquifers

High Yield

Medium Yield

Water Resources

TOWN OF MEDWAY
MARCH 23, 2018



0 0.1250.25 0.5 0.75 1
MILES

DATA SOURCES:

MASSGIS: SEE DETAILS ON DATA WITHIN THE 2018 OSRP
ON THE "MASSGIS DATA SOURCES" APPENDIX
MEDWAY ASSESSING, 10/2017
MEDWAY COMMUNITY & ECONOMIC DEVELOPMENT, 03/2018

PREPARED BY MACKENZIE LEAHY



Water Bodies & Features

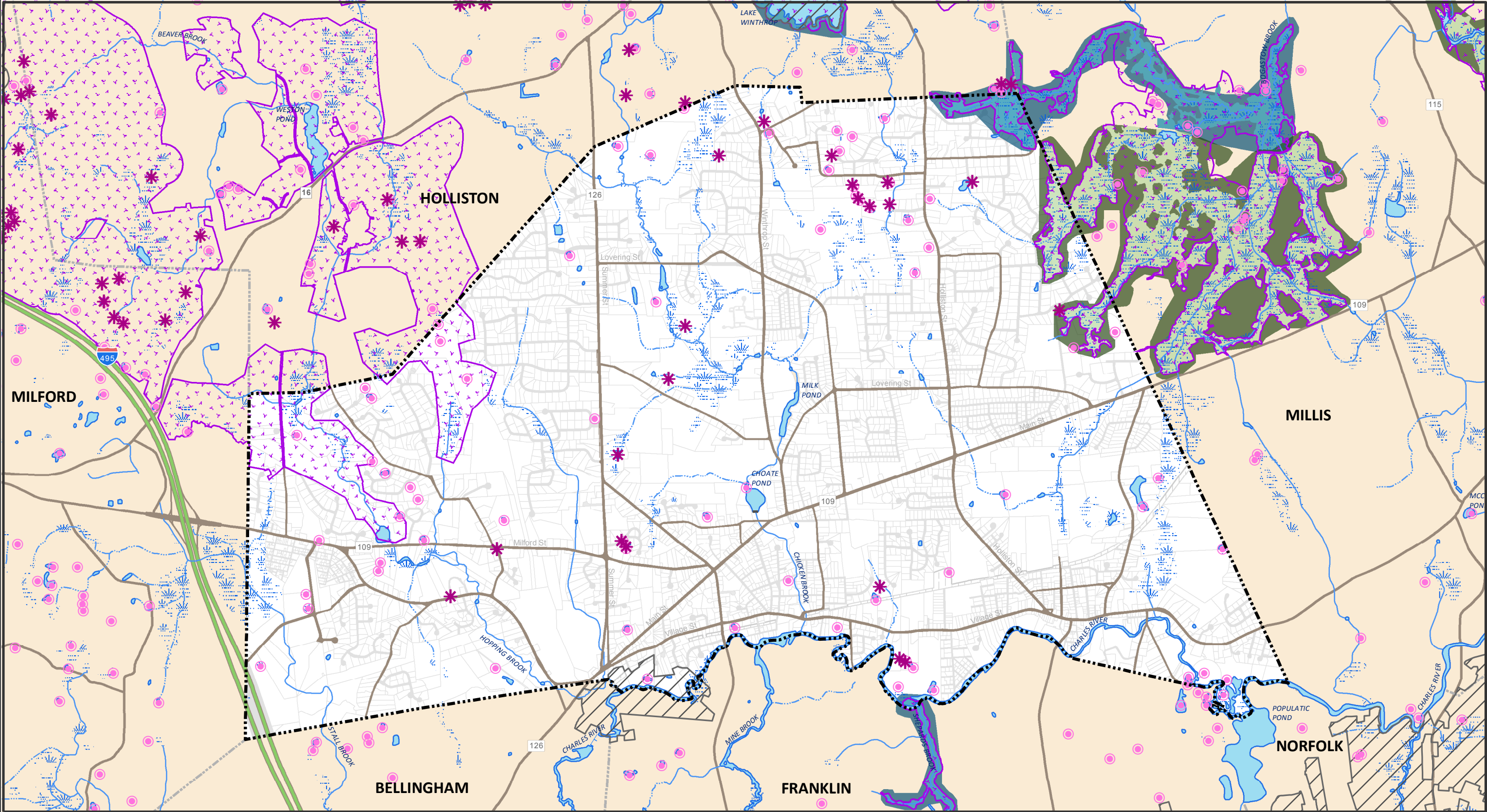
- Shoreline
- Intermittent Stream
- Perennial Stream
- Open Water
- Wetland

FEMA Flood Zone Designations

- A: 1% Annual Chance of Flooding, no BFE
- AE: 1% Annual Chance of Flooding, with BFE
- AE: Regulatory Floodway
- X: 0.2% Annual Chance of Flooding

FEMA Flood Zones

TOWN OF MEDWAY
MARCH 23, 2018



0 0.1250.25 0.5 0.75 1
MILES

DATA SOURCES:

MASSGIS: SEE DETAILS ON DATA WITHIN THE 2018 OSRP
ON THE "MASSGIS DATA SOURCES" APPENDIX
MEDWAY ASSESSING, 10/2017
MEDWAY COMMUNITY & ECONOMIC DEVELOPMENT, 03/2018

PREPARED BY MACKENZIE LEAHY



Water Bodies & Features

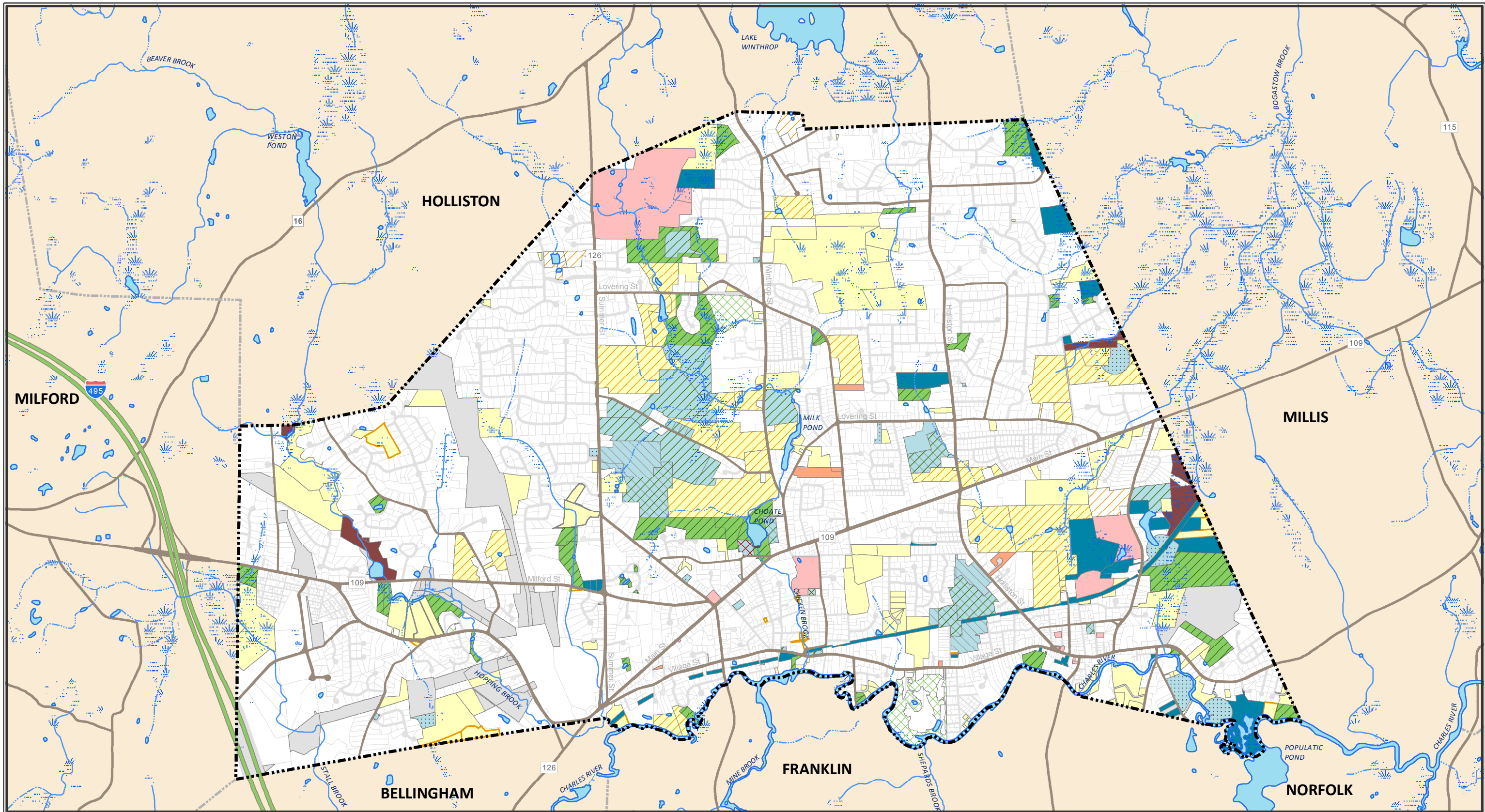
- Shoreline
- Intermittent Stream
- Perennial Stream
- Open Water
- Wetland

- Least-Disturbed Wetland Complexes
- Priority Natural Community Wetland
- Upland Buffer of Wetland Core
- Aquatic Core
- Upland Buffer of Aquatic Core

- Certified Vernal Pools
- Potential Vernal Pools
- NHESP Estimated Habitats of Rare Wildlife
- BioMap2 Core Habitat - Species of Conservation Concern

**Core Habitats and
Critical Natural Landscapes**

TOWN OF MEDWAY
MARCH 23, 2018



0 0.125 0.25 0.5 0.75 1
MILES

DATA SOURCES:

MASSGIS: SEE DETAILS ON DATA WITHIN THE 2018 OSRP
ON THE "MASSGIS DATA SOURCES" APPENDIX
MEDWAY ASSESSING, 10/2017
MEDWAY COMMUNITY & ECONOMIC DEVELOPMENT, 03/2018

PREPARED BY MACKENZIE LEAHY



Water Bodies & Features

- Shoreline
- Intermittent Stream
- Perennial Stream
- Open Water
- Wetland

Land of Conservation & Recreation Interest

Limited Protection

- Municipal Schools & Associated Fields
- Chapter Land

Protected

- Conservation Restriction
- Conservation Land
- Municipal Land
- U.S. Army Corp of Engineers Land
- Non-Profit

Owner Unknown

Unprotected

- Municipal Buildings & Facilities/Vacant Land
- Non-Profit Land
- Utilities

Municipal

- Drainage, Well, or Water Tank Parcel
- Open Space & Recreation
- Affordable Housing Trust
- Historic Preservation

Lands of Conservation or Recreation Interest

TOWN OF MEDWAY
APRIL 13, 2018