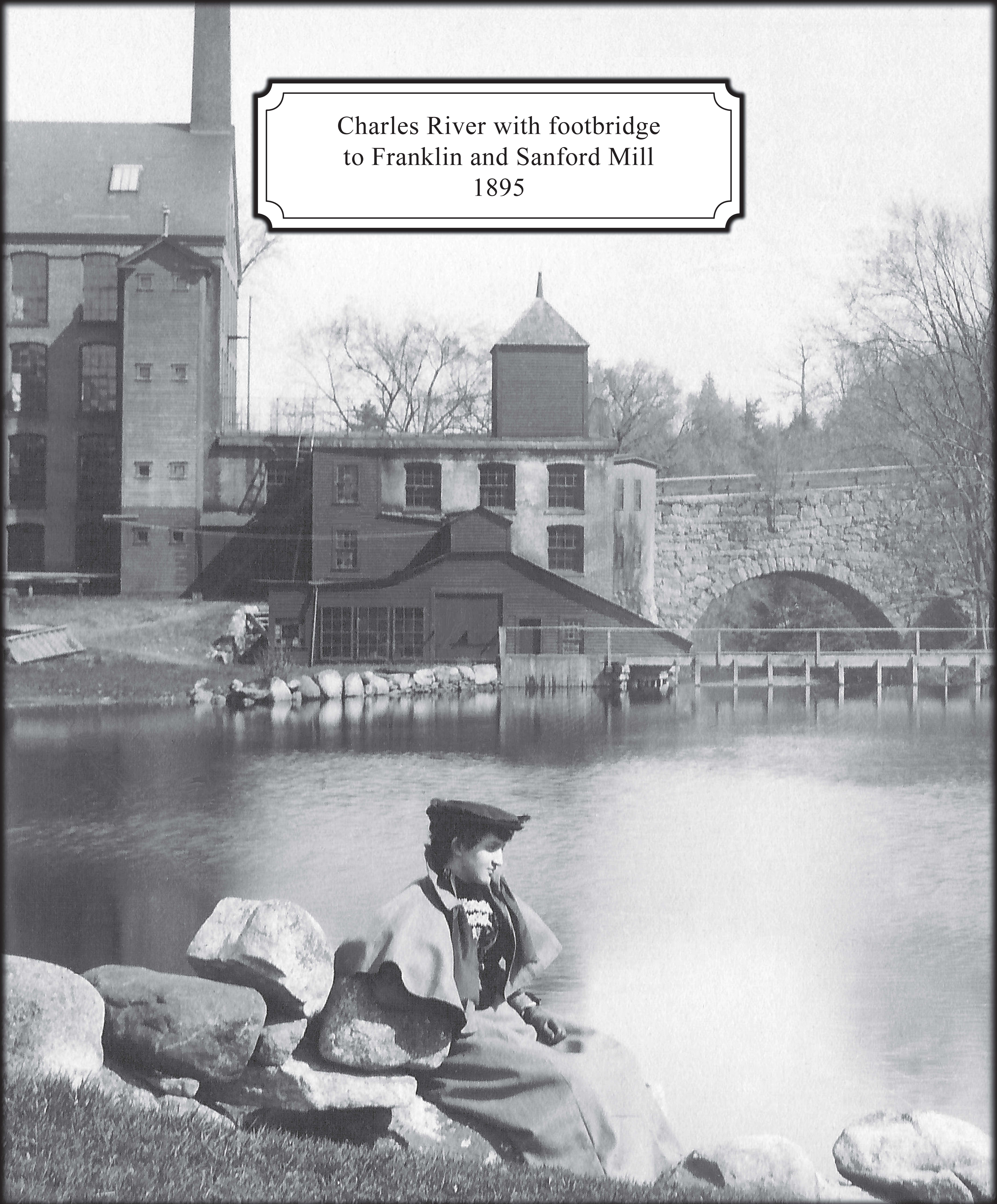
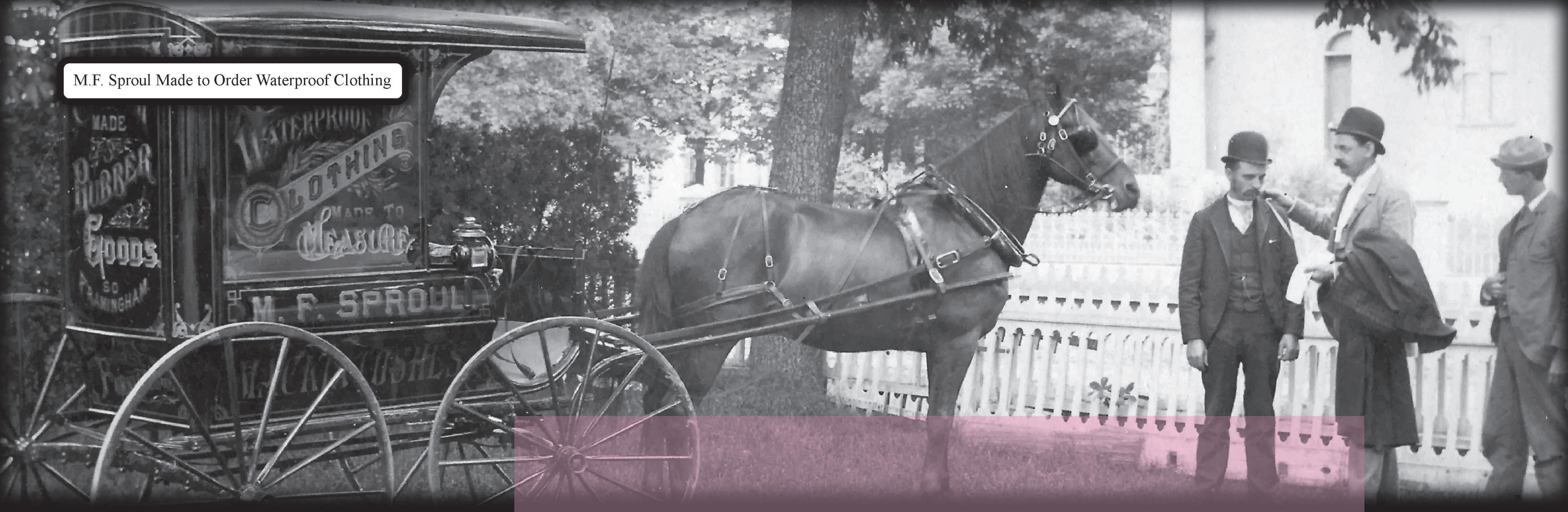
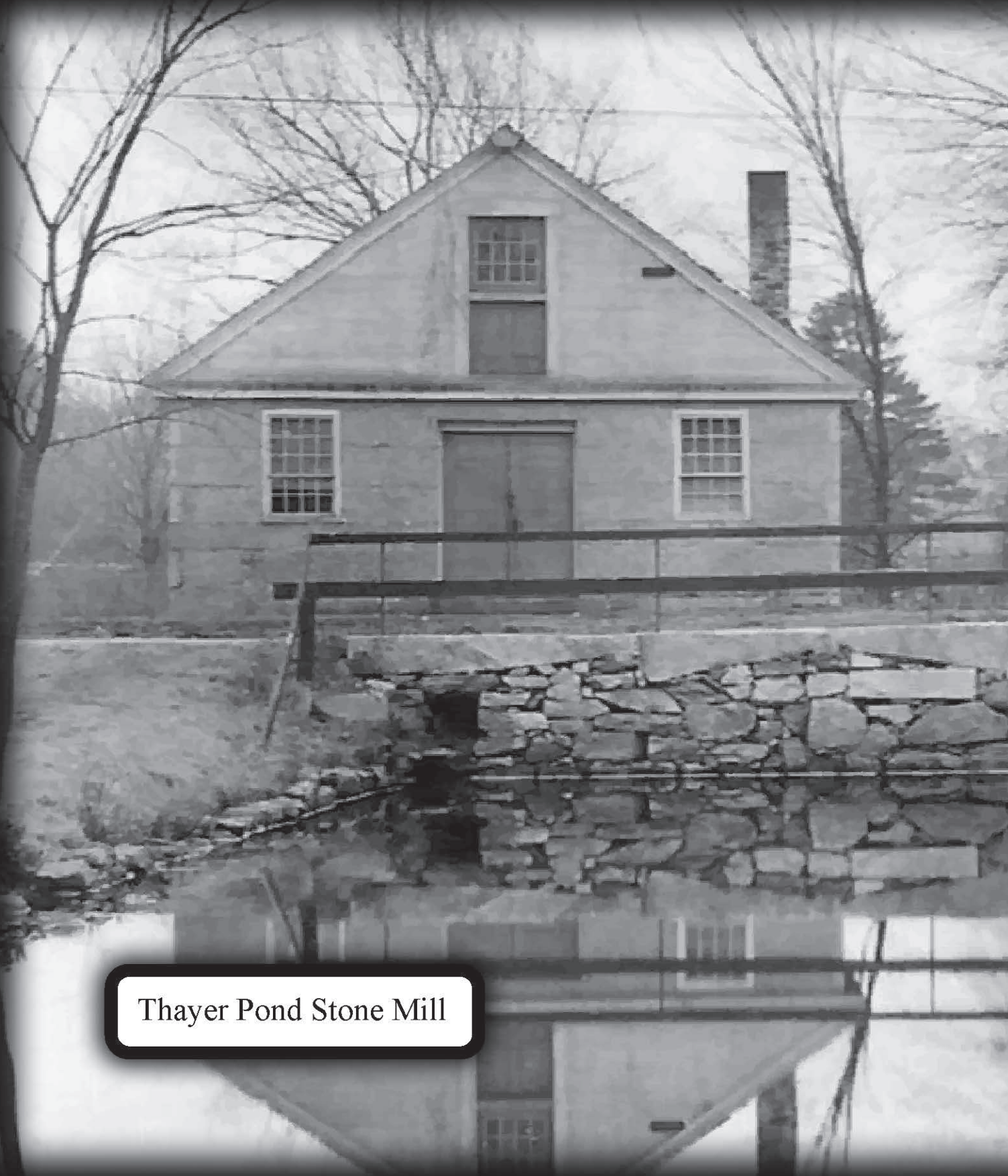


Charles River with footbridge
to Franklin and Sanford Mill
1895

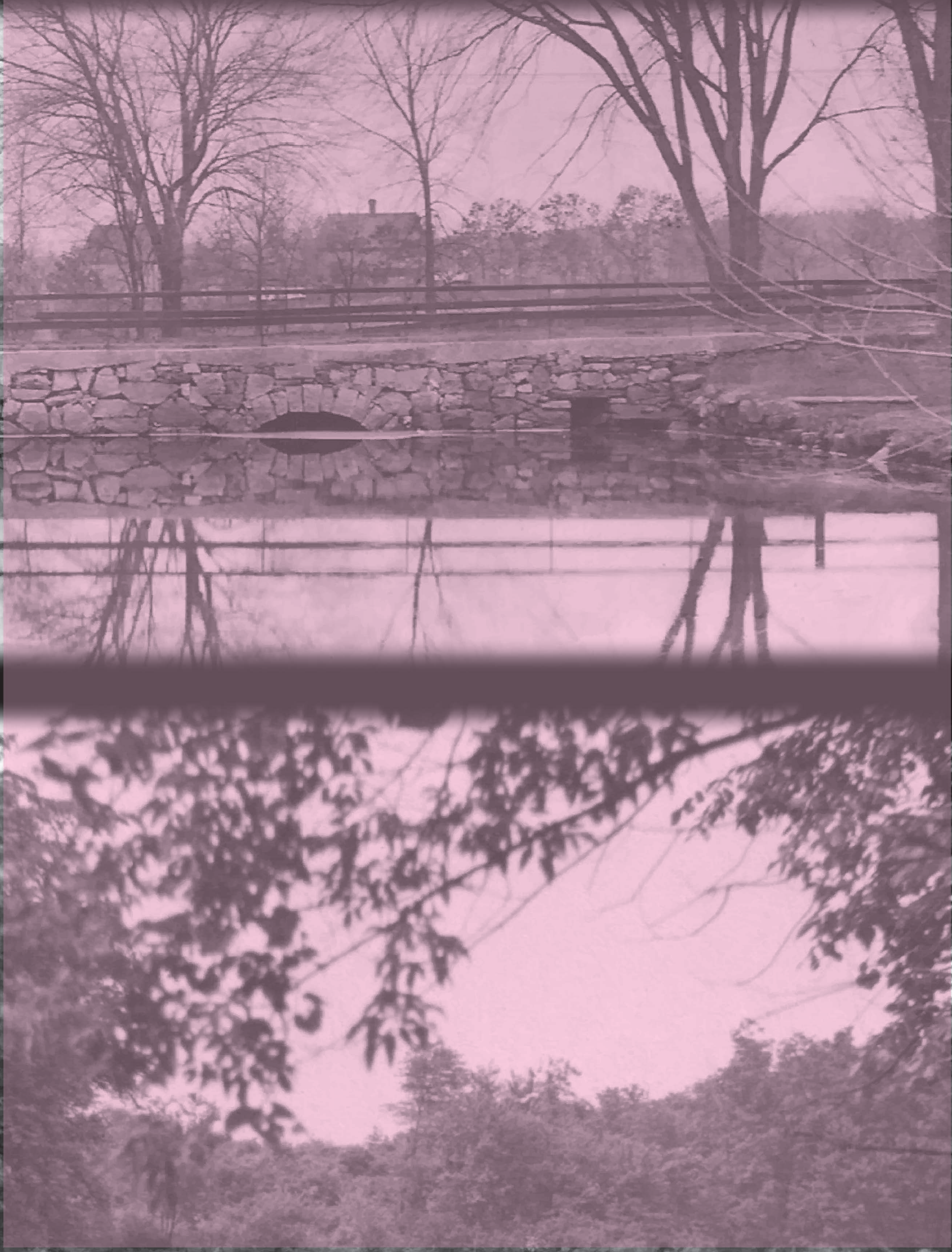




M.F. Sproul Made to Order Waterproof Clothing



Thayer Pond Stone Mill



Charles River Dam - 1930s



Medway Coal and Grain, Broad St - 1946



Wilkinsons Factory, Main and Mechanic Street - Built 1835, Razed 1964

Congress Shirt Factory, northeast of Main and Winthrop Street - Built 1832, Burned 1910



Sanford Mill - Built in 1885



United Awl & Needle Co., Awl St. - Built in 1871



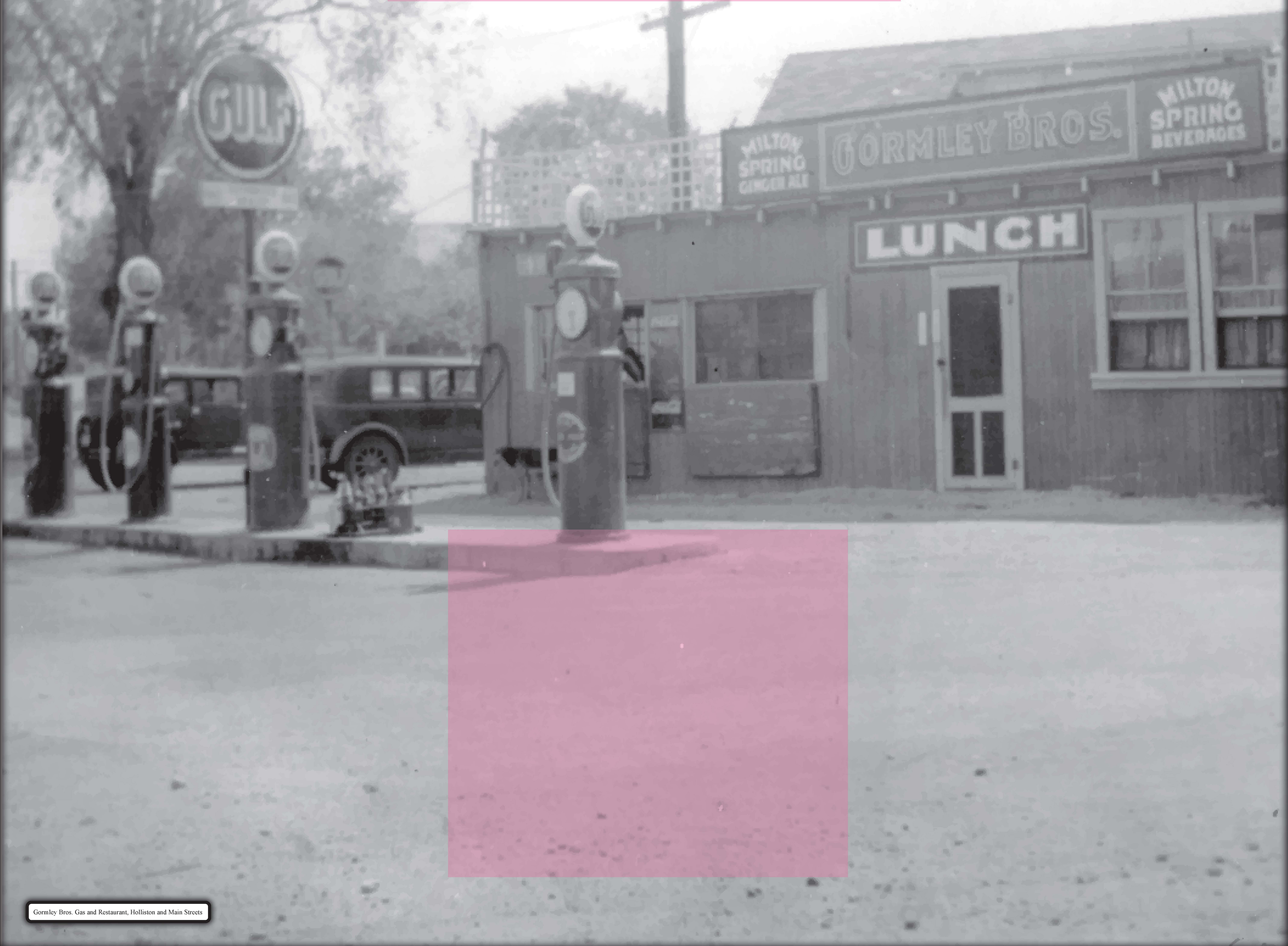
Along with farming and gardening, commerce grew in Medway, from small horse-drawn businesses to factories. Many were near waterways, especially the Charles River, which runs through Medway. Shown here are Sanford Mill, Gormley Bros. Store, M.F. Sproul Made to Order Waterproof Clothing, United Awl (Awl Street), Medway Coal and Grain, Congress Shirt Shop, and Wilkinson's Factory. Sanford Mill is now condominiums and the others are long gone.

Visit www.medwayhistoricalsociety.org or scan the QR code below to learn more.



Medway Historical Commission 2023.
townofmedway.org/historical-commission
All images are courtesy of the Medway Historical Society.

Medway Businesses, Waterways, and Dams



Gormley Bros. Gas and Restaurant, Holliston and Main Streets