

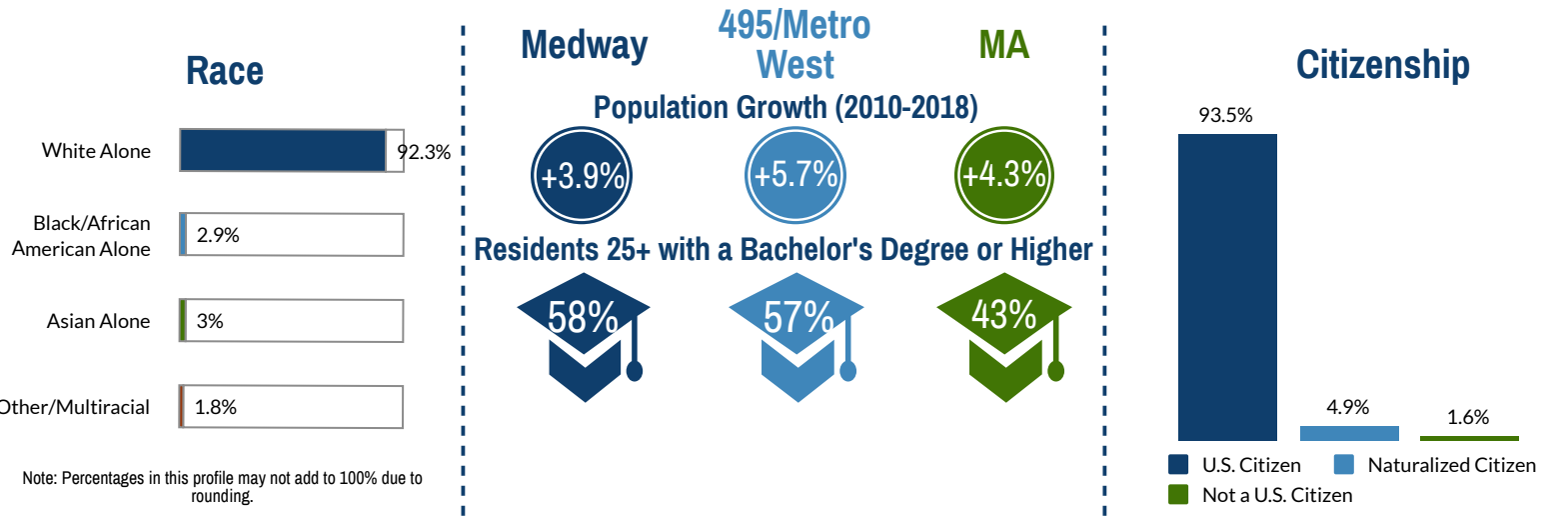
# MEDWAY, MA

2020



	% of 495/MetroWest	% of MA
Population: 13,244	2.1%	0.2%
Median Household Income: \$119,450	97%	154%
Per Capita Income: \$53,330	104%	128%
Jobs: 7,539	2.2%	0.2%

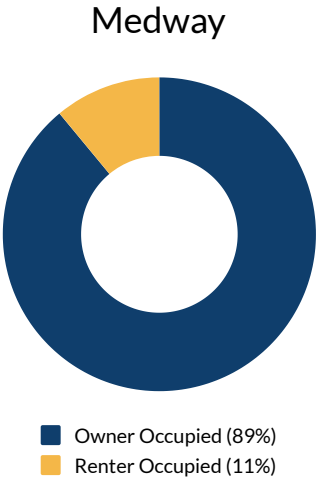
## SOCIOECONOMIC



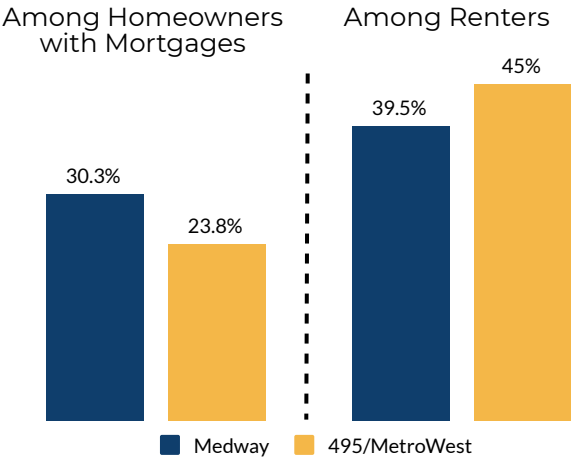
## HOUSING

Total Housing Units: 4,914

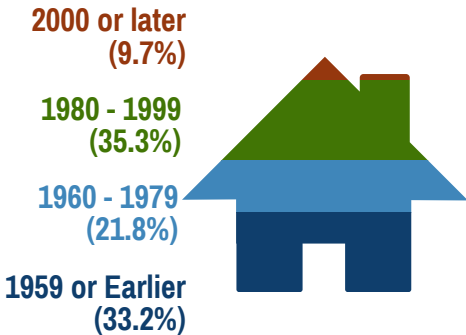
### Housing Occupancy



### Housing Cost Burden



### Year Structure Built

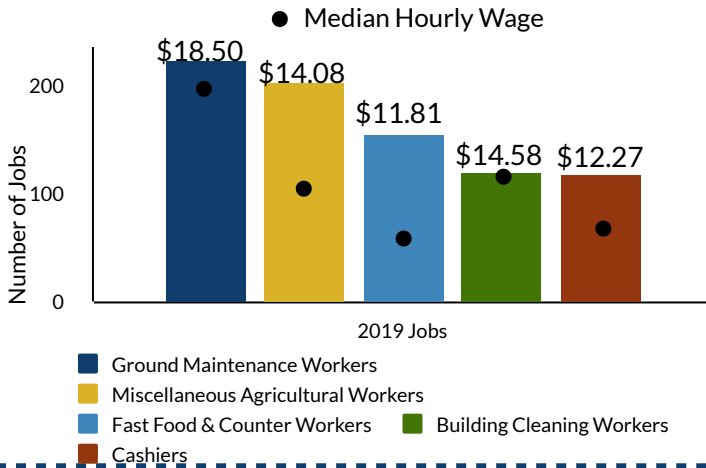


Sources  
QUICK FACTS: U.S. Census Bureau, 2018 ACS 5-Year; EMSI, 2019 Jobs (includes self-employed workers)  
SOCIOECONOMIC & HOUSING: U.S. Census Bureau, 2018 ACS 5-year.

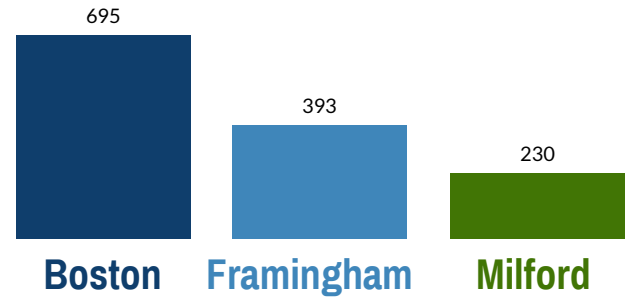
Housing-cost burden is defined by the U.S. Census Bureau as "30 percent or more of household income spent on housing-costs."

# OCCUPATIONS & COMMUTING

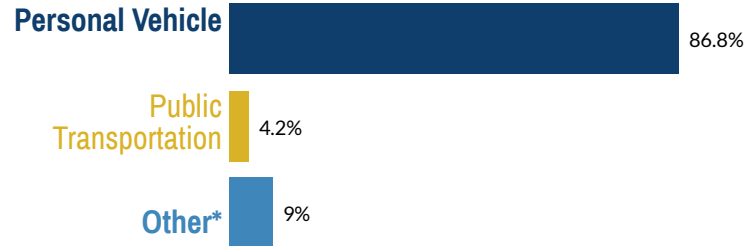
## Top Occupations & Wages in Medway



## Top Communities Medway Workers Commute To:



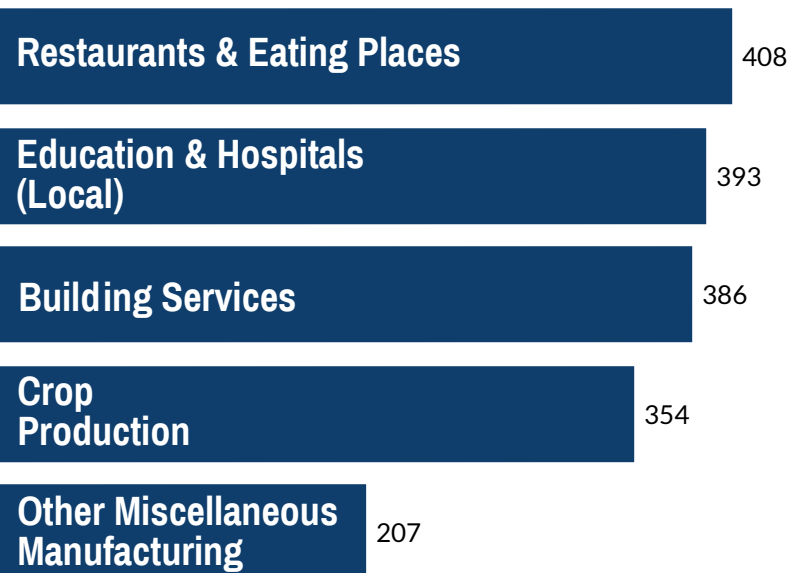
## Getting to Work



\*Other includes walking, bicycling, taxicab, motorcycle, or working at home.

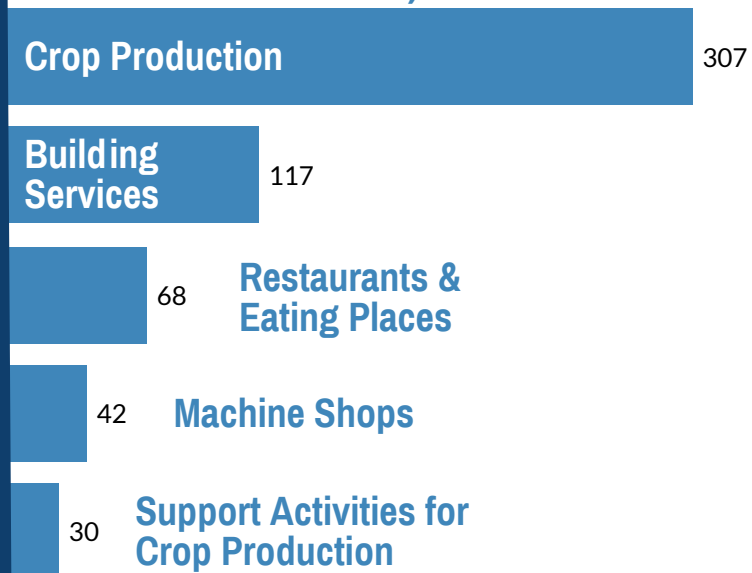
# INDUSTRY BASE

## Largest Industries (2019):



Labels to right of bars represent number of jobs.

## Fastest Growing Industries (2010-2019):



Labels to right of bars represent number of jobs.

Sources

OCCUPATIONS & INDUSTRY BASE: EMSI.  
COMMUTING: United States Census Bureau 2018, OnTheMap Application.

Prepared by the Public Policy Center at UMass Dartmouth for the 495/MetroWest Partnership.