

# Medway's Integrated Water Resources Management Plan

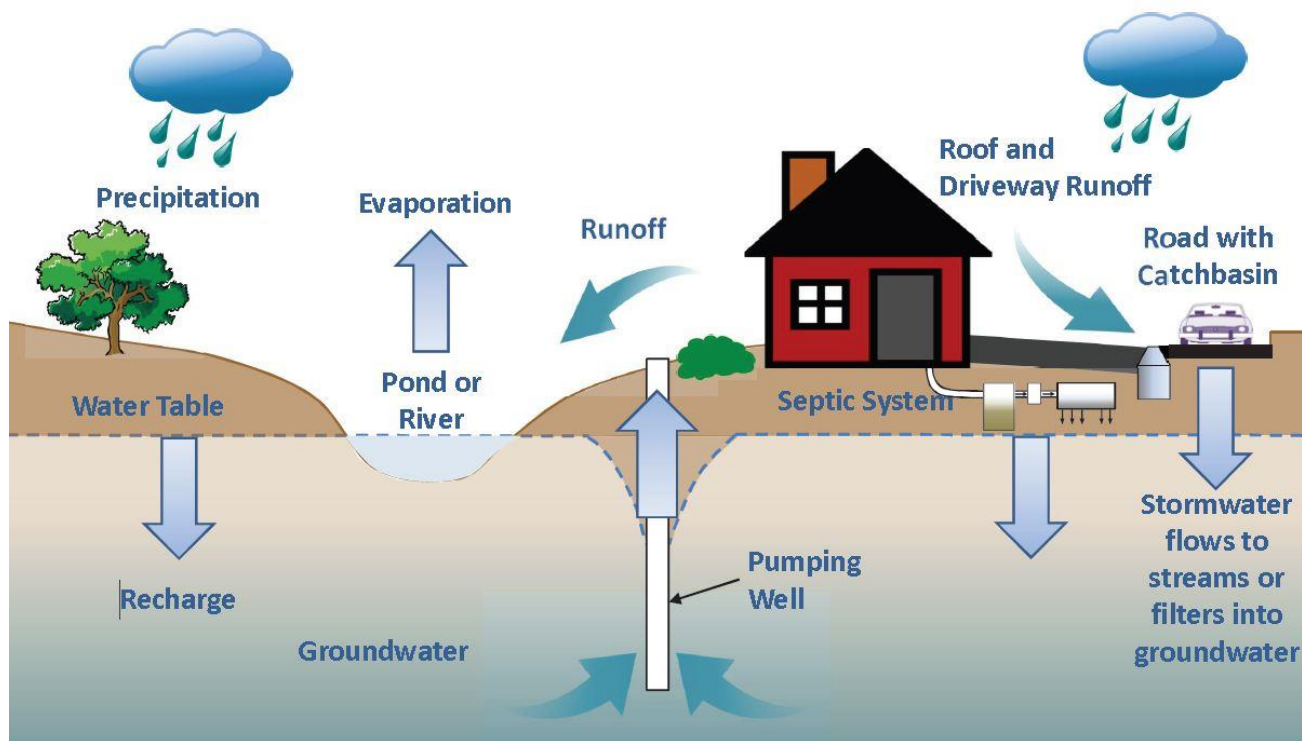
## IWRMP Presentation

Kirsten Ryan, Sr. Project Manager, Kleinfelder

Board of Selectmen's Meeting - March 18, 2019  
Medway, MA

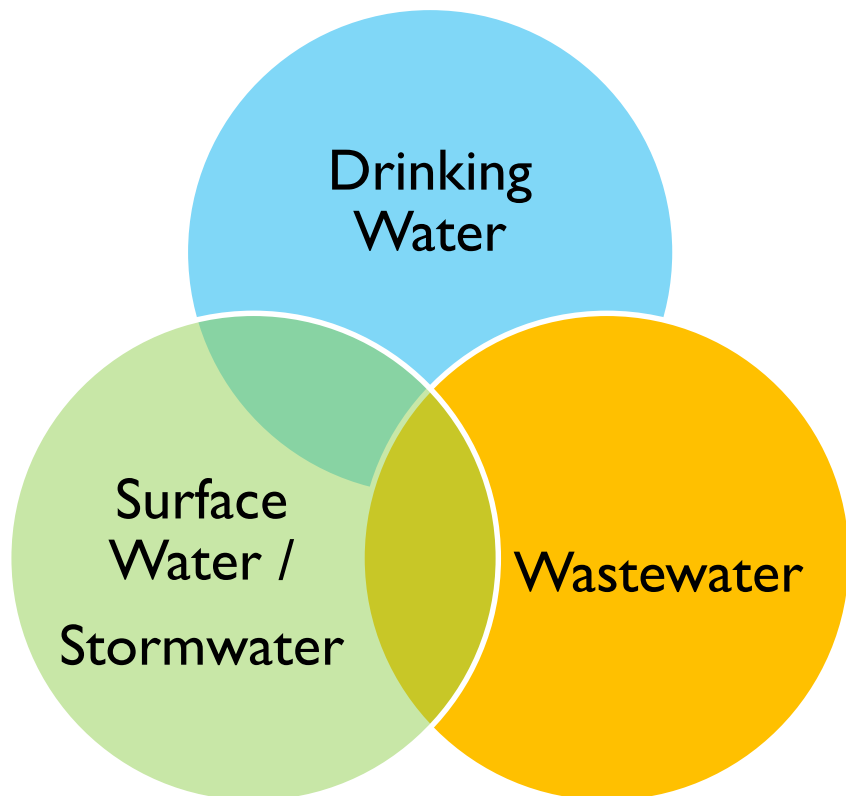


# Why Integrated Water Resources Planning?



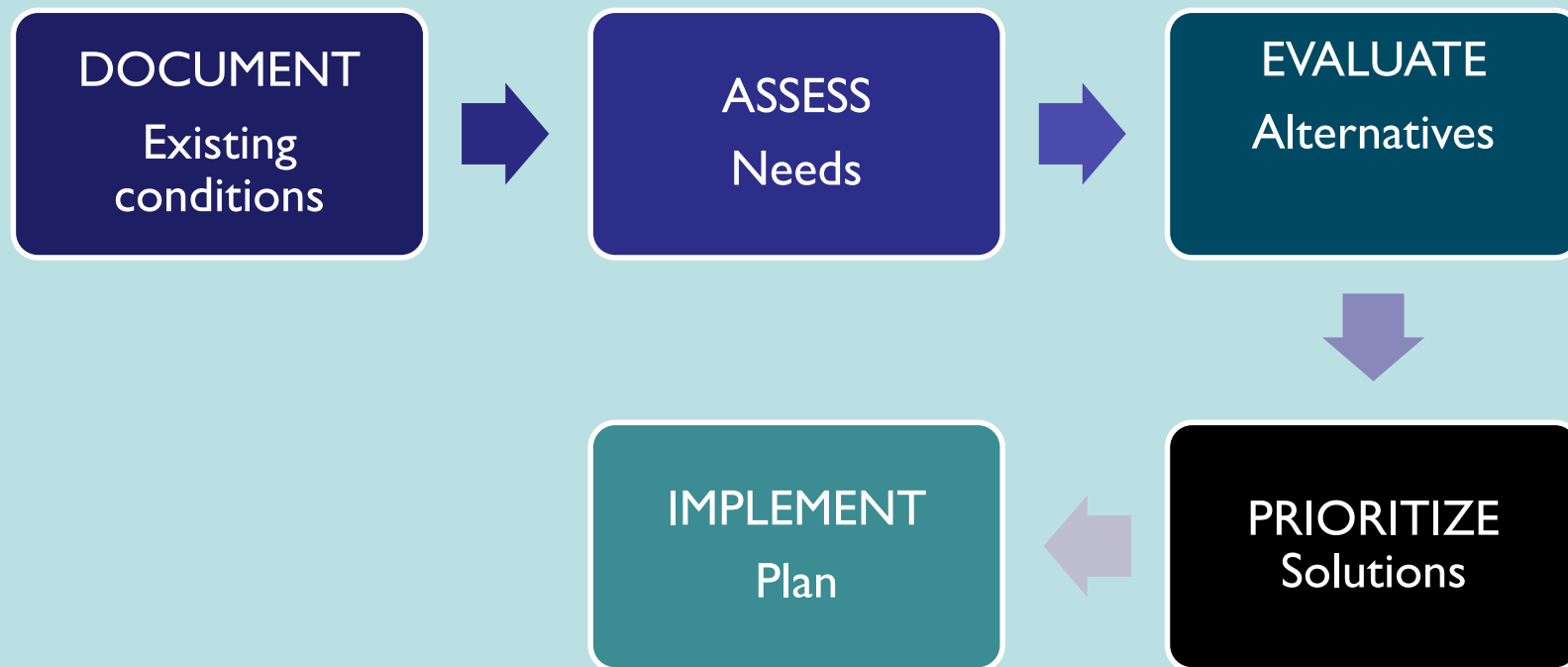
*Water resources and infrastructure are all interconnected !*

# What is Integrated Water Resources Planning?



- What Resources exist?
- What condition are they in?
- What requirements must be met?
- What are the needs & priorities of the community?
- How can they be balanced and sequenced?
- What is our short & long term plan?

# Integrated Water Resources Planning Process



***Public Involvement***

# IWRMP Task Force Participants

## Town of Medway -

- Board of Selectmen: Dennis Crowley, John Foresto
- DPS: David D'Amico, Barry Smith
- Planning / Econ Development: Bridget Graziano, Suzy Affleck-Childs, Stephanie Carlisle, Stephanie Mercandetti
- Town Admin. Office: Michael Boynton, Allison Potter
- Residents –Doug Downing, Chan Rogers
- Water / Sewer Commissioners: Ted Kenney, Barry Zide, Leo O'Rourke
- Planning Board: Andy Rodenhiser
- Board of Health: Beth Hallal

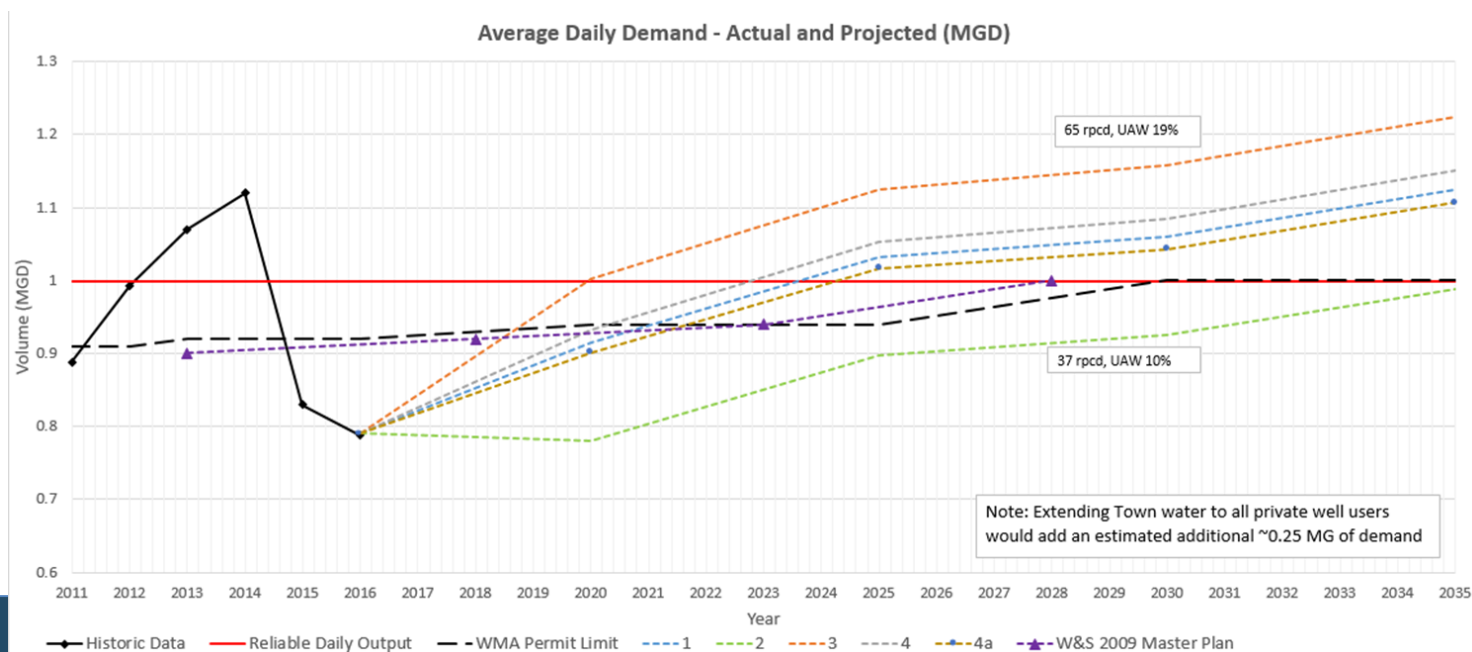
## Other Partner Participants -

- Charles River Pollution Control District – Liz Taglieri
- 495 Metrowest Partnership - Jessica Strunkin
- Rep. Jeff Roy's office - Ryan Arego

***THANK YOU !***

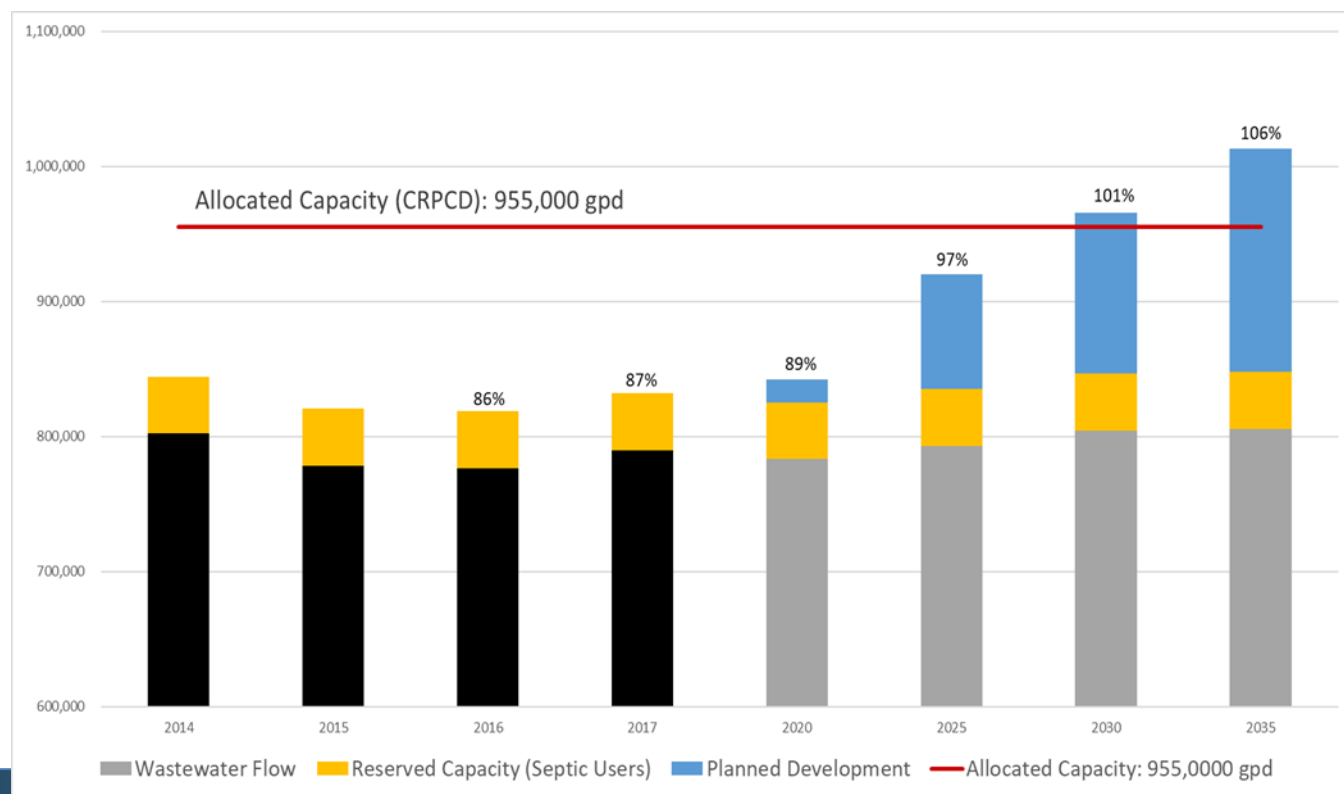
# Key Needs – Drinking Water

- Lack of redundancy & resiliency
- Increased demand; limited supply
- Water quality improvements
- Growth vs. Regulatory limits



## Key Needs – Wastewater

- Nearing allocated CRPCD capacity
- Ongoing maintenance needs





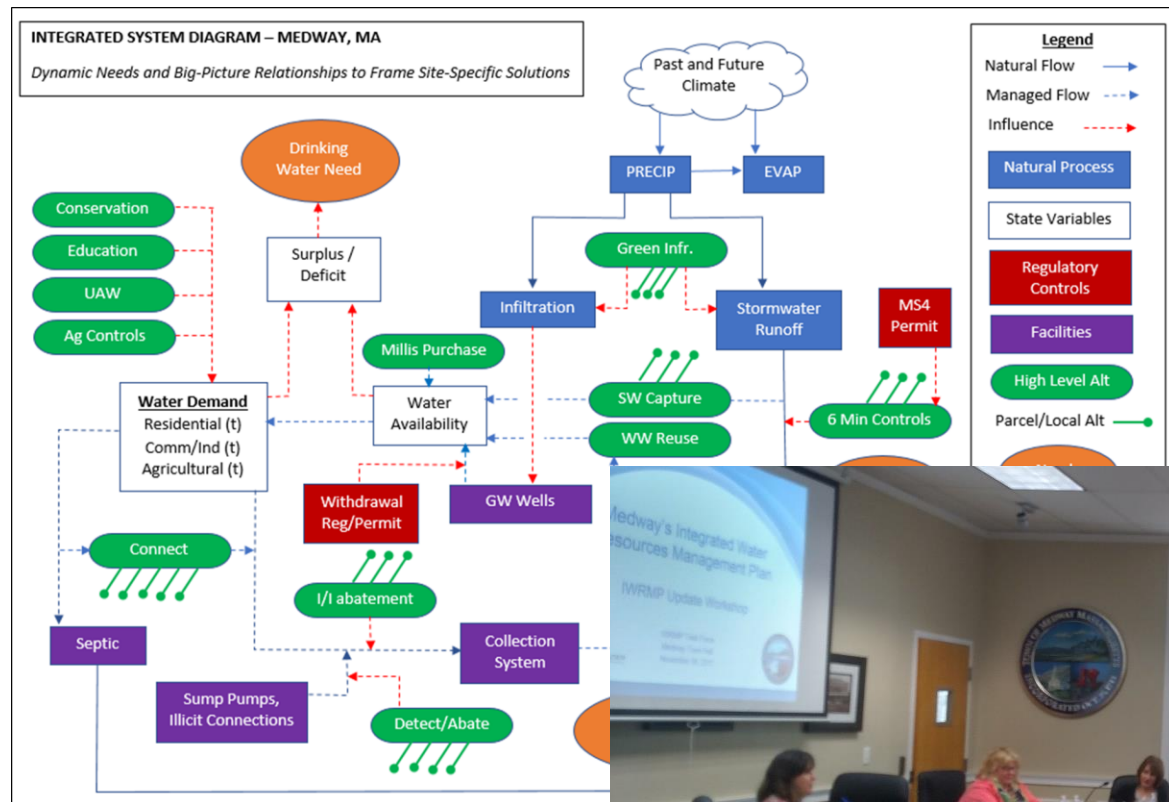
## Key Needs – Stormwater

- New regulatory requirements
- Localized flooding
- Ongoing maintenance needs





# Systems modeling + Task Force Input = Prioritized Solutions



# IWRMP Solutions

System	Ongoing or Recently Underway	Future
Drinking Water	<ul style="list-style-type: none"> <li>✓ Enhanced Leak Detection</li> <li>✓ New redundant well</li> <li>✓ Annual maintenance</li> <li>✓ Promote conservation</li> <li>✓ Update emergency plans</li> </ul>	<ul style="list-style-type: none"> <li>• Water treatment plant</li> <li>• Hydraulic model update</li> <li>• Water main replacements</li> <li>• Water tank painting</li> <li>• Water permit increase</li> </ul>
Wastewater	<ul style="list-style-type: none"> <li>✓ Purchase additional capacity</li> <li>✓ Improve system operations</li> <li>✓ Install permanent flow meters</li> </ul>	<ul style="list-style-type: none"> <li>• Identify &amp; remove inflow / infiltration</li> <li>• Septic system education and record keeping</li> </ul>
Stormwater	<ul style="list-style-type: none"> <li>✓ Continue MS4 Program compliance</li> <li>✓ Drainage system inspect / maintain</li> <li>✓ Promote public education</li> <li>✓ Drainage system improvements</li> </ul>	<ul style="list-style-type: none"> <li>• Manage impervious cover</li> <li>• Promote stormwater capture</li> <li>• Develop phosphorus control plan</li> <li>• Promote green infrastructure</li> </ul>

# More information on the website:

<https://www.townofmedway.org/dps-water-sewer/pages/integrated-water-resources-management-program>



The screenshot shows the Medway, Massachusetts website. The header includes the town seal, the name "Medway MASSACHUSETTS", a search bar, and social media icons. Navigation links for "Departments", "Boards & Committees", and "Agendas & Minutes" are present, along with a "Find it Fast" button. A left sidebar lists various services like "Approved Water and Sewer Contractors" and "Stormwater Management Program". The main content area is titled "Integrated Water Resources Management Program" and includes a breadcrumb trail: "Home » Departments » Department of Public Services » Water & Sewer". The text explains that the town is developing an IWRMP to manage drinking water, wastewater, and stormwater holistically. A diagram illustrates the water cycle with labels for precipitation, evaporation, runoff, groundwater, and stormwater management. The page concludes by stating that the plan will provide a prioritized list of solutions and that the town's engineering consultant, Kleinfelder, is evaluating the town's needs.

Medway  
MASSACHUSETTS

Search

Departments Boards & Committees Agendas & Minutes Find it Fast

Home » Departments » Department of Public Services » Water & Sewer

## Integrated Water Resources Management Program

The Town of Medway is in the process of developing and implementing an Integrated Water Resources Management Program (IWRMP). The purpose of the IWRMP is to look at all of Medway's water resources and infrastructure and determine how to manage drinking water, wastewater, and stormwater needs holistically. The outcome will be a Plan that addresses needs in a way that balances sustainable growth with environmental protection and affordability.



The diagram illustrates the water cycle and stormwater management. It shows precipitation falling on a landscape with a tree and a house. Arrows indicate evaporation from a pond or river, runoff from the roof and driveway, and runoff from the road with a catch basin. The diagram also shows groundwater being recharged and a pumping well extracting water from the groundwater. Stormwater is shown flowing into streams or filters into the groundwater.

The Plan will provide a prioritized list of solutions for Medway to begin implementing.

Having a completed IWRMP will help Medway to obtain grant and loan funding for making improvements.

The Medway Integrated Water Resources Management Plan (IWRMP) Task Force has been working with the Town's engineering consultant, Kleinfelder, evaluating Medway's needs and potential solutions.