

Town of Medway

Snow & Ice Management

Policy & Guide



February 10, 2016



Overview

- ✱ Provide safe streets and sidewalks during snow and ice events and emergencies
- ✱ Responsibility of the Dept. of Public Services (DPS)
- ✱ Only sand & salt for overnight freeze-ups, ice, and minor wet snow storms
- ✱ Plowing and potentially sanding/salting performed during more significant storms
- ✱ Emergency work performed anytime, day or night, 24 hours a day, 7 days a week





Operations Facts

- ✱ Over 100 miles of road and cul-de-sacs
- ✱ Town owned fleet of twelve vehicles
- ✱ Primary drivers and mechanics in DPS-Highway Division.
- ✱ Secondary support DPS-Water & Sewer Div.
- ✱ Contractors added for major storms
 - ✓ Up to 25 contractors available with up to 66 pieces of equipment when needed
- ✱ Approximately 3,600 tons of salt and sand used annually in de-icing operations





Response Objectives

- ✿ Medway endorses bare pavement policy
 - ✓ Use salt early to ensure easier removal of pack snow
 - ✓ Roads generally rut free and smooth
 - ✓ Major routes show pavement shortly after storm ends
 - ✓ Neighborhood roads with light traffic plowed yet may be snow covered for days
- ✿ Push back snow off of roadway to maintain road width and open catch basins
- ✿ Clear intersections for visibility as needed





Response Plan

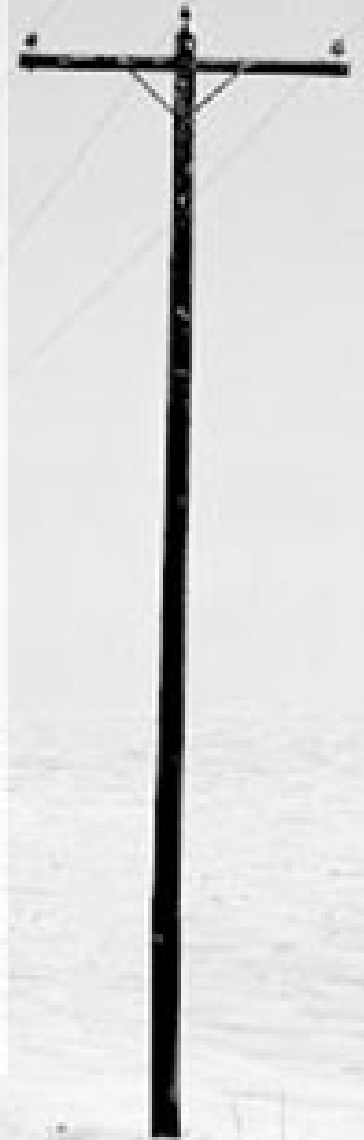
- ✿ Police Dept. in conjunction with Highway Superintendent evaluate road conditions
- ✿ Overnight freezing or light snow
 - ✓ Sand and salt only
 - ✓ Primary operators and mechanics in DPS-Highway
- ✿ Minor storms with minor traffic impacts
 - ✓ Generally 2 to 3 inches of snow requiring plowing
 - ✓ Secondary support from DPS-Water & Sewer
- ✿ All storms with serious commuting impacts
 - ✓ Contractors used to supplement Town forces





Completion Time

- ✱ Typically complete primary response 2 to 3 hours after most snow accumulation has stopped.
- ✱ **Completion time depends on many factors**
- ✱ Moisture content of the snow
 - ✓ Dry, fluffy snow = less salt, sand, and plowing
 - ✓ Heavy, wet snow = more salt, sand, and plowing
 - ✓ Wet snow and freezing road temperatures create dangerous driving conditions
- ✱ Duration
 - ✓ A four inch storm in 24 hours is more demanding than a six inch storm in 8 hours
 - ✓ Crew rest periods after 12 hours driving further slows response time





Completion Time (con't)

✿ Timing of the storm

- ✓ Late night/early morning storms provide extra time to clear roads
- ✓ Commuting hour storms result in packed snow making plowing more difficult
- ✓ December/January low sun lengthens melt times
- ✓ February/March higher sun shortens melt times

✿ Other factors increasing response time

- ✓ Freezing rain mix
- ✓ Wind and blowing snow
- ✓ Road surface temperature below freezing





Priorities

- ✿ Public safety and travel volumes determine priority
- ✿ Priority 1
 - ✓ Major roadways servicing largest volumes of commuters given top priority
 - ✓ Major intersections
 - ✓ School bus routes
 - ✓ Steep grades
- ✿ Priority 2
 - ✓ Secondary connector roads
- ✿ Priority 3
 - ✓ Neighborhood roads, side streets, cul-de-sacs will be done as time and conditions permit





Priorities (con't)

- ✱ Priority 4
 - ✓ Parking and access to municipal/school facilities
- ✱ Priority 5
 - ✓ Sidewalks
- ✱ No work done on private property or private ways

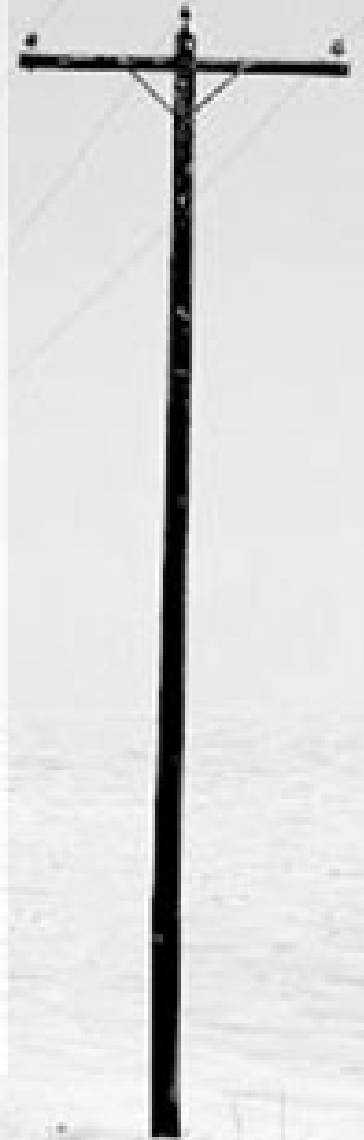




Sidewalks

✻ Sidewalks on roads listed below are primary and serviced by the Town as soon as practical.

- Barber Street
- Center Street
- Pond Street
- Broad Street
- Legion Avenue
- Sanford Street
- Cassidy Street
- North Street
- School Street
- Highland Street where sidewalks exist
- Oakland Street where sidewalks exist
- Village St. from Center St. to Oakland St.
- Holliston St. from Village St. to Ellis St.
- Lovering St. from Holliston St. to Lovering Heights
- Main St. from Highland St. to Oakland St.
- Maple St. from Lovering St. to Delmar Rd.
- Summer St. from Milford St. to Holliston Town Line





Sidewalks (con't)

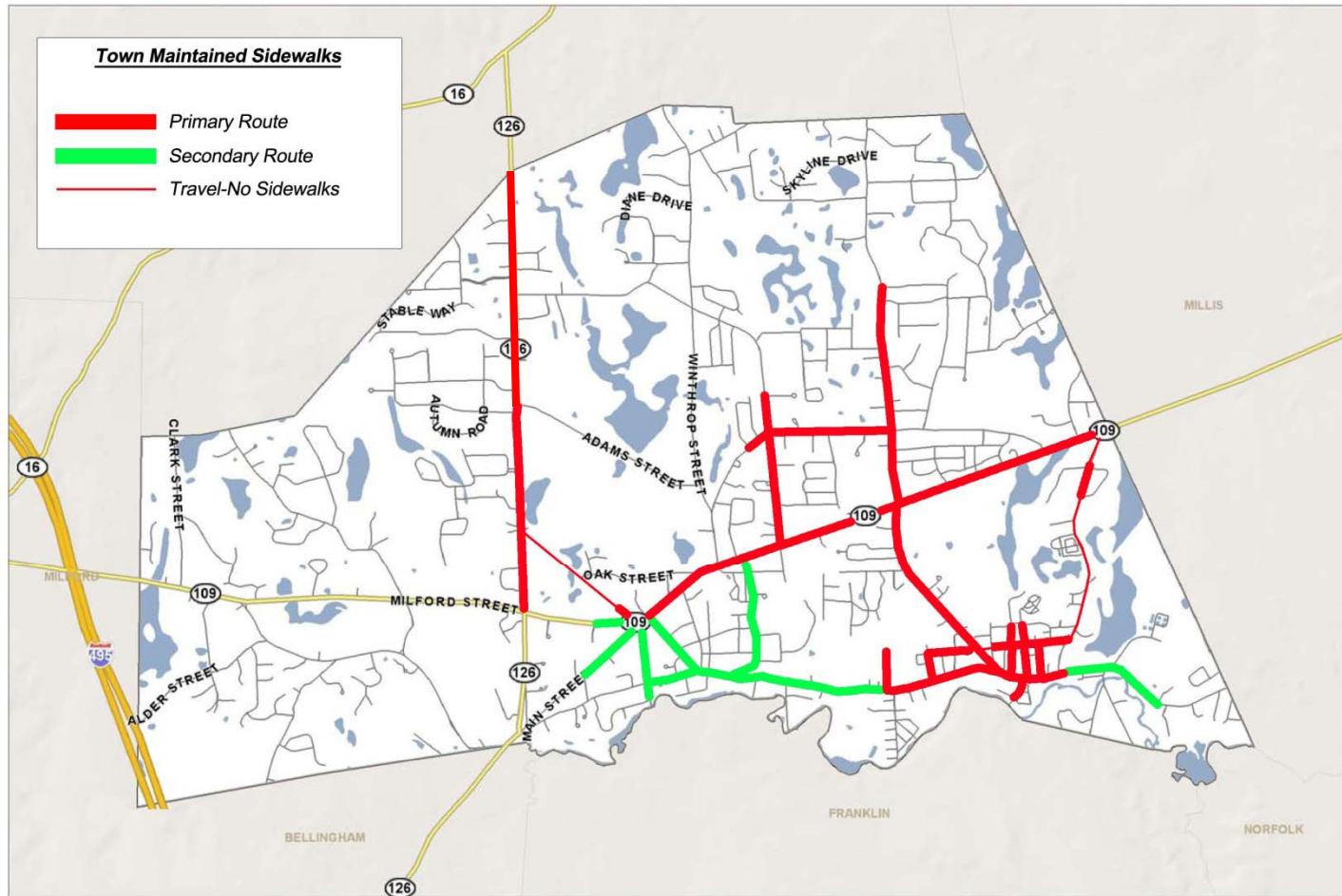
✻ In addition, the following routes may be done as time and equipment permit:

- Cottage Street
- High Street
- Main Street from Highland Street to Country Lane
- Milford Street from Main Street to Fales Street
- Village Street from Center Street to Franklin Street
- Village Street from Island Road to Oakland Street
- Franklin Street from Waterview Circle to Main Street





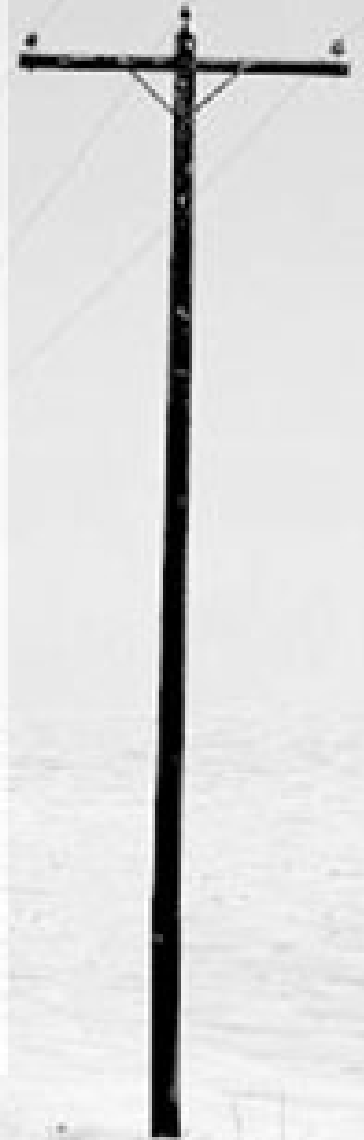
Sidewalks (con't)





Sidewalks (con't)

- ✱ Sidewalks are lowest priority
- ✱ May not be cleared for days following a storm
- ✱ DPS crews are not required to sand sidewalks, but may do so if time and funds permit
- ✱ Sidewalks on streets not listed are the responsibility of residents and businesses.
 - ✓ Clear areas in front of your property and beyond
 - ✓ Help neighbors who are not able
 - ✓ Take responsibility, take ownership, take pride
 - ✓ Make your neighborhood a better, safer place





Other Facilities Serviced

- Police Station
- All School Parking Areas
- Town Hall
- Library
- Fire Stations
- Parks
- Water Stations
- Senior Center



Service includes

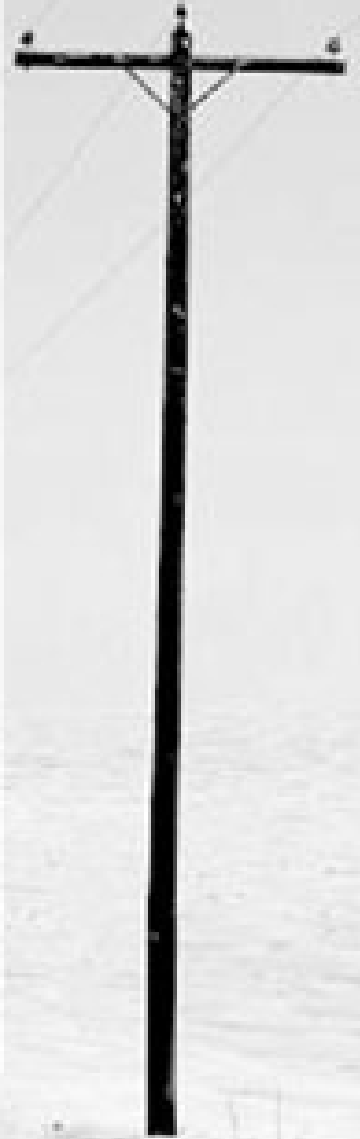
- ✓ sanding and plowing parking areas
- ✓ clearing and sanding walkways and entry ways at all facilities except schools who use own staff





Property Damage Liability

- ✿ Town is responsible for damage caused to private property on private property in full
- ✿ Town has a mailbox damage policy
 - ✓ Damage caused by municipal plowing operations
 - ✓ \$25 flat rate compensation regardless of actual cost
 - ✓ Only one claim accepted annually
 - ✓ Consider relocating a mailbox damaged regularly
- ✿ Town not liable for any fence, shrub, toy, or any other object left in the public way
 - ✓ Note: Public ways extend 5 to 10 feet beyond the road pavement
- ✿ Damaged lawns in the public way may be loamed and seeded by DPS if funds permit





We Need Your Help

- ✱ Clear catch basins to:
 - ✓ allow melting snow/rain to leave the road surface
 - ✓ avoid icing and flooding
- ✱ Clear fire hydrants
- ✱ Clear path to mailboxes
- ✱ Clear sidewalks in front of your property that the Town doesn't handle.
- ✱ Avoid parking in roads until plowing is over
 - ✓ Obey the parking bans and never park on a sidewalk





Need Your Help (con't)

❁ Clear driveway entrances

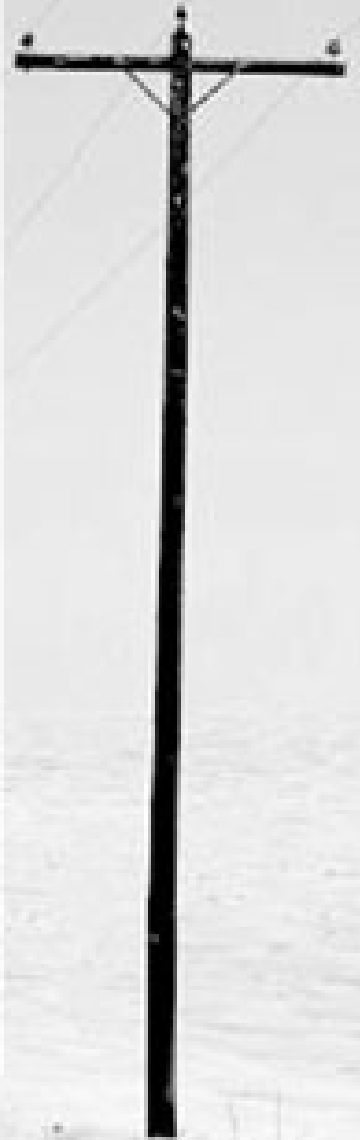
- ✓ Tips: Wait until plowing is over. Snow at the entrance stops snow from shedding off the plow blade and onto your property

Always clear to the right when facing the road to keep snow away from your property

❁ On trash days, keep bags and bins on your property.

- ✓ It's not pretty after they go through the sidewalk snowblower!
- ✓ Good idea for newspaper deliveries too.

❁ Put up markers near the edge of pavement to help us “see” the road





Be Considerate, Be Safe

- ✿ Don't stand in the plow's path
 - ✓ For safety, roads need to be cleared curb-to-curb
 - ✓ It slows down the process

- ✿ Do not throw or plow snow into or across roads
 - ✓ It is against the law
 - ✓ It is dangerous and you bear the liability
 - ✓ It makes your neighbors angry

- ✿ Slow down and expect the trip to take longer
 - ✓ Roads will not be bare, there will be ruts, pack snow, and ice during and after the storm on any road, anywhere.





- ✿ Contact the Dept. of Public Services
 - ✓ Normal office hours at 508-533-3275
 - ✓ Nights / weekends during a storm at 508-533-3221

- ✿ Storm watch and school closings
 - ✓ Local radio and TV stations
 - ✓ Medway Cable Channel 8

- ✿ Special notices, forms, and complete policy/guide
 - ✓ <http://www.townofmedway.org>

