



Town of Medway
DESIGN REVIEW COMMITTEE
155 Village Street
Medway MA 02053
508-533-3291
drc@townofmedway.org

April 8, 2021

Berry's Greenhouses
C/O Emily Berry
32 Summer St
Medway, MA 02053

RE: DRC Sign Design Review
Berry's Greenhouses
32 Summer St – Medway, MA

Dear Ms. Berry,

Thank you for submitting the proposed signage for Berry's Greenhouse to the Medway Design Review Committee (DRC) for review. The information was filed with the Town on March 23rd, 2021.

Pursuant to the Medway *Zoning Bylaw*, SECTION 7.2 Sign Regulations, this communication serves as the DRC's review letter regarding the proposed free-standing monument sign for Berry's Greenhouses at 32 Summer St, Medway. Please be advised that this letter does NOT constitute approval of a sign permit. You must still apply for and secure a sign permit from the Medway Building Department prior to sign installation. Do not install the sign before obtaining the required permit.

On Monday, April 5, 2021, the DRC met with you and Bryan Bonina of Signarama Walpole to review the proposed signage for the Berry's Greenhouses. You have proposed the following as represented on the sign design as submitted. (**See Attached**)

- Free-standing monument sign with a 2 sided panel (72" Wide x 24" High) with 12 SF per side for a total of 24 SF and a lower panel on the monument sign (6" High x 72" Wide) with 3 SF per side for a total of 6 SF. The total height of the monument sign is 72" and the total amount of sign surface area is 27 SF. No illumination is planned.

The DRC offers the following comments/recommendations regarding the proposed sign:

- The base of the sign must be landscaped 3 feet out in all directions. You stated that you will do so with seasonal flowers.
- The DRC suggests that the green color on the sign be such that it provides a stronger contrast against the white background for clear visibility for vehicles driving by. You stated that you were amenable to making this change.

Design Review Committee Members

Matthew Buckley, Member & Chair
Jessica Chabot, Member & Vice Chair

Dan Connolly, Member
Tom Gay, Planning and Economic Development
Board Representative

Alex Siekierski, Member
Rachel Walsh, Member

You indicated that you would consider these suggestions and move ahead. You are welcome to return to a future DRC meeting for further conversation and ideas regarding signage for Berry's Greenhouses. Please contact the Medway Planning and Economic Development office at 508-533-3291 if you would like to schedule another appointment with the DRC.

The DRC's goal is to enhance the identification value of business signs in Medway. We seek to help Medway businesses and organizations develop their signs as long-term investments, designed for sound readability with appropriate graphics and materials in a manner that suits budgetary constraints and enhances our community's appearance and appeal.

Thank you for your time. We wish Berry's Greenhouses continued success in Medway. Welcome back!

Sincerely,

A handwritten signature in black ink, appearing to read "Matthew J. Buckley". The signature is fluid and cursive, with the first name "Matthew" and last name "Buckley" clearly distinguishable.

Matthew J. Buckley
Chairman

cc: Jack Mee, Medway Building Commissioner
Rindo Barese, Medway Building Department
Ericka Robertson, Medway Building Department
Kelly O'Brien, Medway Building Department
Bryan Bonina, Signarama Walpole

QTY 1 Double Sided Street Sign



Post and Panel sign with pvc sign panels and high performance vinyl applied to sign faces. Pressure Treated 4x4 posts sleeved with PVC sleeves cemented into the ground.

8' set back from street
6' overall height

WALPOLE
Signarama
The way to grow your business.

458 High Plain St. Intersection Rts 1 & 27
Walpole, MA 02081
508-660-1231
signarama-walpole.com
sales@signarama-walpole.com



- Proof colors may vary from monitors & actual sign materials.
- A pdf proof is not a correct representation of printer output color.
- Resolution & Color from files provided by customer are the customers responsibility.
- Hard Proofs can be printed to ensure color satisfaction at a cost to be determined.
- Additional design charges may apply if customer does not proceed with all or part of project

PROOF 1	PROOF 2	PROOF 3	PROOF 4	PROOF 5
FREE	FREE	\$20.00	\$25.00	\$30.00

This proof is for conceptual use - actual sizes / colors / proportions may slightly vary.

**CLIENT
APPROVAL**

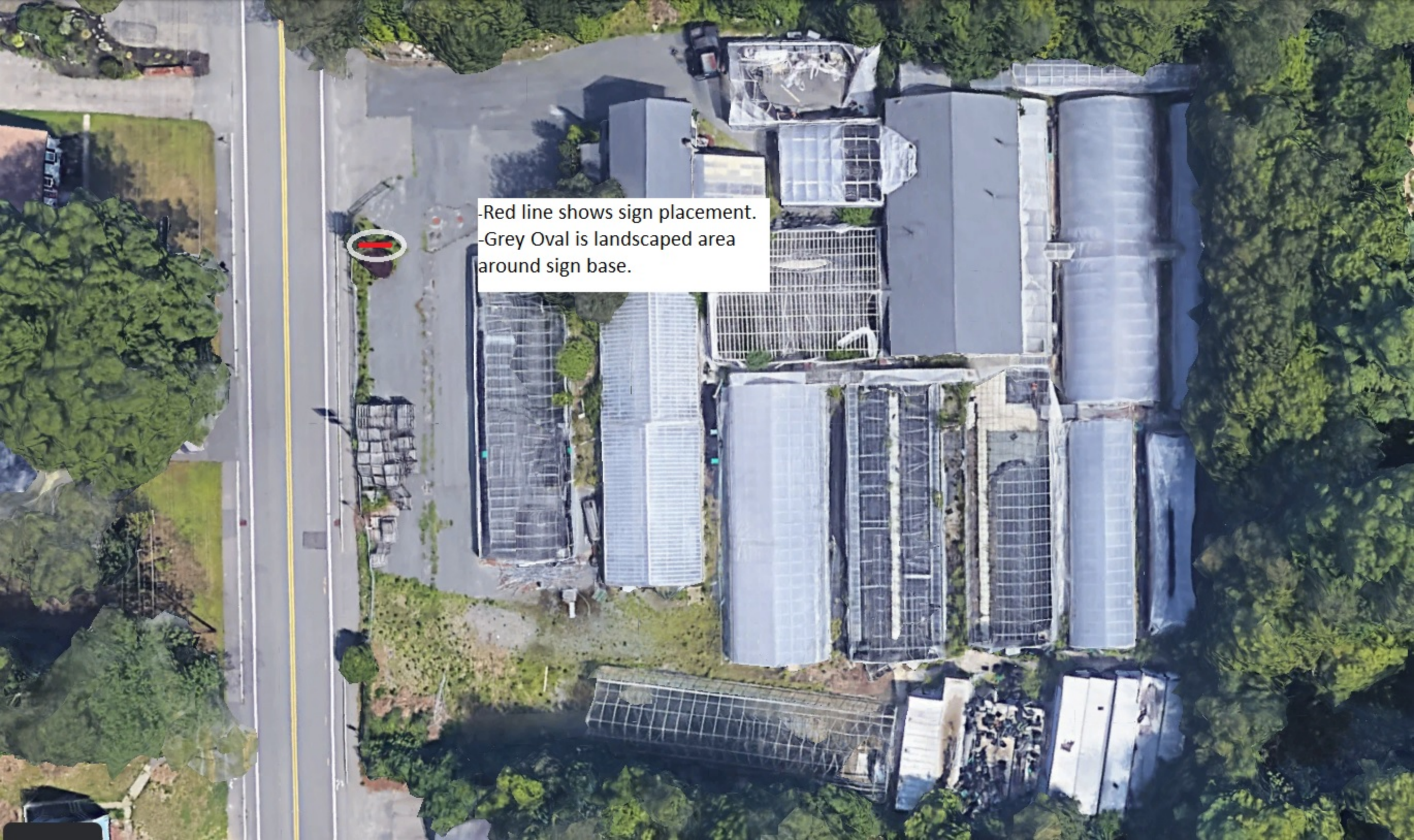
- Client signature ensures all spellings & specifications for signage are correct.
- All errors are your responsibility once final approval is received.
- Additional charges apply if you wish to make changes once artwork has been printed, fabricated and/or installed.

Customer: Berrys Greenhouses Inc.

Date: _____

Approved By: _____

THIS ORIGINAL DESIGN AND ALL INFORMATION CONTAINED HERE IN ARE THE PROPERTY OF SIGN A RAMA, AND SUBJECT TO RETURN, ANY UNAUTHORIZED USE IN FORBIDDEN.



-Red line shows sign placement.
-Grey Oval is landscaped area
around sign base.