

Help Protect Your Watershed

The Town of Medway is located within the Charles River Watershed. This means that all surface water and groundwater in Town, including that from your property, flows to the Charles River. Therefore, how you care for your property can affect both water quality and water supply.



What are your Local Water Resources?

Surface Water

The Charles River forms two thirds of Medway's southern border with Franklin. Like Choate Pond, many of Medway's surface waters provide important wildlife habitat and popular recreational areas for residents. Wetland areas throughout Town also provide essential flood protection.

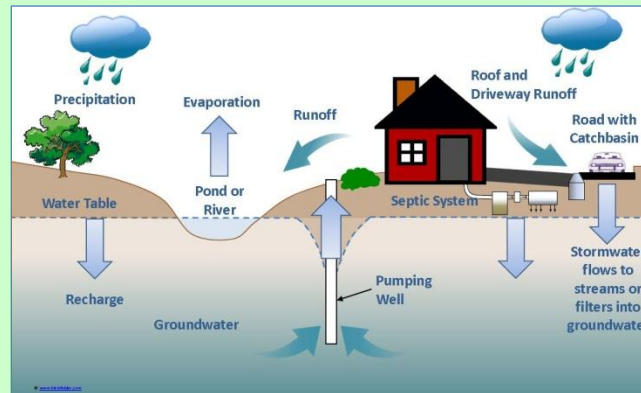
Groundwater

Medway residents receive their water supply from ground water sources. The Town's four supply wells draw their water from the underground sand and gravel aquifer of the Charles River basin.

How Are Our Water Resources Connected?

With a little help from the water cycle, our actions have a direct impact on surface waters and ground water sources.

- Excess chemicals applied to lawns, oil and debris found on paved surfaces, and even animal waste become sources of pollution when they are carried to receiving waters or infiltrated into the ground by stormwater.
- Extra pumping of groundwater in the summer to supply water for lawns and gardens lowers the level of the water table and can dry up streams.
- A failing septic system can release bacteria and nutrients into the water cycle, contaminating nearby surface waters and ground water.
- Stormwater and ground water can enter aging sanitary sewer infrastructure, overloading it and potentially resulting in overflows to the environment.
- Aging or undersized drainage pipes can fail during storm events and cause local flooding.



How Can You Help?

Get Involved

Participate in cleanup activities in your neighborhood, the annual Medway Clean Sweep & the annual Medway Pride Day.

Watch for Notices about IWRMP upcoming meetings.

Steps You Can Take to Help Protect Medway's Water Resources

- Limit the use of pesticides and fertilizers – use natural or organic lawn care methods
- Compost your yard waste
- Have your septic tank pumped and system inspected regularly
- Practice Water Conservation
- Never dump anything down storm drains or in streams & take unwanted household chemicals to hazardous-waste collection centers
- Direct downspouts away from paved surfaces
- Pick up after your pet
- Use low-phosphate or phosphate-free detergents



What are TMDLs and do They Impact Medway?

Under the Clean Water Act (CWA) states are required to identify impaired waters. These are waters where existing pollution controls are not enough to meet or maintain water quality standards. Once impaired waters are identified, each state must develop a "Total Maximum Daily Load" (TMDL) for the types of discharges polluting the impaired waters. A TMDL determines how much of a pollutant can be put into a body of water before it has harmful effects.

Two TMDLs have been finalized for the Charles River Basin; these include the Final TMDL for Nutrients in the Upper/Middle Charles River and the Final Pathogen TMDL for the Charles River Watershed. Both apply to the area of Charles River located in Medway.

In development of its Integrated Water Resources Management Program, as well as through updates to its Stormwater Management Program, Medway is working towards complying with TMDL requirements and reducing the Town's contribution of pollutants to the Charles River.

In order to view more detailed information about TMDLs or to view the TMDLs developed for the Charles River Watershed please visit:

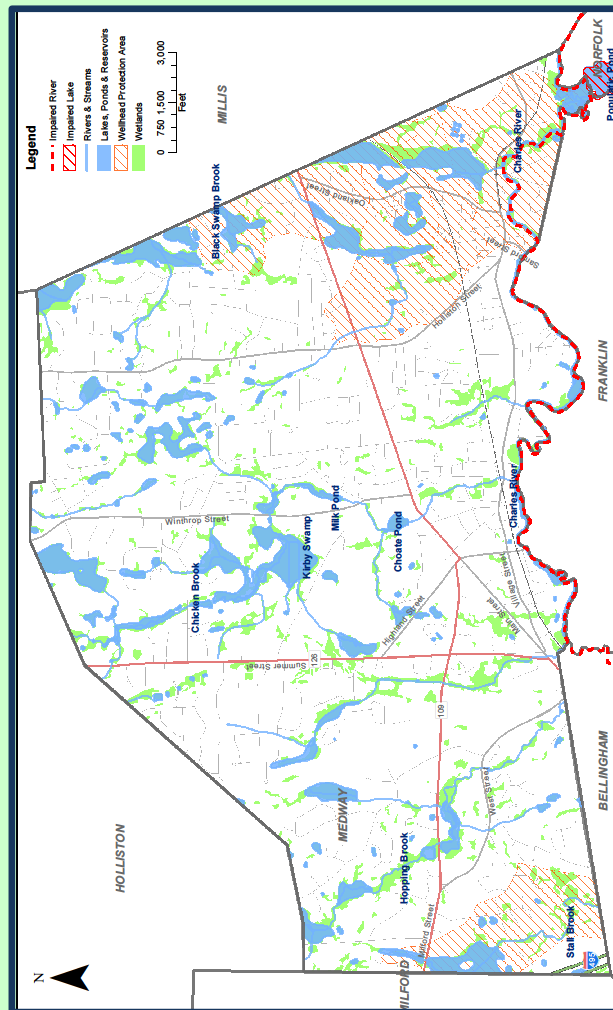
<http://www.mass.gov/dep/water/resources/tmdls.htm> .



For more details, regarding the Town's IWRMP please contact the Department of Public Services.

Contact Information

DPS Main Office
Town Hall
155 Village Street, 2nd Floor
Medway, MA 02053
508-533-3275



Town of Medway Integrated Water Resources Management Program (IWRMP)



Photo by Mark Wilcox

The purpose of the IWRMP is to look at all of Medway's water resources holistically and determine how to manage Medway's drinking water, wastewater, stormwater and surface water needs in a balanced way that protects the environment and allows for sustainable growth.



Town Of Medway, MA
Department of Public Services
Environmental Services

www.townofmedway.org

"A Green Community"